

## DAISSY-4X1-WW

~80° wide beam. 4X1 variant.

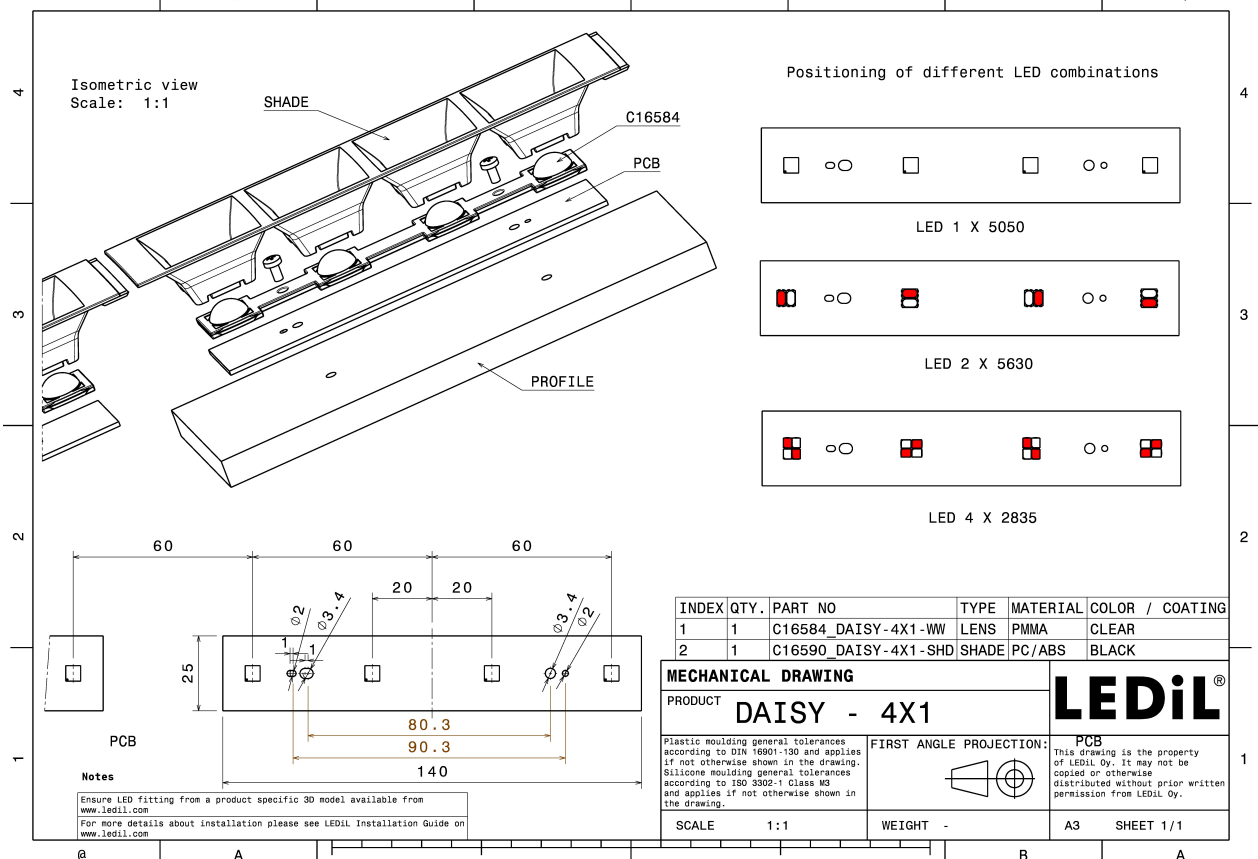
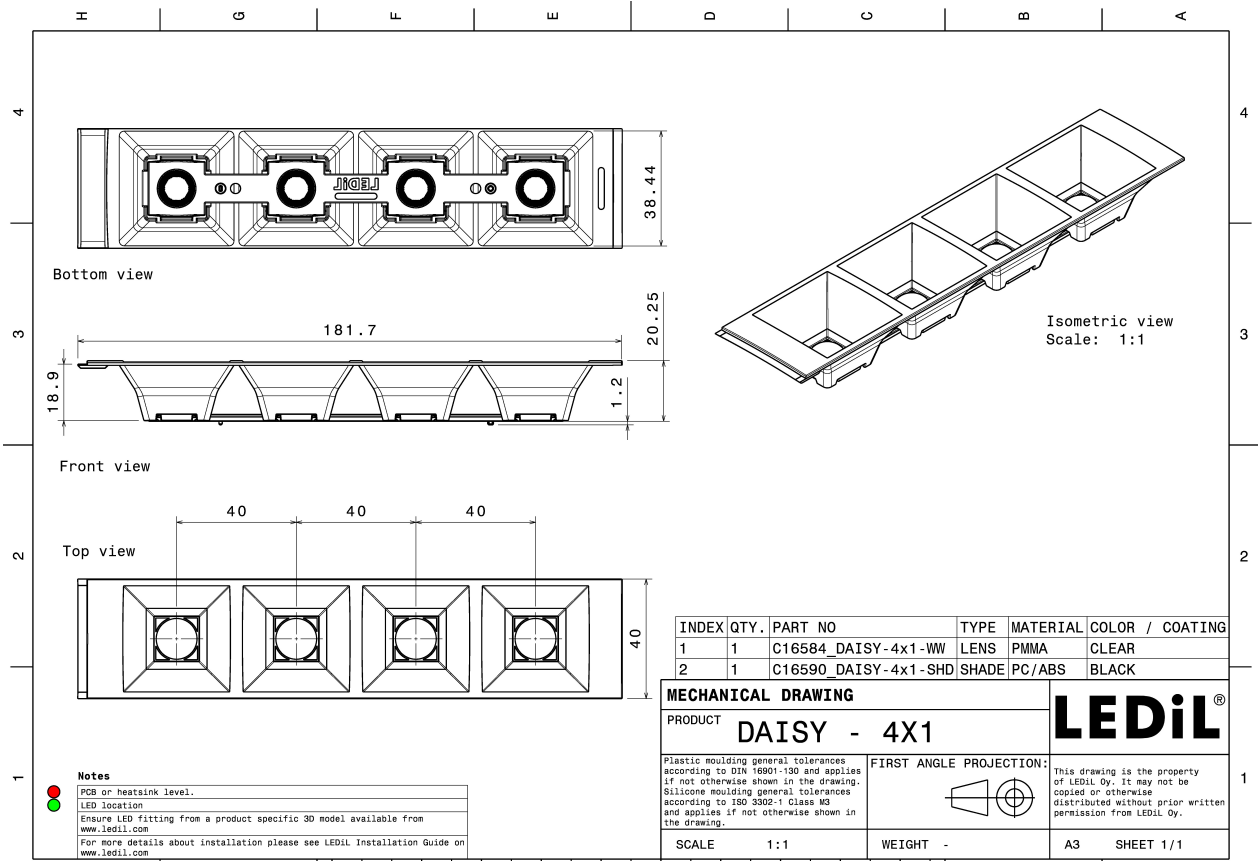
### TECHNICAL SPECIFICATIONS:

Dimensions	182.0 x 40.0 mm
Height	20.2 mm
Fastening	pin, screw, clips
Colour	black
Box size	
Box weight	0 kg
Quantity in Box	504 pcs
ROHS compliant	yes ⓘ



### MATERIAL SPECIFICATIONS:

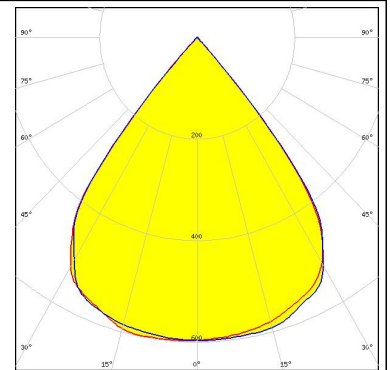
Component	Type	Material	Colour
DAISSY-4X1-WW	Linear lens	PMMA	clear
DAISSY-4X1-SHD	Shade	PC-ABS	black



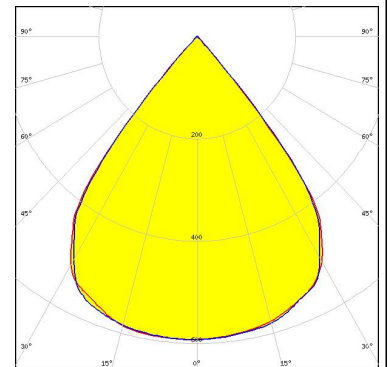
### PHOTOMETRIC DATA (MEASURED):



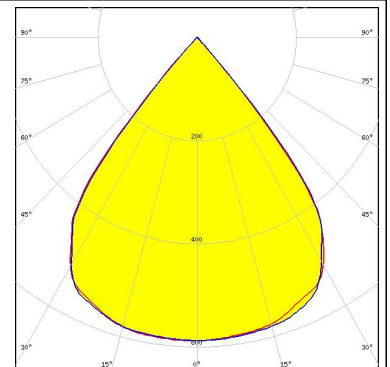
LED J Series 2835  
 FWHM 77.0°  
 Efficiency 86 %  
 Peak intensity 0.600 cd/lm  
 LEDs/each optic 2  
 Light colour White  
 Required components:



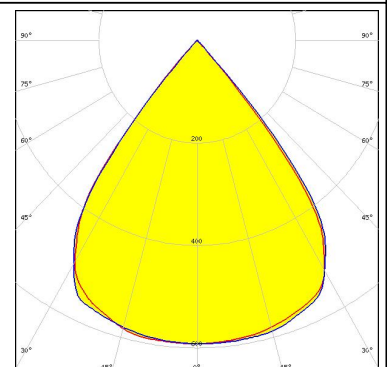
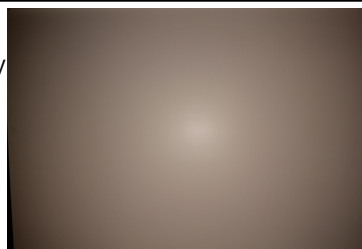
LED LG 3528  
 FWHM 77.0°  
 Efficiency 86 %  
 Peak intensity 0.600 cd/lm  
 LEDs/each optic 2  
 Light colour White  
 Required components:



LED LUXEON 2835 Line  
 FWHM 78.0°  
 Efficiency 87 %  
 Peak intensity 0.600 cd/lm  
 LEDs/each optic 2  
 Light colour White  
 Required components:



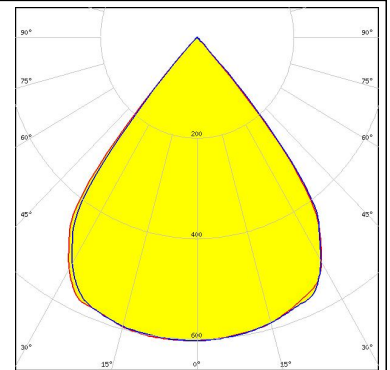
LED LinLED 156x28mm 2x200lm 827-865 2x2C 12V  
 FWHM 77.0°  
 Efficiency 85 %  
 Peak intensity 0.600 cd/lm  
 LEDs/each optic 1  
 Light colour White  
 Required components:



### PHOTOMETRIC DATA (MEASURED):

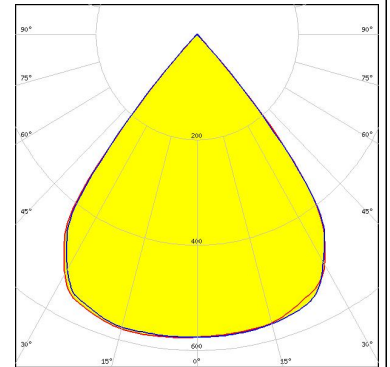
#### MST Your solutions

LED LinLED 156x28mm 400lm 8x0 2C 12V Opt G1  
 FWHM 77.0°  
 Efficiency 87 %  
 Peak intensity 0.600 cd/lm  
 LEDs/each optic 1  
 Light colour White  
 Required components:



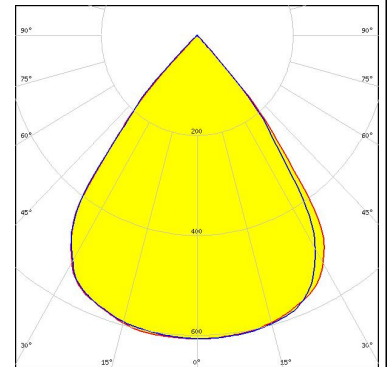
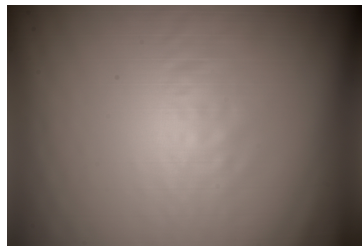
#### SAMSUNG

LED LM28xB Series  
 FWHM 78.0°  
 Efficiency 84 %  
 Peak intensity 0.580 cd/lm  
 LEDs/each optic 2  
 Light colour White  
 Required components:



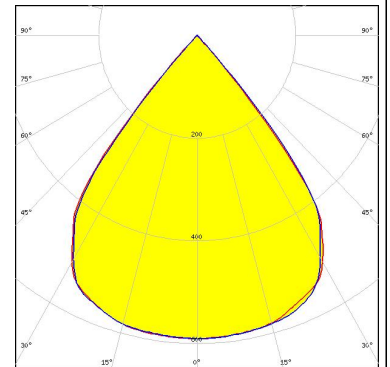
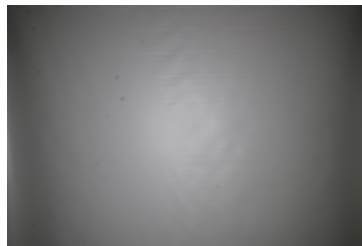
#### SAMSUNG

LED LM28xB Series  
 FWHM 75.0°  
 Efficiency 84 %  
 Peak intensity 0.610 cd/lm  
 LEDs/each optic 4  
 Light colour White  
 Required components:



SEOUL SEMICONDUCTOR

LED SEOUL DC 3528  
 FWHM 78.0°  
 Efficiency 87 %  
 Peak intensity 0.590 cd/lm  
 LEDs/each optic 2  
 Light colour White  
 Required components:



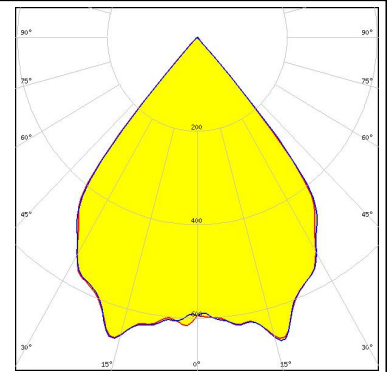
### PHOTOMETRIC DATA (MEASURED):



### PHOTOMETRIC DATA (SIMULATED):

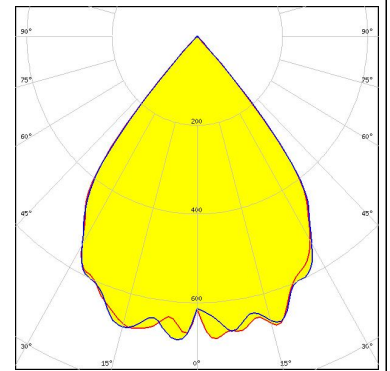
#### LUMILEDS

LED LUXEON 3535L  
FWHM 76.0°  
Efficiency 90 %  
Peak intensity 0.670 cd/lm  
LEDs/each optic 1  
Light colour White  
Required components:



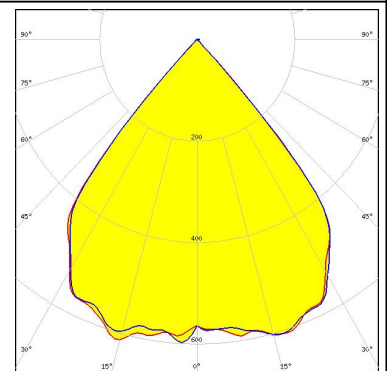
#### LUMILEDS

LED LUXEON 5050  
FWHM 76.0°  
Efficiency 90 %  
Peak intensity 0.700 cd/lm  
LEDs/each optic 1  
Light colour White  
Required components:



#### SAMSUNG

LED LH351B  
FWHM 79.0°  
Efficiency 90 %  
Peak intensity 0.610 cd/lm  
LEDs/each optic 1  
Light colour White  
Required components:



### GENERAL INFORMATION:

NOTE: The typical beam angle will be changed by different color, chip size and chip position tolerance. The typical total beam angle is the full angle measured where the luminous intensity is half of the peak value.

### MATERIALS:

As part of our continuous research and improvement processes, and to ensure the best possible quality and availability of our products, LEDiL reserves the right to change material grades without notice.

### PRODUCT DATA USER AGREEMENT AND DISCLAIMER:

The measured data in the provided downloadable LEDiL Product Datasheets and Mechanical 2D-Drawings is rounded and provided as reference for planning. LEDiL Oy's optical specifications have been verified by conducting performance testing of the products in accordance with the company's quality system. The reported data are averaged results of multiple measurements with typical variation. LEDiL Oy reserves the right to without prior notification make changes and improvements to its products.

LEDiL Oy assumes neither warranty, nor guarantee nor any other liability of any kind for the contents and correctness of the provided data. The provided data has been generated with highest diligence but the provided data may in reality not represent the complete possible variation range of all intrinsic parameters. Therefore, in certain cases a deviation from the provided data could occur.

LEDiL Oy reserves the right to undertake technical changes of its products without further notification which could lead to changes in the provided data. LEDiL Oy assumes no liability of any kind for the possible deviation from any provided data or any other damage resulting from the usage of the provided data.

The user agrees to this disclaimer and user agreement with the download or usage of the provided files.

#### LEDiL Oy

Joensuunkatu 13  
FI-24240 SALO  
Finland

#### LEDiL Inc.

228 West Page Street  
Suite D  
Sycamore IL 60178  
USA

#### Local sales and technical support

[www.ledil.com/  
where\\_to\\_buy](http://www.ledil.com/where_to_buy)

#### Shipping locations

Salo, Finland  
Hong Kong, China

#### Distribution Partners

[www.ledil.com/  
where\\_to\\_buy](http://www.ledil.com/where_to_buy)