

## DETAILS

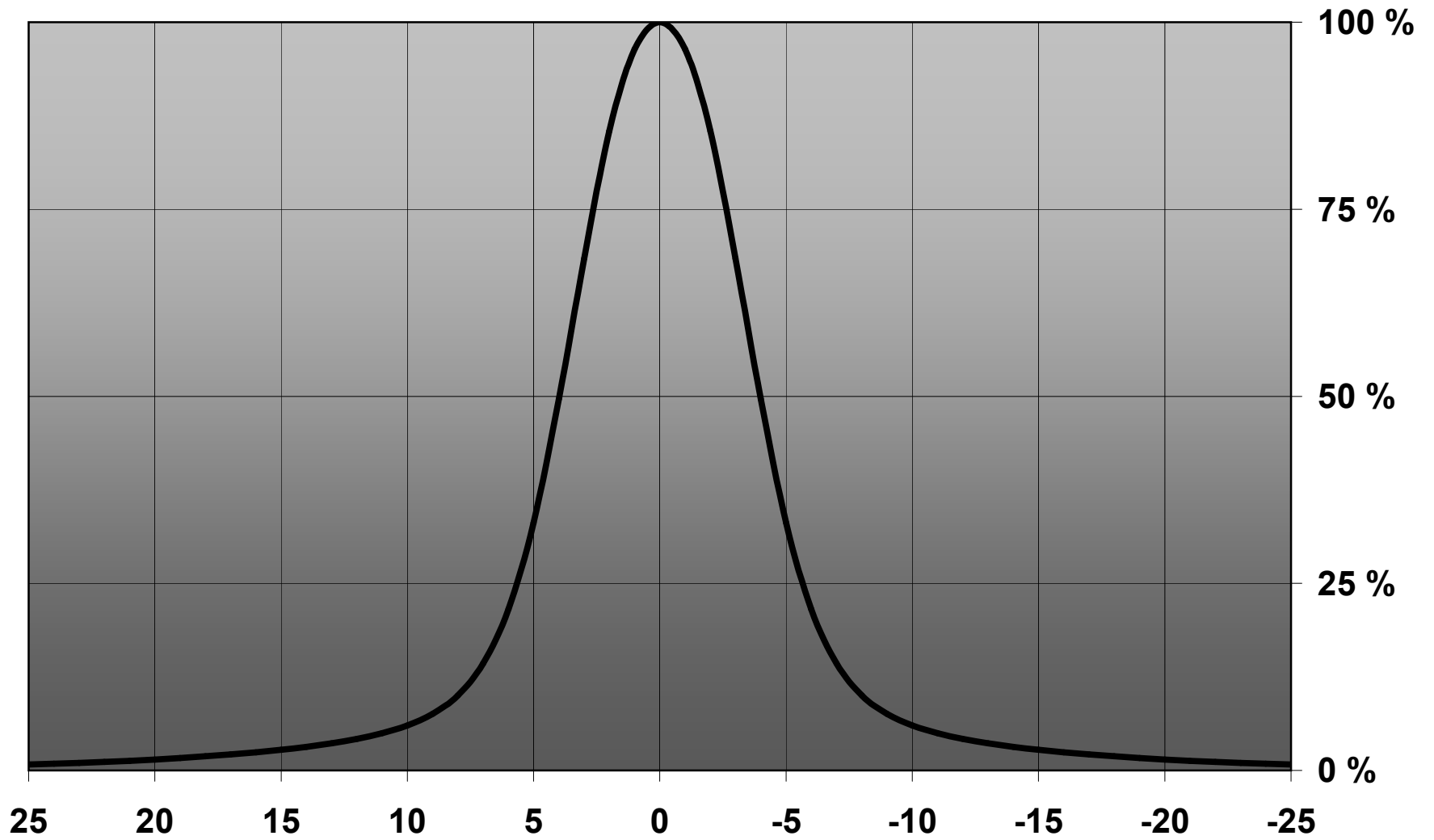
<b>Ordering Number</b>	CA11264_HEIDI-D
<b>Family</b>	Heidi
<b>Type</b>	Assembly
<b>Color</b>	clear
<b>Diameter</b>	21.6 mm
<b>Height</b>	11.7 mm
<b>Style</b>	round
<b>Optic Material</b>	PMMA
<b>Holder Material</b>	
<b>Fastening</b>	pin, tape
<b>Status</b>	ready
<b>ROHS Compliant</b>	Yes
<b>Date Updated</b>	14/10/2013



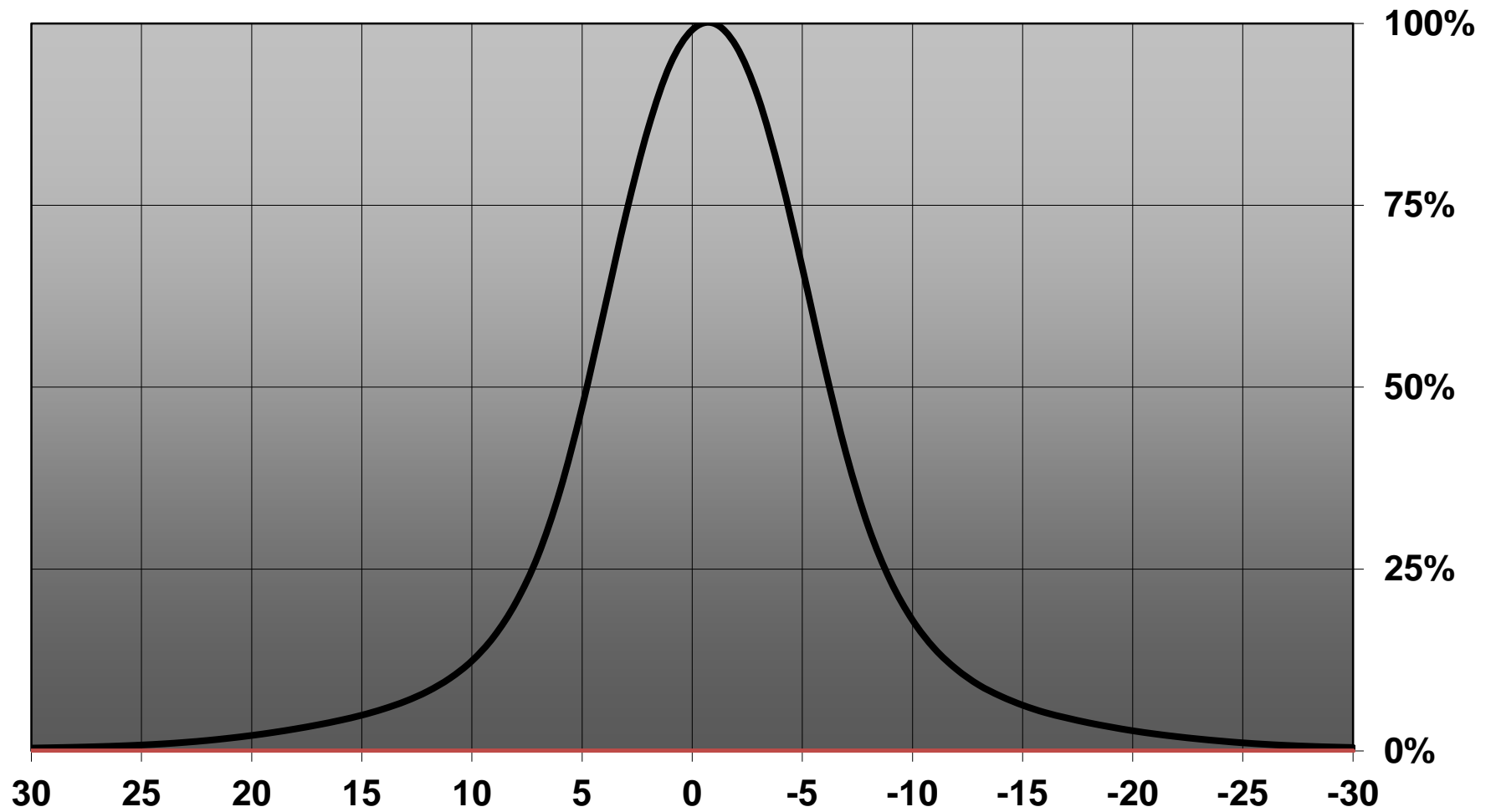
## OPTICAL PROPERTIES

LED	Viewing Angle	Light Beam	Efficiency	cd/lm
Double Dome (GM2BB)	(simulated)		-	-
Z5M1	(simulated) 10		(simulated) 90 %	(simulated) 17.000
Oslon SSL 80	7 degrees		89 %	19.300
Z5	8 degrees		87 %	22.300
XP-E	9 degrees		93 %	22.000

# Relative Intensity of CA11264\_Heidi-D-RE



**Relative intensity of CA11264\_HEIDI-D-(XPG2)**



D

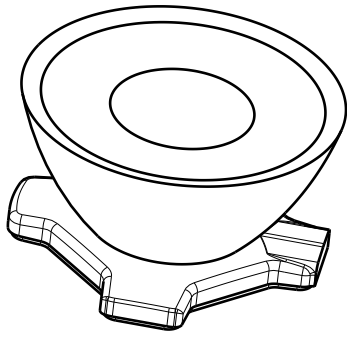
C

B

A

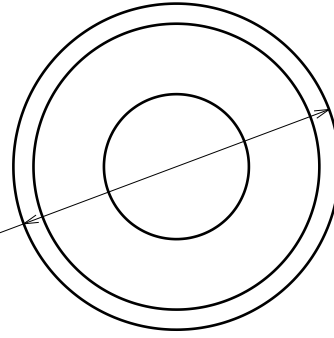
4

4



Isometric view

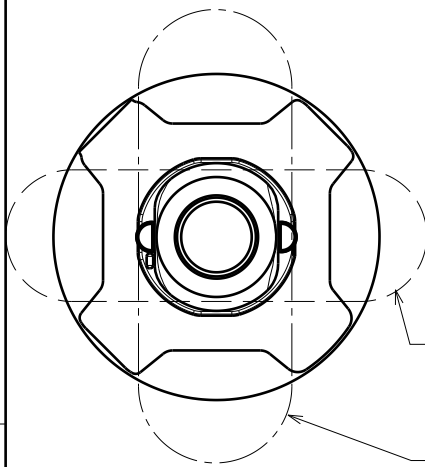
Ø 21.6



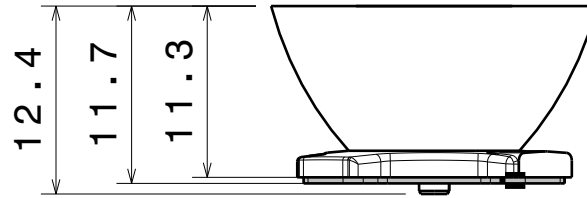
Top view

3

3



Bottom view  
OVAL BEAM direction



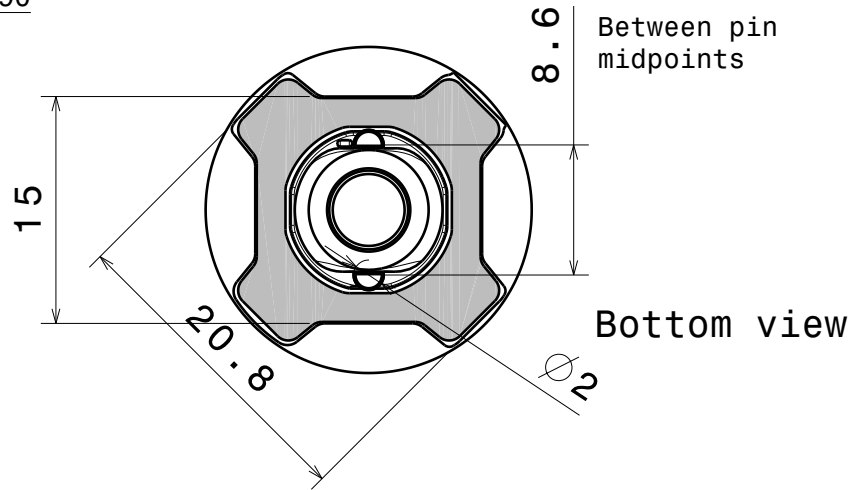
Front view

Heidi-0

Heidi-0-90

2

2



Bottom view

8.6  
Between pin midpoints

Material:  
Lens PMMA  
Tape PU Foam

This drawing is our property.  
It can't be reproduced  
or communicated without  
our written agreement.



Ledil Oy  
Salorankatu 10  
FIN-24100 SALO  
Finland

DRAWING TITLE

Datasheet Heidi-Series Assy

1

1

DRAWN BY  
ah

DATE  
1.2.2012

CHECKED BY

DATE

SIZE  
A4

DRAWING NUMBER

REV  
2

DESIGNED BY

DATE

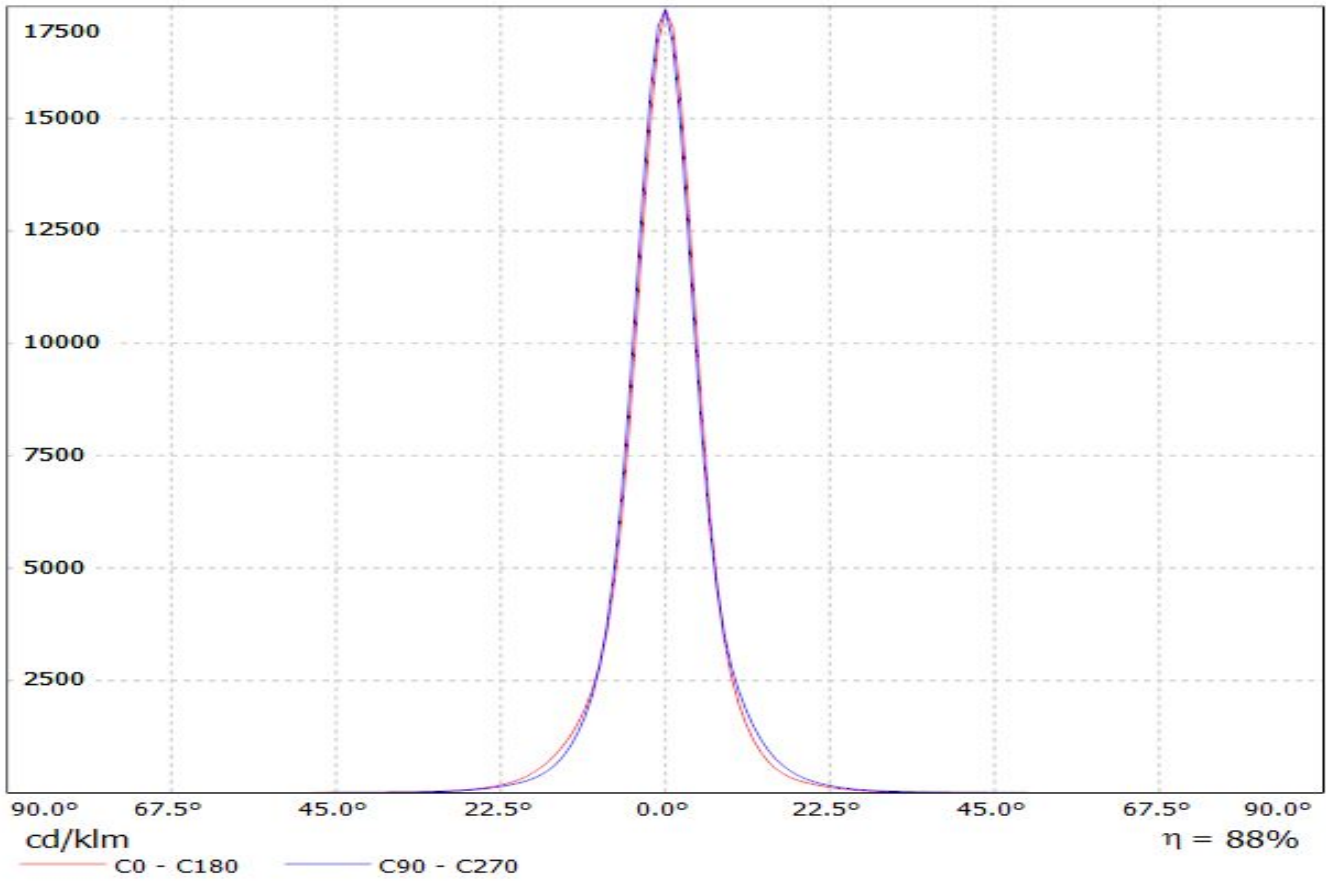
SCALE 2:1 WEIGHT (g)

SHEET 1/1

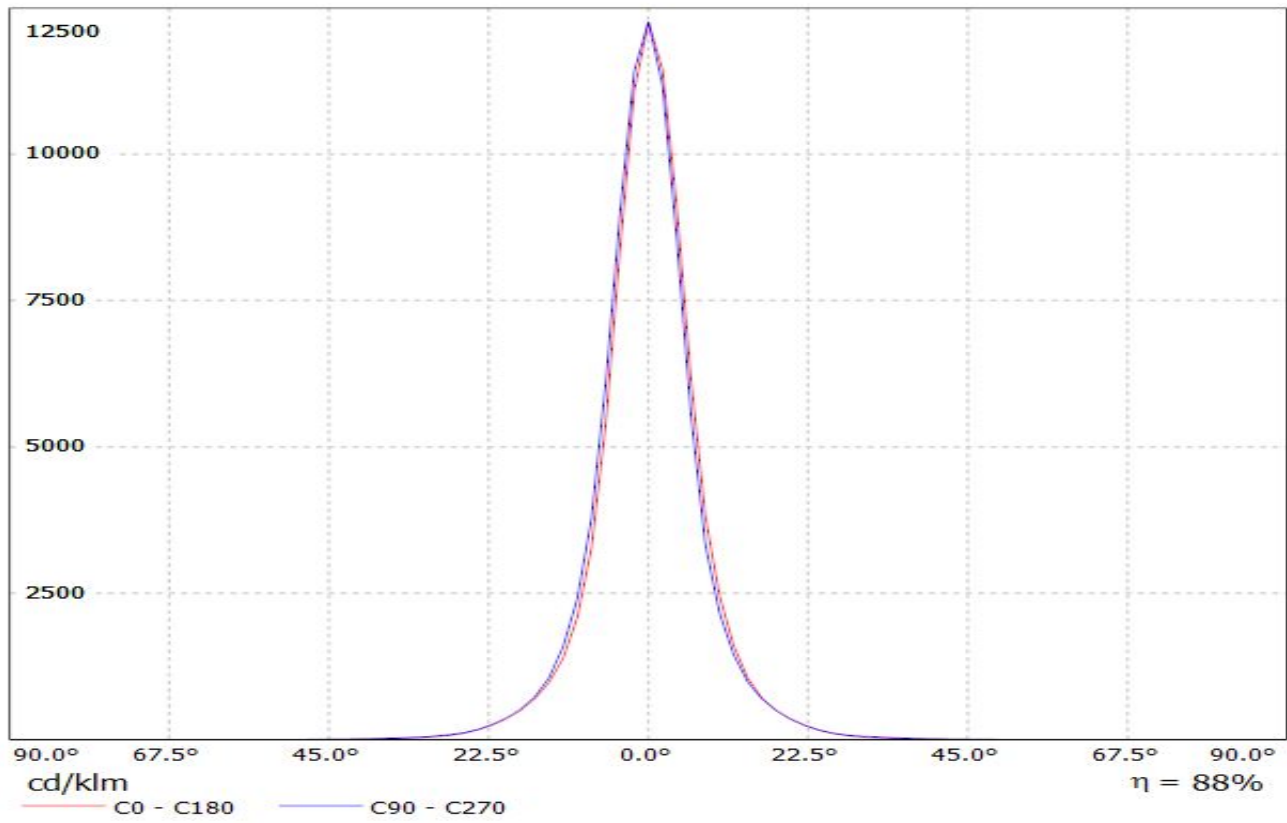
D

A

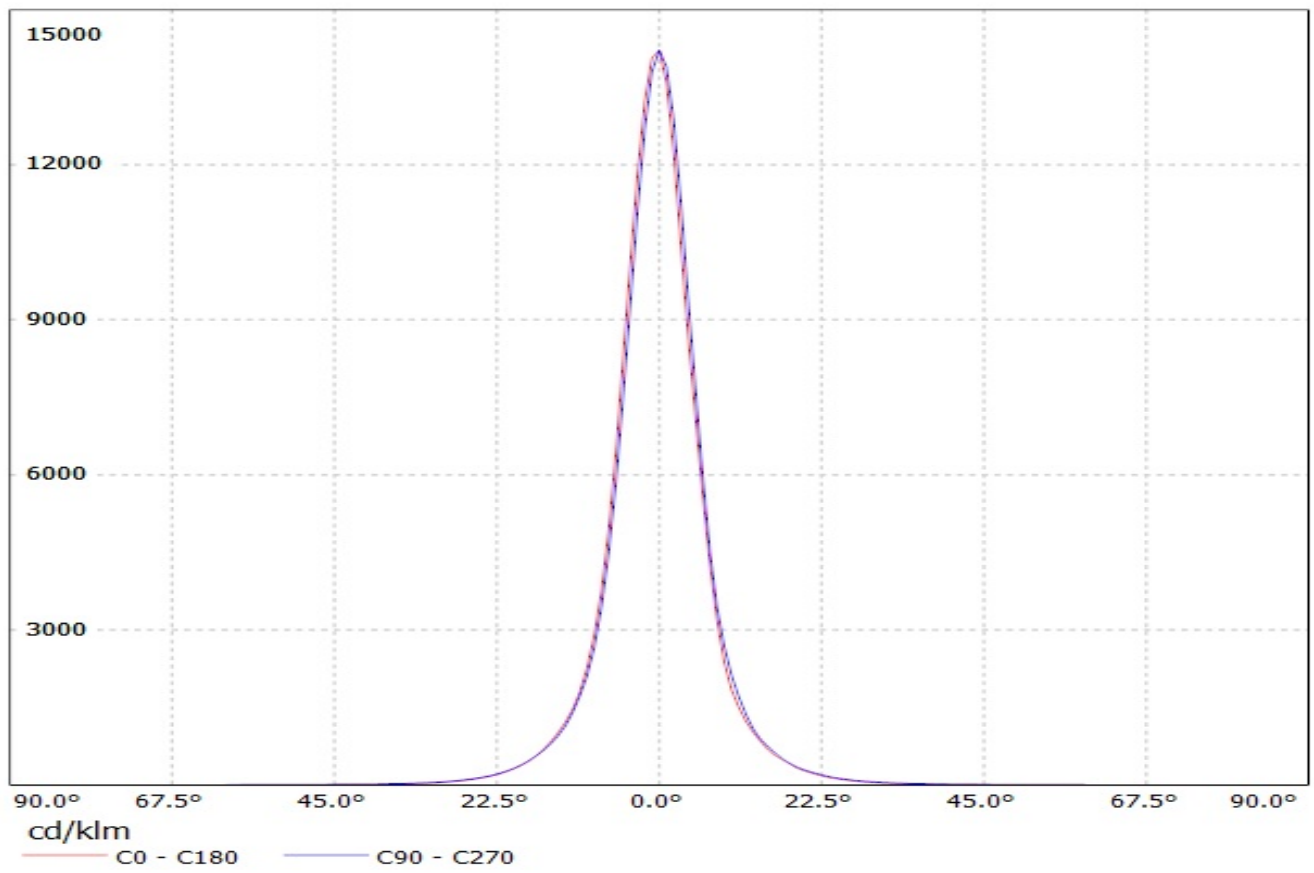
Luminaire: LEDiL Oy CA11264\_HEIDI-D Eff. 88%  
Lamps: 1 x Cree XP-E2 92lm@250mA CCT=5500K P=0.8W



Luminaire: LEDiL Oy CA11264\_HEIDI-D\_(XP-G2) Efficiency=88%  
Lamps: 1 x Cree XP-G2 103lm @ 250mA CCT= P=0.80W I=250mA

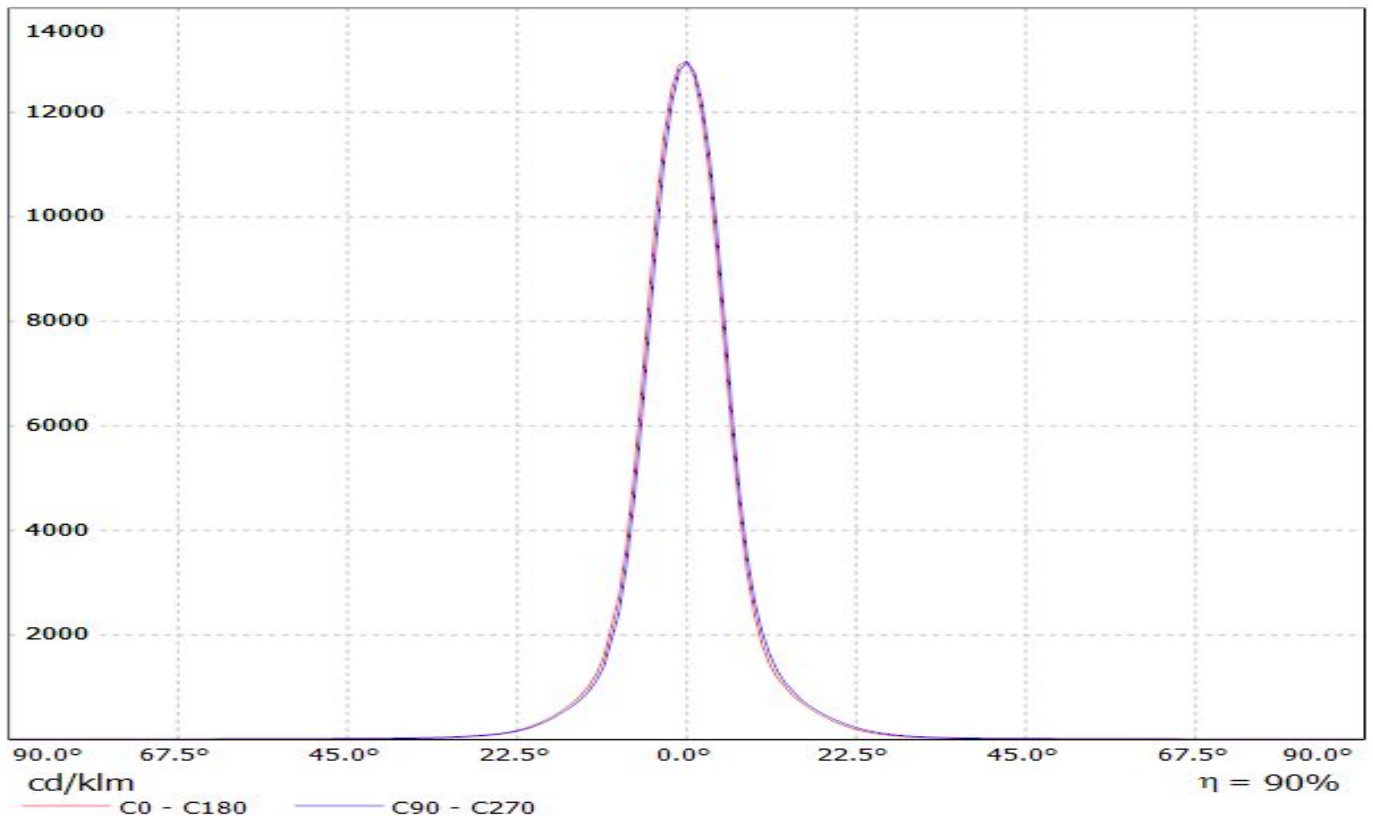


Luminaire: Ledil Oy CA11264\_HEIDI-D\_(NCSxx19B) Efficiency=85%  
Lamps: 1 x Nichia NCSxx19B (NCSL119BE) 88lm @ 250mA CCT=3000K P=0.8W I=250mA



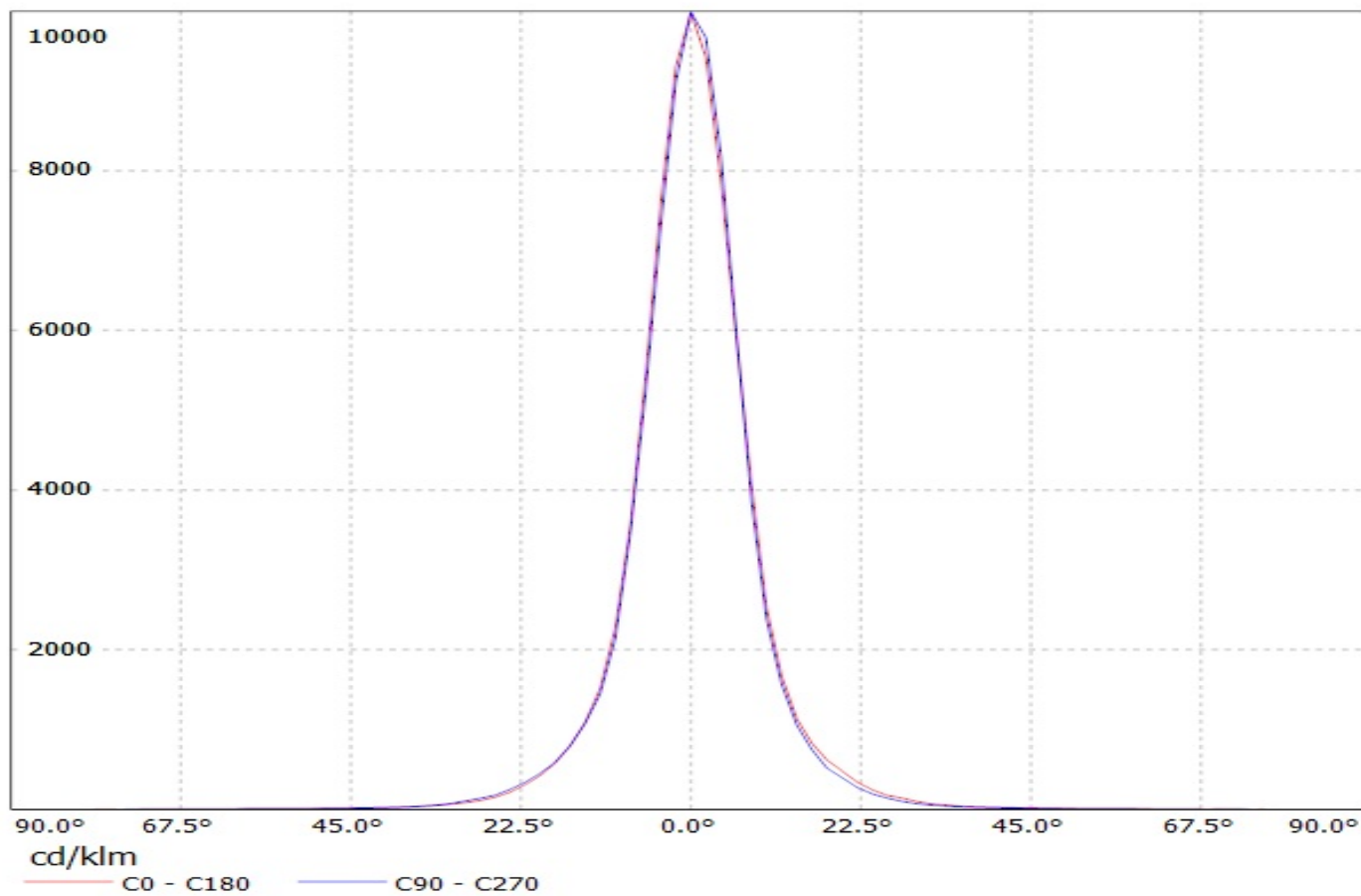
**LEDiL Oy CA11264\_HEIDI-D\_(LUXEON\_T)\_2 Eff.90.1% / LDC (Linear)**

Luminaire: LEDiL Oy CA11264\_HEIDI-D\_(LUXEON\_T)\_2 Eff.90.1%  
Lamps: 1 x LUXEON T (74lm@250mA)

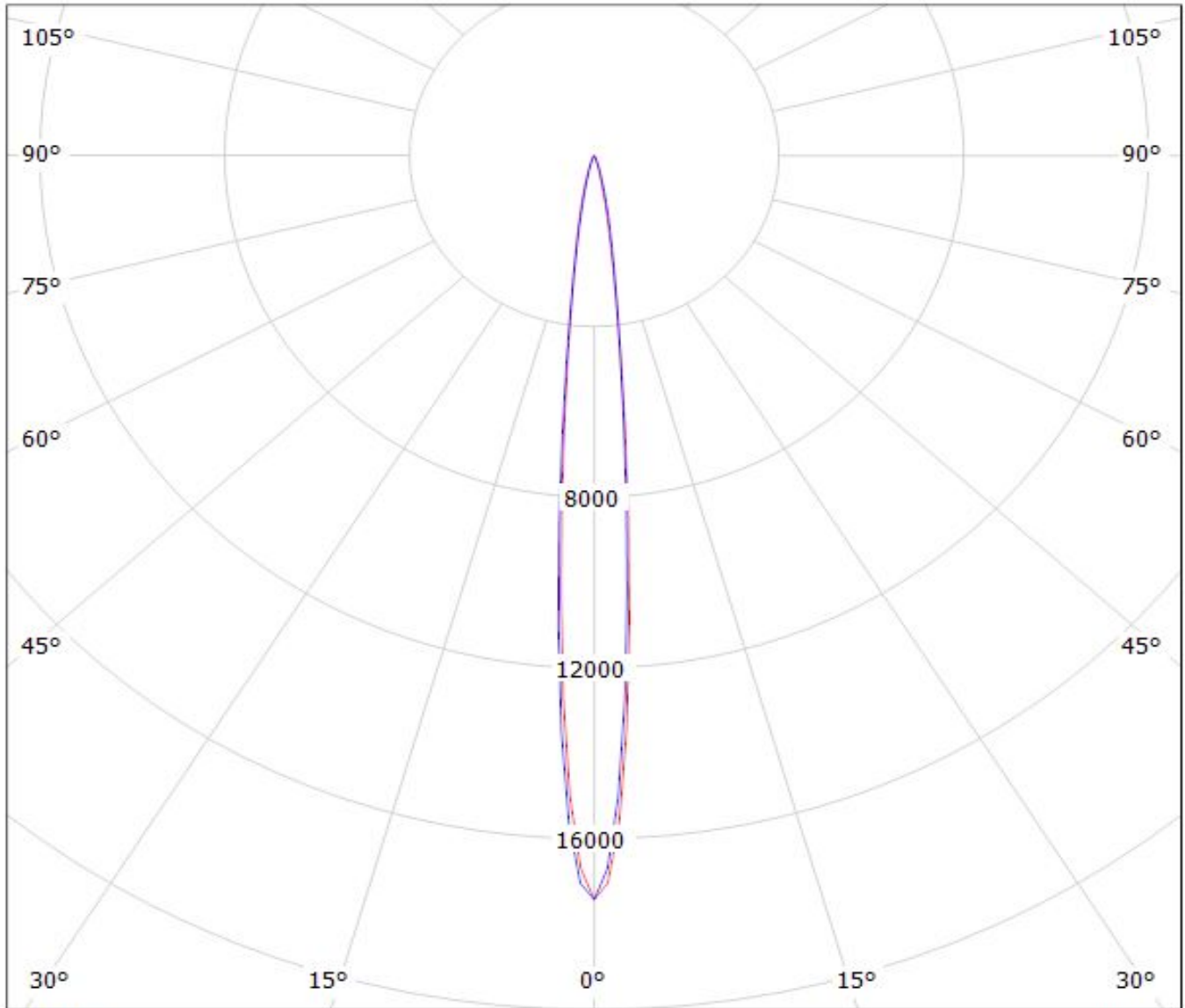




Luminaire: Ledil Oy CA11264\_HEIDI-D (Nichia 219B 109lm @ 250mA) Efficiency=91%  
Lamps: 1 x Nichia 219B 109lm @ 250mA



Luminaire: LEDiL Oy CA11264\_HEIDI-D Eff. 88%  
Lamps: 1 x Cree XP-E2 92lm@250mA CCT=5500K P=0.8W

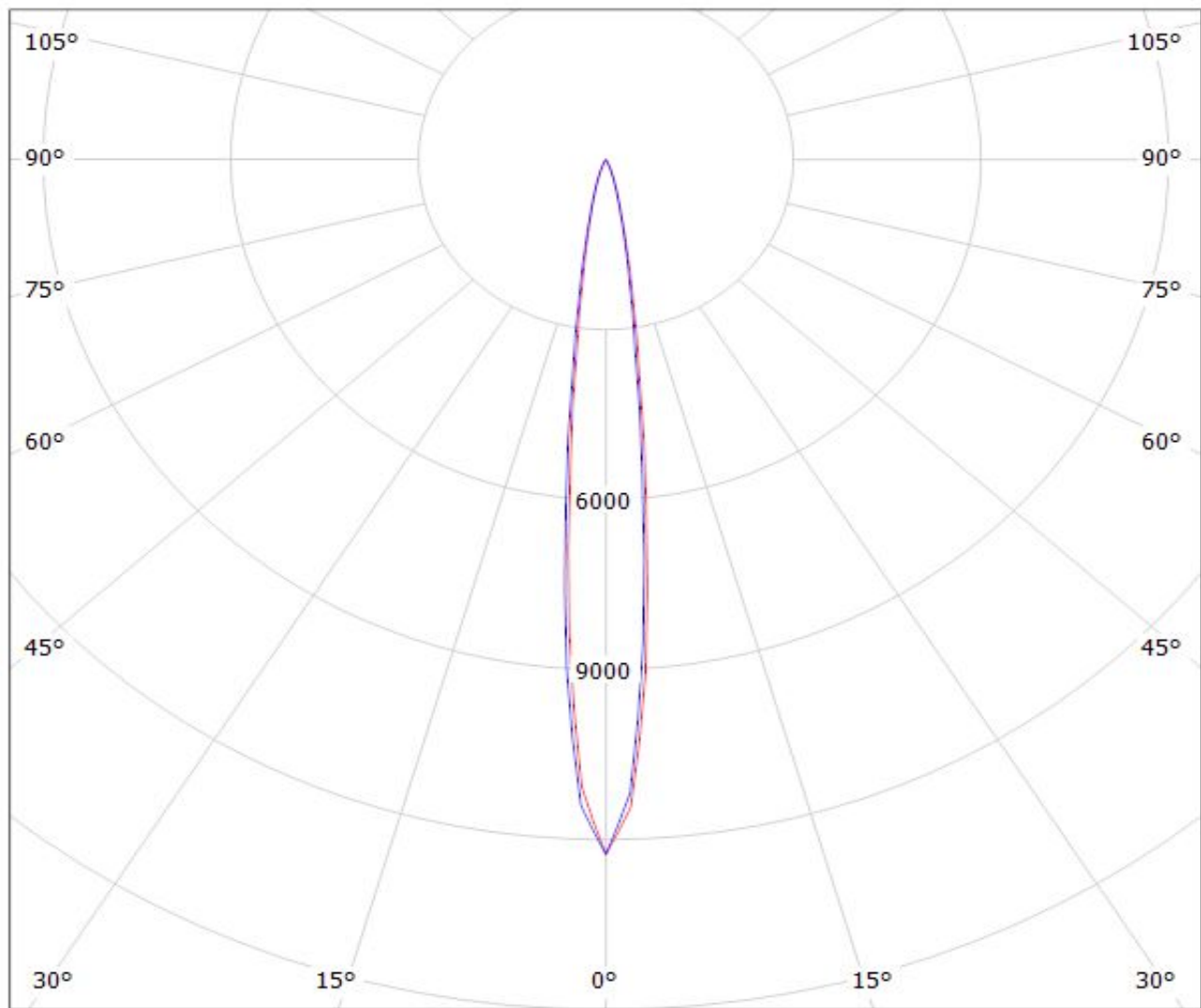


cd/klm

— C0 - C180 — C90 - C270

$\eta = 88\%$

Luminaire: LEDiL Oy CA11264\_HEIDI-D\_(XP-G2) Efficiency=88%  
Lamps: 1 x Cree XP-G2 103lm @ 250mA CCT= P=0.80W I=250mA



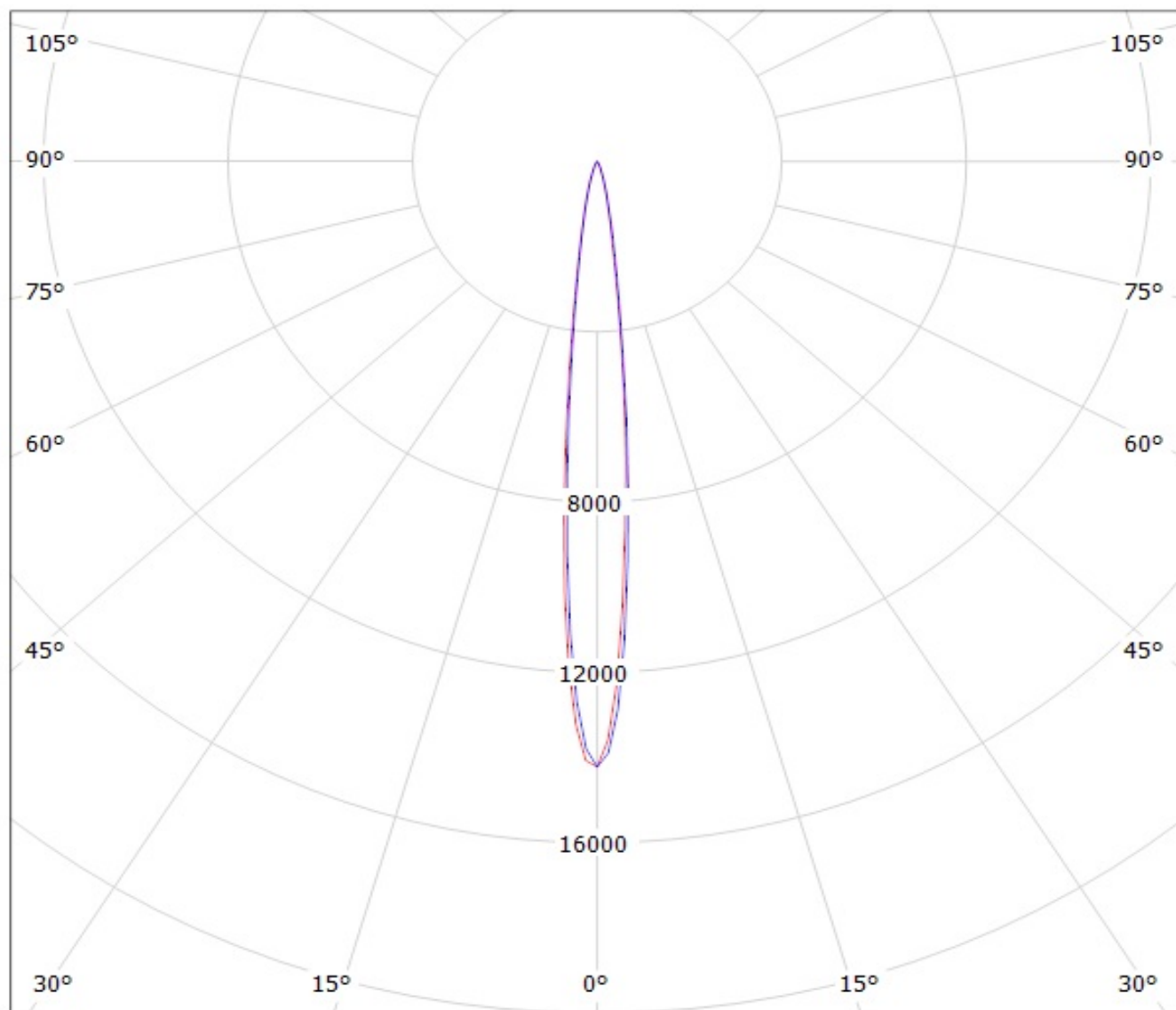
cd/klm

$\eta = 88\%$

— C0 - C180    — C90 - C270

Luminaire: Ledil Oy CA11264\_HEIDI-D\_(NCSxx19B) Efficiency=85%

Lamps: 1 x Nichia NCSxx19B (NCSL119BE) 88lm @ 250mA CCT=3000K P=0.8W I=250mA



cd/klm

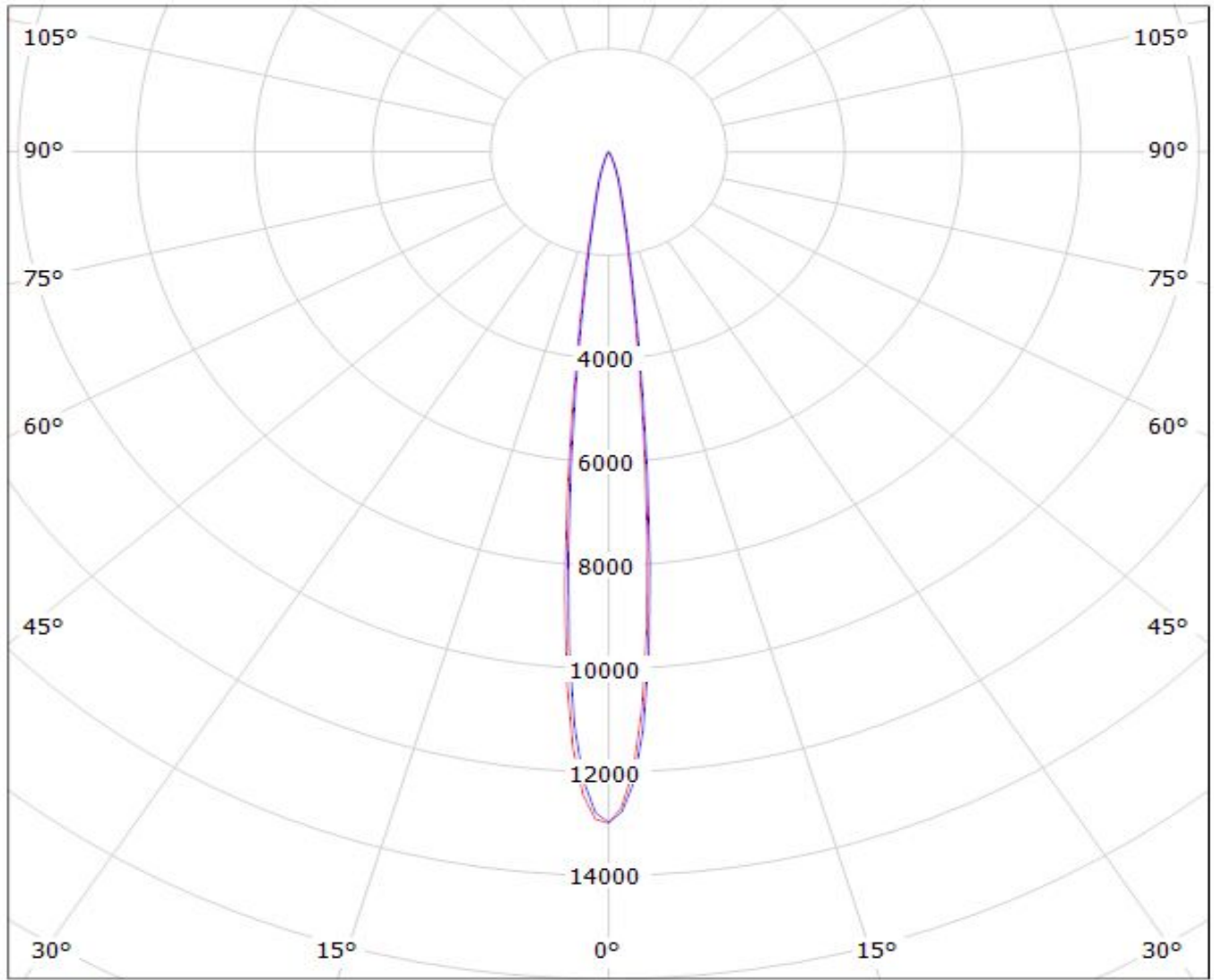
— C0 - C180

— C90 - C270

# LEDiL Oy CA11264\_HEIDI-D\_(LUXEON\_T)\_2 Eff.90.1% / LDC (Polar)

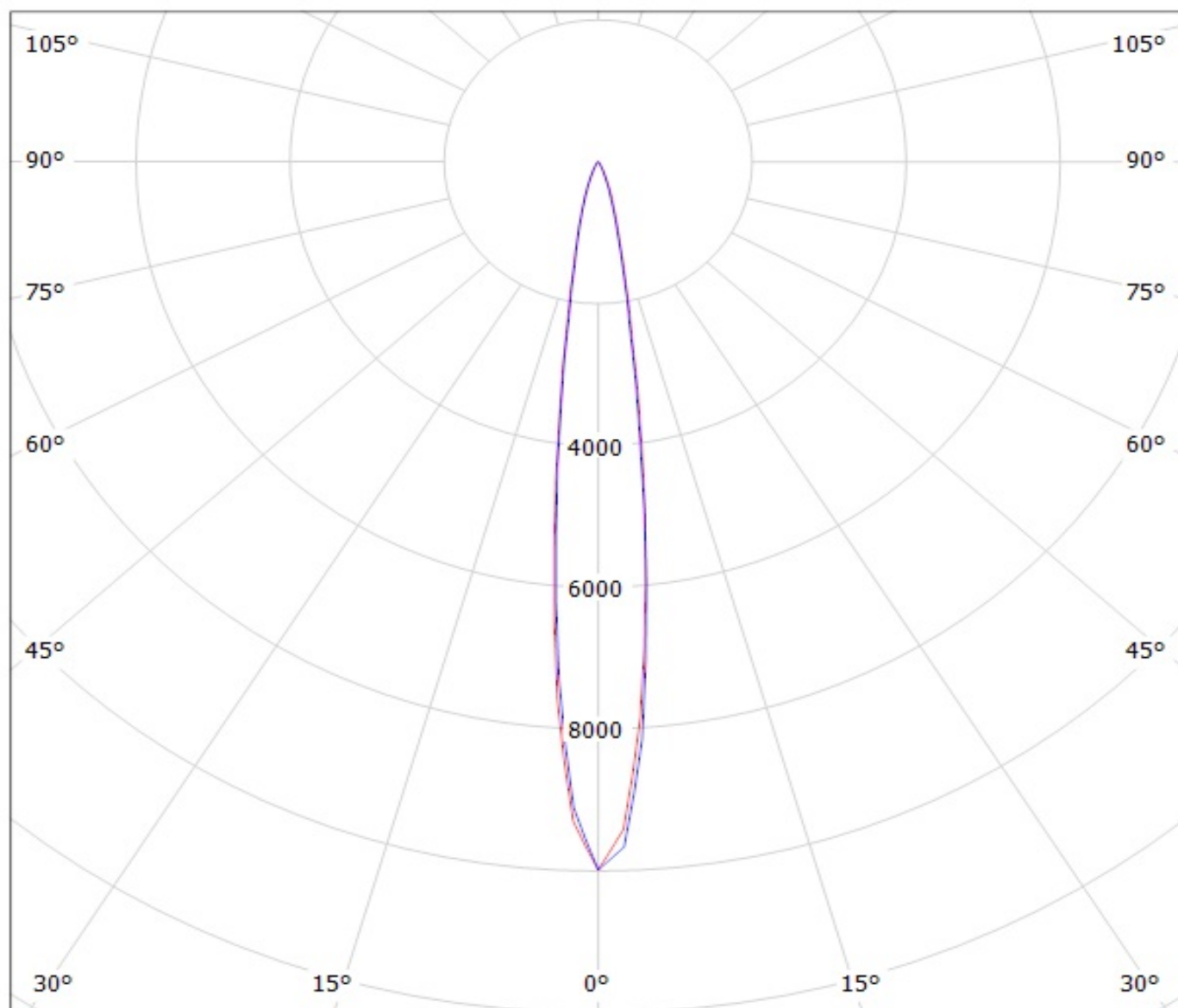
Luminaire: LEDiL Oy CA11264\_HEIDI-D\_(LUXEON\_T)\_2 Eff.90.1%

Lamps: 1 x LUXEON T (74lm@250mA)



— C0 - C180 — C90 - C270

Luminaire: Ledil Oy CA11264\_HEIDI-D (Nichia 219B 109lm @ 250mA) Efficiency=91%  
Lamps: 1 x Nichia 219B 109lm @ 250mA



cd/klm

— C0 - C180

— C90 - C270

**NOTE: The typical divergence will be changed by different color, chip size and chip position tolerance. The typical total divergence is the full angle measured where the luminous intensity is half of the peak value.**