



# PRODUCT DATASHEET

## Stradella series

last update 14/12/2017

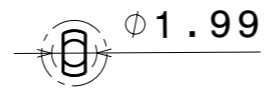
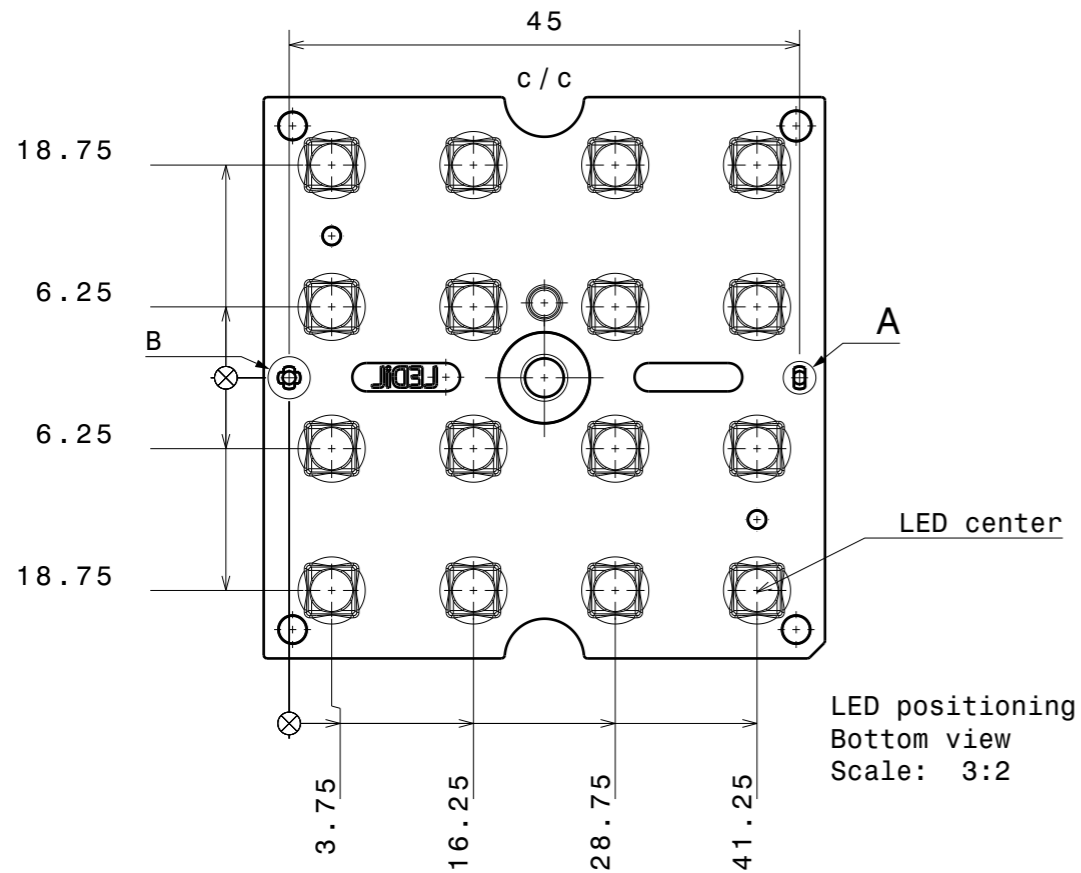
### DETAILS

<b>Product Number</b>	C16220_STRADELLA-16-T1-A
<b>Family</b>	Stradella
<b>Type</b>	Lens
<b>Color</b>	clear
<b>Diameter</b>	49,5x49,5 mm
<b>Height</b>	4,3 mm
<b>Style</b>	
<b>Optic Material</b>	PMMA
<b>Holder Material</b>	
<b>Fastening</b>	pin, screw
<b>Status</b>	production ready
<b>ROHS Compliant</b>	Yes
<b>Date Updated</b>	14/12/2017

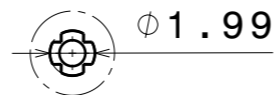


### OPTICAL PROPERTIES

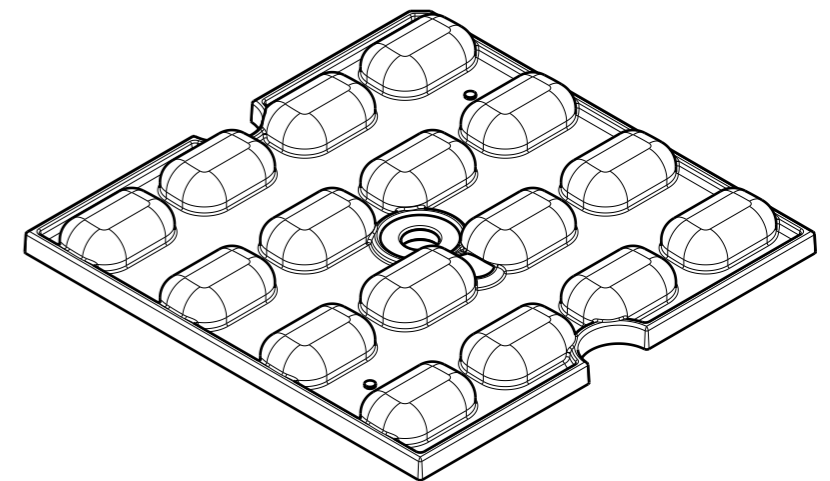
LED	Viewing Angle	Light Beam	Efficiency	cd/lm	Connector
LUXEON 3030 2D	sim: Asymmetric	sim: Asymmetric	sim: 94 %	sim: 0.893	-
NFSx757G	sim: Asymmetric	sim: Asymmetric	sim: 94 %	sim: 0.818	-



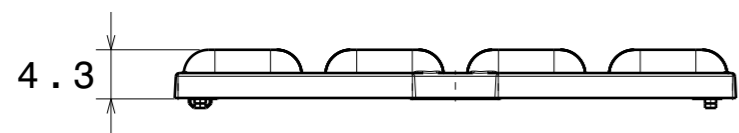
Detail A  
Scale: 3:1



Detail B  
Scale: 3:1



Isometric view  
Scale: 3:2

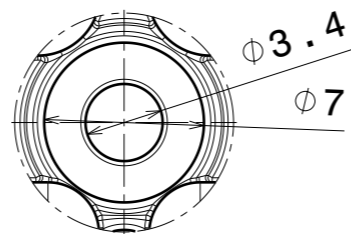
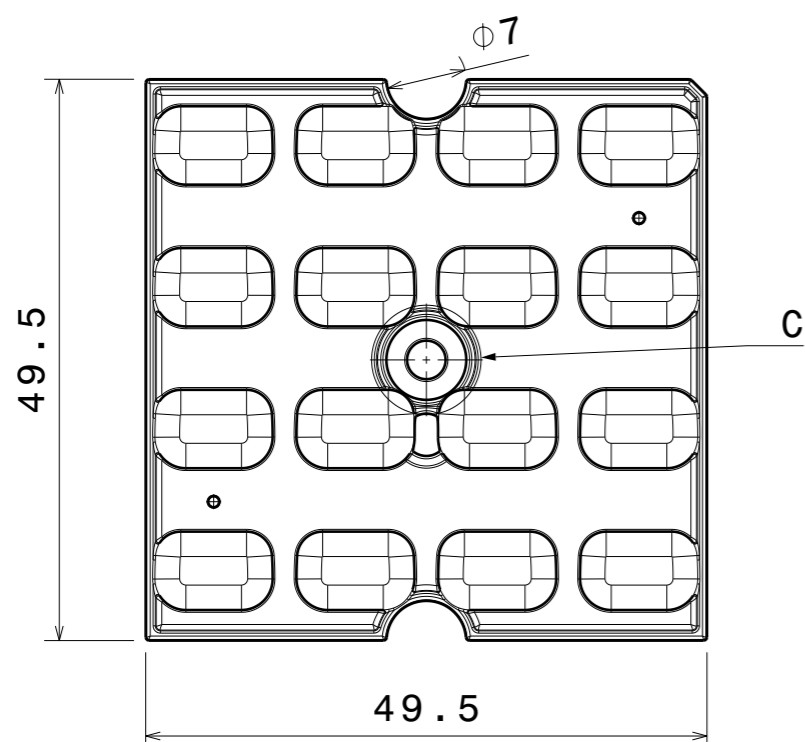


Front view  
Scale: 3:2



Left view  
Scale: 3:2

2.28



Detail C  
Scale: 3:1

PART NO	MATERIAL
C16220_STRADELLA-16-T1-A	PMMA

Tolerances if not otherwise shown  
According to DIN ISO 2768-1  
Linear measures:  
Up to 30mm class M, otherwise class C.  
According to DIN ISO 2768-2  
Form and position: class L

**LEDiL** Ledil Oy  
Salorankatu 10  
FIN 24240 SALO  
Finland

FIRST ANGLE PROJECTION:

DRAWING TITLE  
**STRADELLA-16-T1-A mechanical drawing**

This drawing is the property  
of LEDiL Oy. It may not be  
reproduced, copied or  
communicated without a written  
agreement with LEDiL Oy.

SIZE	PART NUMBER
A3	C16220

SCALE	WEIGHT	SHEET
3:2	5,6 g	1/1

**NOTE: The typical divergence will be changed by different color, chip size and chip position tolerance. The typical total divergence is the full angle measured where the luminous intensity is half of the peak value.**