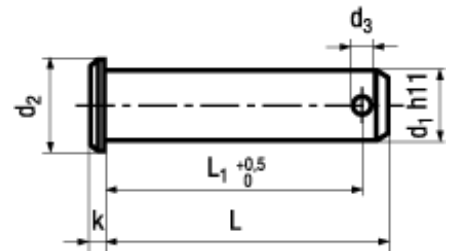




DIN 1434

Standard withdrawn



BN 483

Clevis pins with hole

for fork heads

Steel

plain

- ~UNI 1710



Appropriate to washer acc. DIN 433 and split pin DIN 94

$d_3 \varnothing 5$: according to DIN 1434 is 1,6 mm

Article#	d_1	d_2	d_3	k	L_1	L
1190644	4	6	1	1	10,2	12
1190652	5	8	1,2	1,5	12	14
1190660	6	9	1,6	1,5	15,5	18
1190679	8	12	2	2	19	22
1190687	10	14	3,2	2	24	28
1190695	12	17	4	3	30	35
1190709	14	19	4	3	35	40
1190717	16	21	4	3	40	45