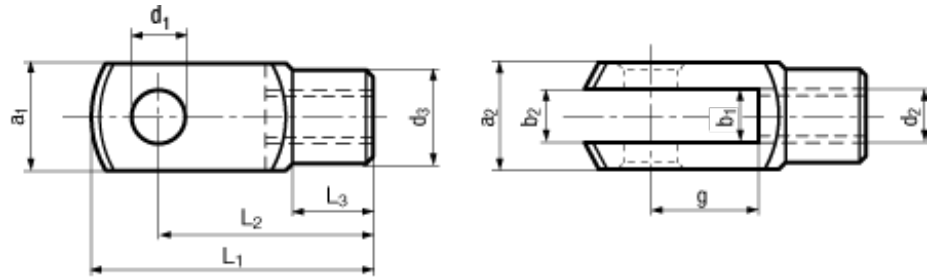


DIN 71752



BN 482

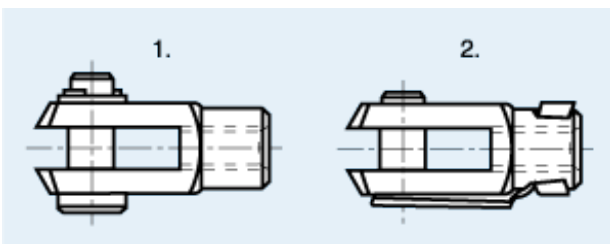
Fork heads

normal thread

Free-cutting steel

zinc plated blue

- ~UNI 1676



- ☒ Variante 1: fork head, clevis pin, washer, split pin
- ☒ Variante 2: fork head, ES-bolt (BN 484)

Article#	d ₁ H9	g ±0,5	d ₂	d ₃ ±0,3	a ₁ h11	a ₂ +0,3/ -0,16	b ₁ B13	b ₂ B13	b ₂ +0,7/ +0,15	L ₁ ±0,5	L ₂ ±0,3	L ₂ ±0,4	L ₃ ±0,2
1190466	4	8	M4	8	8	8	4	4	-	21	16	-	6
1190474		16	M4	8	8	8	4	4	-	29	24	-	6
1190482	5	10	M5	9	10	10	5	5	-	26	20	-	7,5
1190490		20	M5	9	10	10	5	5	-	36	30	-	7,5
1190504	6	12	M6	10	12	12	6	6	-	31	24	-	9
1190512		24	M6	10	12	12	6	6	-	43	-	36	9
1190520	8	16	M8	14	16	16	8	8	-	42	-	32	12
1190539		32	M8	14	16	16	8	8	-	58	-	48	12
1190547	10	20	M10	18	20	20	10	10	-	52	-	40	15
1190555		40	M10	18	20	20	10	-	10	72	-	60	15
1190563	12	24	M12	20	24	24	12	-	12	62	-	48	18
1190571		48	M12	20	24	24	12	-	12	86	-	72	18
1190598	14	28	M14	24	27	27	14	-	14	72	-	56	22,5
1190601		56	M14	24	27	27	14	-	14	101	-	85	22,5
1190628	16	32	M16	26	32	32	16	-	16	83	-	64	24
1190636		64	M16	26	32	32	16	-	16	115	-	96	24