

Made from xirodur® B180, for axial loads



Polymer ball transfer unit



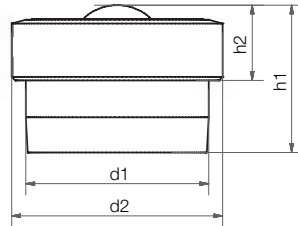
Polymer ball transfer unit



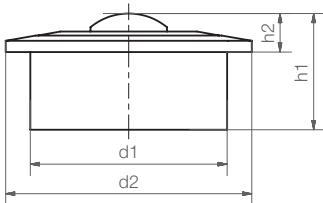
Axial polymer ball transfer unit for high loads (HH)



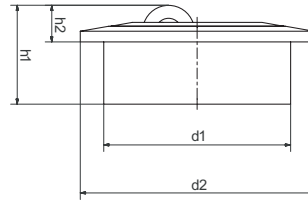
Axial polymer ball transfer unit with soft roller made from xirodur® D180 (HS)



BB-505-B180-POM



BB-522-B180-POM
BB-515-B180-POM



BB-515A-B180-HH/-HS
BB-522A-B180-HH/-HS



Order key

Type xirodur® Options

BB-522A-B180-HS



Options:

Polymer ball transfer unit:
POM ball

POM = POM

Axial polymer ball transfer unit:

B180 = HH (hard roller) or

D180 = HS (soft roller)

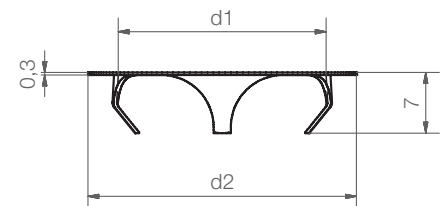
Technical data and dimensions [mm]

Size	Max. stat. bearing load axial [N]	Inner Ø		Height		Weight [g]	Part No.
		d1	d2	h1	h2		
505	35	10.4	12.0	8.4	4.3	0.9	BB-505-B180-POM
515	80	24.0	31.0	21.0	9.8	8.7	BB-515-B180-POM
515A	150	24.0	31.0	14.3	5.3	15.6	BB-515A-B180-□
522	110	36.0	45.0	30.0	9.8	28.8	BB-522-B180-POM
522A	300	36.0	45.0	21.25	7.05	21.7	BB-522A-B180-□

Clamp rings for xiros®-polymer ball transfer units



xiros® clamp rings made from stainless steel offer the possibility to install xiros® ball transfer units in another orientation than the standard horizontal position. Easy assembly and disassembly.



Dimensions [mm]

Part No.	For ball transfer unit	d1	d2	Housing bore
BB-515-CR	BB-515-B180-POM/BB-515A-B180-□	24	31	25.0 -0.2
BB-522-CR	BB-522-B180-POM/BB-522A-B180-□	36	41	37.3 -0.3