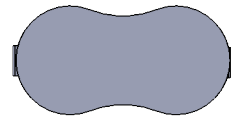
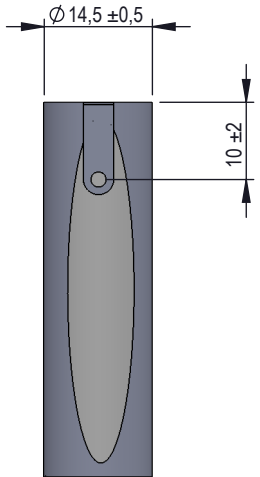
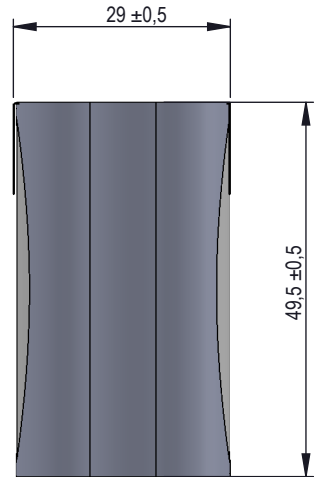
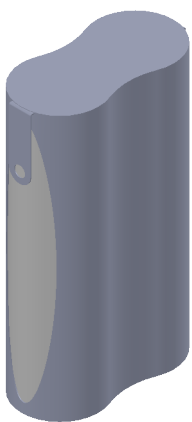


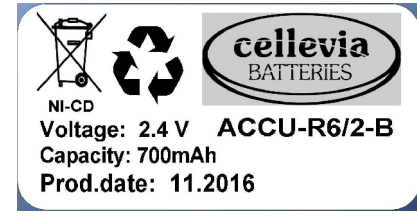
SZYBKA DROGA DO PROJEKTU: PROJEKTY NIEADZKOROWANE PRZEZ DTTIME(5731) VREA700 2,40V 0,70Ah cyli

### Specifications

Nominal Voltage [V]		2.4
Typical capacity [mAh]		700
Size [mm]		According to the drawing
Typical charge [mA]		70 (16 hrs)
Rapid charge [mA]		700 (temp.20°C)
Standard continuous discharge current [mA]		2100 (temp. 20°C)
Charge temperature	Typical	0°C do 50°C
Discharge temperature	Continous	-20°C do 60°C
Storage temperature	Recommended	5°C do 25°C



Label 45x25mm



Material/ Materiał:	Scale/ Skala: 1:1	Format/ Format arkusza: A4	Weight/ Masa:	Sheet/ Arkusz: /	Version/ Wersja: _
Finishing/ Wykończenie : _	Date/ Data:				Revision/ Rewizja: _
Designed by/ Konstruował:					ERP system number:
Checked by/ Sprawdził:					57731
Approved by/ Zatwierdził:					
Update/ Aktualizował:	Update/ Data aktualizacji:	Date of implementation/ Data wykonania:	Product reference/ Nazwa:	Docum. number/ Nr rysunku:	
J. Dadacz		2016-11-28	ACCU-R6/2-B VREA700 2,40V 0,70Ah cyli		