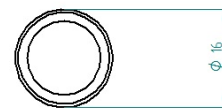
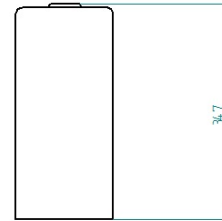
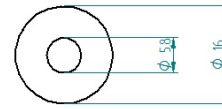


Product name: ICR16340-70PCM Protected

External dimensions:

Catalog Index	05150
Nominal Voltage	3.70V
Nominal Capacity	700mAh
Charging Voltage (max)	4.20V
Discharging Voltage (min)	2.50V
Standard Charging Current	300mA
Standard Discharging Current	150mA
Cell	ICR16340-70PCM
Dimension	Φ16.0x34.7mm ±0.2
Weight	22.0g



Electrical parameters of the PCM system

Overcharge Protection Voltage	on	4.325V ±0.025
	off	4.075V ±0.025
Over Discharge Protection Voltage	on	2.50V ±0.05
	off	2.90V ±0.05
Over Current Protection		3A

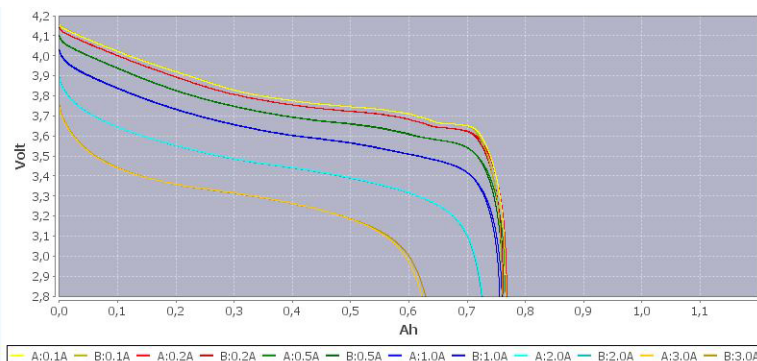
High plus



PCM protects system

The PCM system, which is mounted in a battery, protects it against overcharging, over-discharge, overload and short circuit. The use of PCM / PCB systems, BMS, becomes necessary to avoid damage to the cell as a result explosion or fire.

Discharge characteristics of the cell ICR16340-70PCM



Characteristics of charging the cell ICR16340-70PCM

