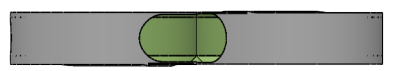
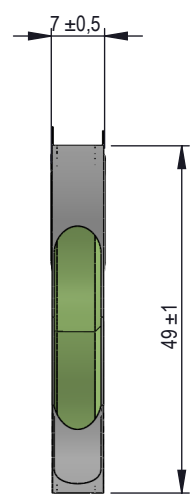
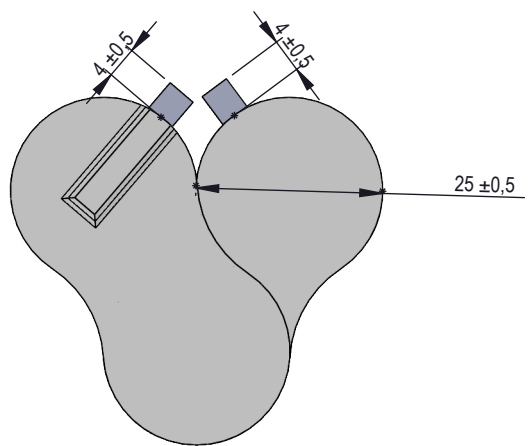
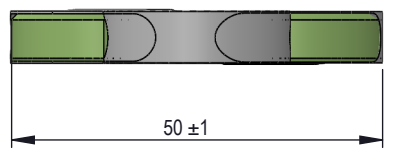
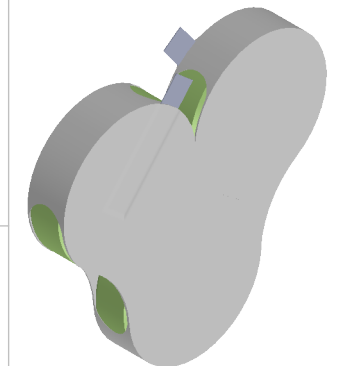


S/DZIAŁ_BADAN_I_ROZWOJU/PUBLICZNY_PROJEKT_NIEMODLIFOWANE_PREZDITIME_47534_WAM_CPG_H260BC_3,6V/0,26Ah_guzi



Specifications		
Nominal Voltage [V]	1.2	
Typical capacity [mAh]	80	
Size [mm]	According to the drawing	
Typical charge [mA]	26 (15 hrs)	
Accelerated charge [mA]	52 (temp. 20 °C)	
Maximum discharge current [mA]	130 (temp. 20 °C)	
Charge temperature	Typical	10 °C do 45 °C
Discharge temperature	Continuous	-20 °C do 45 °C
Storage temperature	Recommended	-20 °C do 65 °C

Material/ Materiał:	Scale/ Skala: 1:1	Format/ Format arkusza: A4	Weight/ Masa:	Sheet/ Arkusz: /	Version/ Wersja: _
Finishing/ Wykończenie: _	Date/ Data:				Revision/ Rewizja: _
Designed by/ Konstruktor:					ERP system number: 47534
Checked by/ Sprawdził:					
Approved by/ Zatwierdził:					
Update/ Aktualizował: J. Dadacz	Update/ Data aktualizacji:	Date of implementation/ Data wykonania: 2016-11-10	Product reference/ Nazwa: ACCU-280SERCE CPG H260BC 3,60V 0,26Ah guzi	Docum. number/ Nr rysunku:	

1 2 3 4 5 6

A

B

C

D

A

B

C

D

1 2 3 4 5 6