

Drg No :- C 44441

INSTALLATION DRAWING

ISSUE	REVISION	DATE
1	FIRST ISSUE	10/12/01

SPECIFICATION

ACTUATING FORCE :- 7.2N (26ozf) MAX

RELEASE FORCE :- 1.7N (6ozf) MIN

FREE POSITION :- 40.8 (1.6) MAX

OPERATING POSITION :- 39.3±0.4 (1.55)

MOVEMENT DIFFERENTIAL :- 0.08(.003)MAX

OVERTRAVEL(AVAILABLE) :- 4.6 (.18)

FORCE EXERTED AT FULL OVERTRAVEL :- 16.7N (60ozf)MAX

SWITCH SEALED AND INSPECTED TO A PRESSURE OF 20.7 KN/m²

SPECIAL FEATURE:-

4BR/510 FITTED WITH 18AWG UL CABLES.

RS STOCK NUMBER :- 414 5652

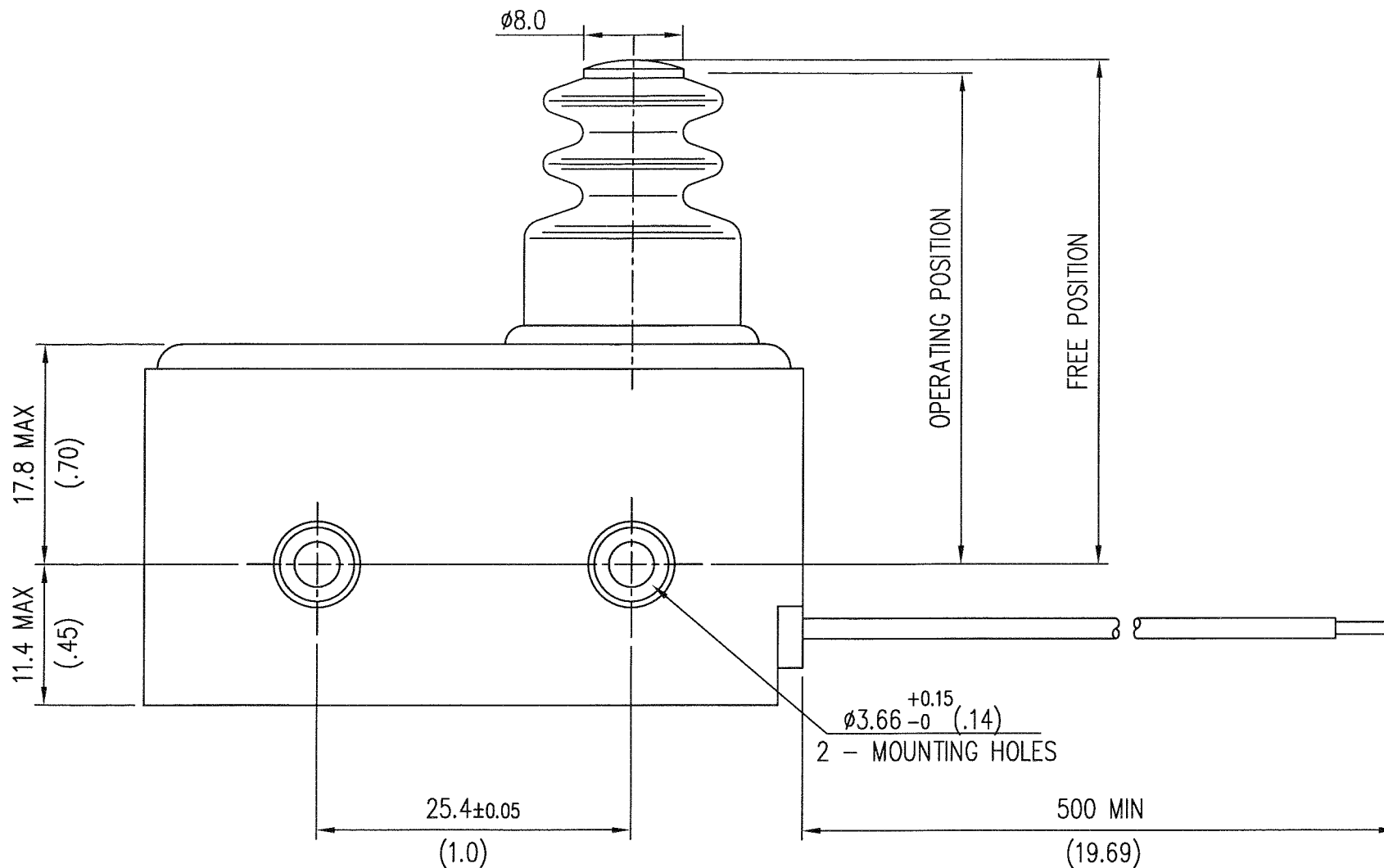
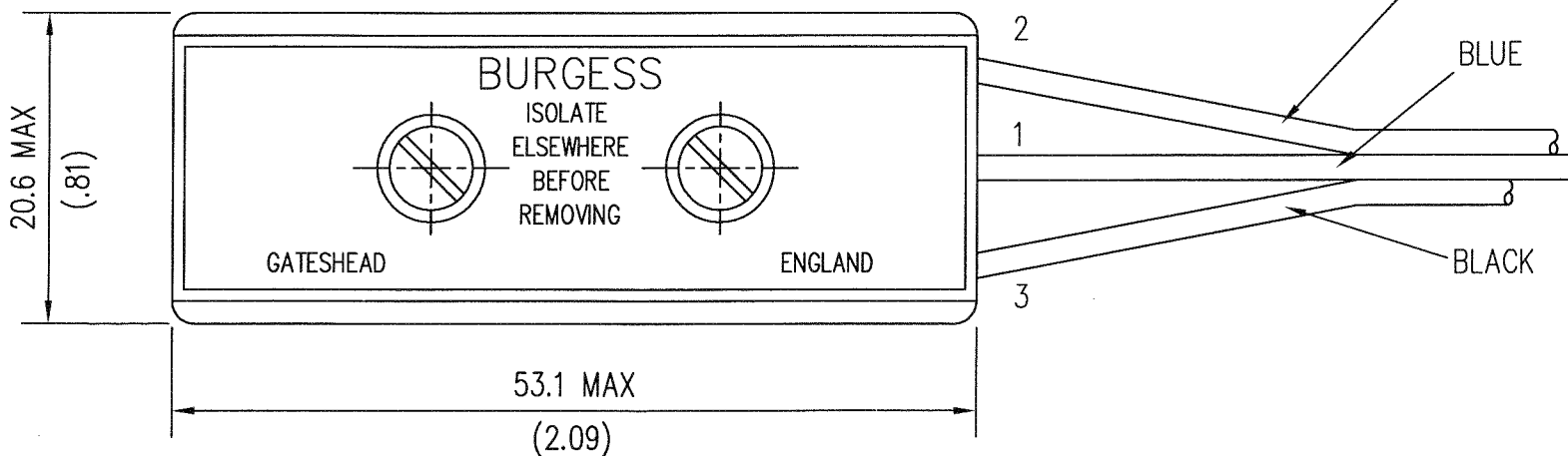
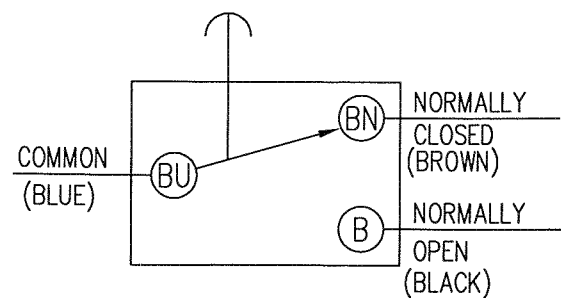


DIAGRAM OF CONNECTIONS

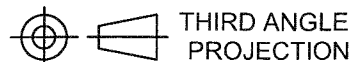


1	2	3	4	5	6	7	8	9
---	---	---	---	---	---	---	---	---

SAIA-Burgess Electronics

SWITCHES • MOTORS • CONTROLLERS

SAIA-Burgess Electronics Limited
Dukesway, Team Valley Trading Estate
Gateshead, Tyne & Wear NE11 0UB
Tel: (0191)4016100, Fax: (0191)4016322



DO NOT SCALE !

This drawing must only be amended on CAD system

TOLERANCES UNLESS STATED:-

NO DECIMAL PLACE ±0.50 1 DECIMAL PLACES ±0.25

2 DECIMAL PLACES ±0.15 ANGULAR ±1°

INCH - OUNCE UNITS (IN BRACKETS)

ALL DIMENSIONS SPECIFIED IN MILLIMETRES

DRAWN	D.J.C.	Approved	
DATE	10/12/01	DRAWING OFFICE	<i>[Signature]</i>
SCALE	2 : 1	ENGINEERING	<i>[Signature]</i>
DATE ISSUED		QUALITY ASSURANCE	<i>[Signature]</i>

TITLE / DESCRIPTION

4BRSH

Drg No :- C 44441

A3