

38

3823

Multimodul™ connectors, pitch 2.5 mm

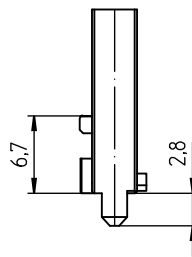
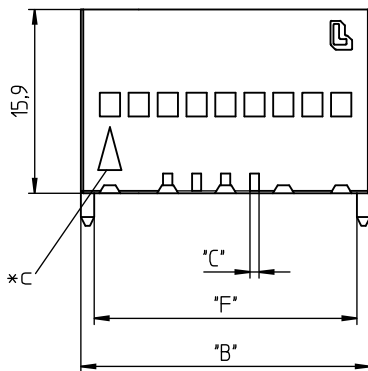
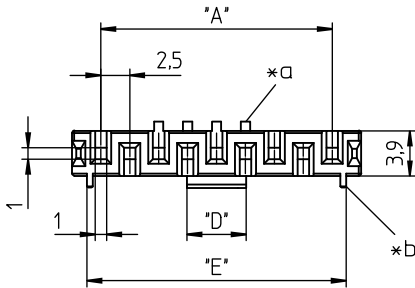


Empty Multimodul™ housing for reception of crimp contacts, for indirect mating

---

State: Active

---



- \*a keying nose; 2 and 3 pole versions with additional options
- \*b guide rib

**Environmental conditions**

Temperature range -40 °C/+130 °C – 3823 ... 00  
-40 °C/+120 °C – 3823 ... 30<sup>1</sup>

<sup>1</sup> upper limit temperature (insulating body) RTI (electrical) of the UL Yellow Card

**Materials**

Insulating body PBT GF, V-0 according to UL94 – 3823 ... 00  
PA GF, V-0 according to UL94 – 3823 ... 30<sup>1</sup>

<sup>1</sup> 30: component glow wire resistant (GWT 750 °C), testing acc. to IEC 60695-2-11, assessment acc. to IEC 60335-1 (flame < 2 s)

**Mechanical data**

Further data see suitable crimp contact proposed keyings on request

**Electrical data (at T<sub>amb</sub> 20 °C)**

Rated current 5,0 A (T<sub>v</sub> 30 °C)  
2,5 A (T<sub>v</sub> 70 °C)  
Rated voltage 200 V AC  
Material group IIIa (CTI ≥ 250)<sup>1</sup>  
Creepage distance 2,15 mm  
Clearance 1,90 mm  
Insulation resistance > 1 GΩ  
Further data see suitable crimp contact

<sup>1</sup> see suitable crimp contact

**Associated products**

Counterparts

☞ 3850 ☞ 3851 ☞ 3852  
☞ 3853 ☞ 8385 A 01

Accessories

☞ 3111 01 G ☞ 3111 01 G ☞ 3111 01 G  
☞ 3111 01 L ☞ 3111 01 L ☞ 3111 01 L  
☞ 3111 03 G ☞ 3111 03 G ☞ 3111 03 G  
☞ 3111 03 L ☞ 3111 03 L ☞ 3111 03 L

| Designation | Pole Number | PU (Pieces) | MDQ (Pieces) | Dimensions |        |           |        |        |        |
|-------------|-------------|-------------|--------------|------------|--------|-----------|--------|--------|--------|
|             |             |             |              | A (mm)     | B (mm) | C (mm)    | D (mm) | E (mm) | F (mm) |
| 3823 02     | 2           | 250         | 2000         | 2.5        | 7.5    | 1.3/0.8*a | 1.2    | 5.2    | 5.2    |
| 3823 03     | 3           | 250         | 2000         | 5.0        | 10.0   | 1.3/0.8*a | 3.2    | 7.7    | 7.7    |
| 3823 04     | 4           | 250         | 2000         | 7.5        | 12.5   | 0.8       | 5.1    | 10.2   | 10.2   |
| 3823 05     | 5           | 250         | 2000         | 10.0       | 15.0   | 0.8       | 5.1    | 12.4   | 12.7   |
| 3823 06     | 6           | 250         | 2000         | 12.5       | 17.5   | 0.8       | 5.1    | 14.9   | 15.2   |
| 3823 07     | 7           | 250         | 2000         | 15.0       | 20.0   | 0.8       | 5.1    | 17.4   | 17.7   |
| 3823 08     | 8           | 250         | 2000         | 17.5       | 22.5   | 0.8       | 5.1    | 19.9   | 20.2   |
| 3823 09     | 9           | 250         | 2000         | 20.0       | 25.0   | 0.8       | 5.1    | 22.4   | 22.7   |
| 3823 10     | 10          | 250         | 2000         | 22.5       | 27.5   | 0.8       | 5.1    | 24.9   | 25.2   |
| 3823 11     | 11          | 250         | 2000         | 25.0       | 30.0   | 0.8       | 5.1    | 27.4   | 27.7   |
| 3823 12     | 12          | 250         | 2000         | 27.5       | 32.5   | 0.8       | 5.1    | 29.9   | 30.2   |
| 3823 13     | 13          | 250         | 2000         | 30.0       | 35.0   | 0.8       | 5.1    | 32.4   | 32.7   |
| 3823 14     | 14          | 250         | 2000         | 32.5       | 37.5   | 0.8       | 5.1    | 34.9   | 35.2   |
| 3823 15     | 15          | 250         | 2000         | 35.0       | 40.0   | 0.8       | 5.1    | 37.4   | 37.7   |
| 3823 16     | 16          | 250         | 2000         | 37.5       | 42.5   | 0.8       | 5.1    | 39.9   | 40.2   |
| 3823 17     | 17          | 250         | 2000         | 40.0       | 45.0   | 0.8       | 5.1    | 42.4   | 42.7   |
| 3823 18     | 18          | 250         | 2000         | 42.5       | 47.5   | 0.8       | 5.1    | 44.9   | 45.2   |
| 3823 19     | 19          | 250         | 2000         | 45.0       | 50.0   | 0.8       | 5.1    | 47.4   | 47.7   |
| 3823 20     | 20          | 250         | 2000         | 47.5       | 52.5   | 0.8       | 5.1    | 49.9   | 50.2   |

Designation to be completed by further details (e.g. for keying, color or material options).

**Packaging:**

in bulk, in a cardboard box