

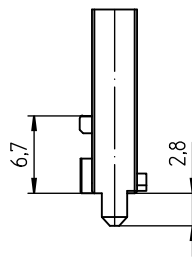
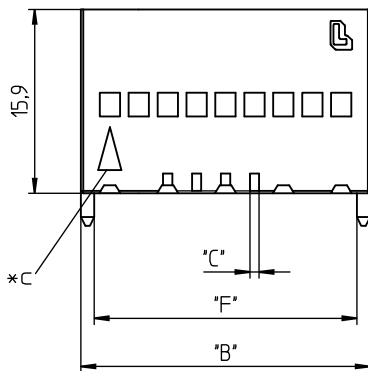
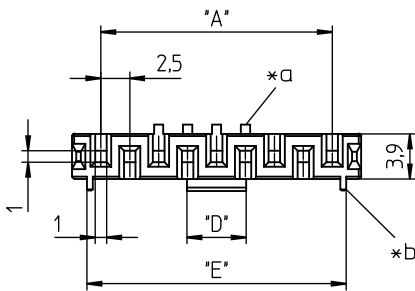
38

3823

Multimodul™ connectors, pitch 2.5 mm



Empty Multimodul™ housing for reception of crimp contacts, for indirect mating



- *a keying nose; 2 and 3 pole versions with additional options
- *b guide rib

Environmental conditions

Temperature range -40 °C/+130 °C – 3823 ... 00
-40 °C/+120 °C – 3823 ... 30¹

¹ upper limit temperature (insulating body) RTI (electrical) of the UL Yellow Card

Materials

Insulating body PBT GF, V-0 according to UL94 – 3823 ... 00
PA GF, V-0 according to UL94 – 3823 ... 30¹

¹ 30: component glow wire resistant (GWT 750 °C), testing acc. to IEC 60695-2-11, assessment acc. to IEC 60335-1 (flame < 2 s)

Mechanical data

Further data see suitable crimp contact proposed keyings on request

Electrical data (at T_{amb} 20 °C)

Rated current 5,0 A (T_v 30 °C)
2,5 A (T_v 70 °C)
Rated voltage 200 V AC (every chamber equipped)
325 V AC (every other chamber equipped)
Material group IIIa (CTI ≥ 250)¹
Creepage distance 2,15 mm
Clearance 1,90 mm
Insulation resistance > 1 GΩ
Further data see suitable crimp contact

¹ see suitable crimp contact

Associated products

Counterparts

☞ 3850 ☞ 3851 ☞ 3852
☞ 3853 ☞ 8385 A 01

Accessories

☞ 3111 01 G ☞ 3111 01 G ☞ 3111 01 G
☞ 3111 01 L ☞ 3111 01 L ☞ 3111 01 L
☞ 3111 03 G ☞ 3111 03 G ☞ 3111 03 G
☞ 3111 03 L ☞ 3111 03 L ☞ 3111 03 L

Designation	Pole Number	PU (Pieces)	MDQ (Pieces)	Dimensions					
				A (mm)	B (mm)	C (mm)	D (mm)	E (mm)	F (mm)
3823 02	2	250	2000	2.5	7.5	1.3/0.8*a	1.2	5.2	5.2
3823 03	3	250	2000	5.0	10.0	1.3/0.8*a	3.2	7.7	7.7
3823 04	4	250	2000	7.5	12.5	0.8	5.1	10.2	10.2
3823 05	5	250	2000	10.0	15.0	0.8	5.1	12.4	12.7
3823 06	6	250	2000	12.5	17.5	0.8	5.1	14.9	15.2
3823 07	7	250	2000	15.0	20.0	0.8	5.1	17.4	17.7
3823 08	8	250	2000	17.5	22.5	0.8	5.1	19.9	20.2
3823 09	9	250	2000	20.0	25.0	0.8	5.1	22.4	22.7
3823 10	10	250	2000	22.5	27.5	0.8	5.1	24.9	25.2
3823 11	11	250	2000	25.0	30.0	0.8	5.1	27.4	27.7
3823 12	12	250	2000	27.5	32.5	0.8	5.1	29.9	30.2
3823 13	13	250	2000	30.0	35.0	0.8	5.1	32.4	32.7
3823 14	14	250	2000	32.5	37.5	0.8	5.1	34.9	35.2
3823 15	15	250	2000	35.0	40.0	0.8	5.1	37.4	37.7
3823 16	16	250	2000	37.5	42.5	0.8	5.1	39.9	40.2
3823 17	17	250	2000	40.0	45.0	0.8	5.1	42.4	42.7
3823 18	18	250	2000	42.5	47.5	0.8	5.1	44.9	45.2
3823 19	19	250	2000	45.0	50.0	0.8	5.1	47.4	47.7
3823 20	20	250	2000	47.5	52.5	0.8	5.1	49.9	50.2

Designation to be completed by further details (e.g. for keying, color or material options).

Packaging:

in bulk, in a cardboard box