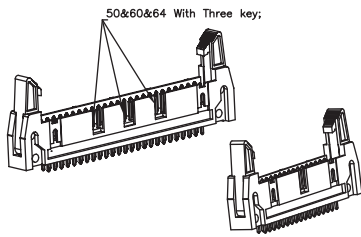


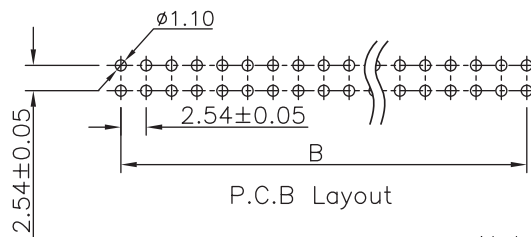
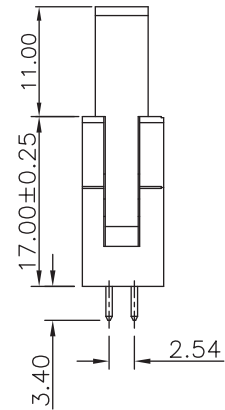
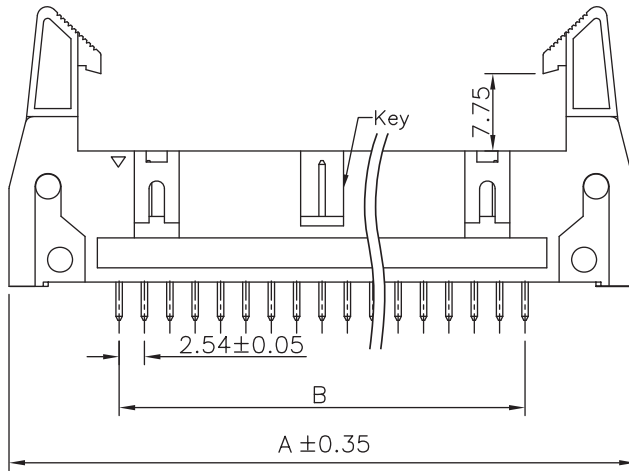
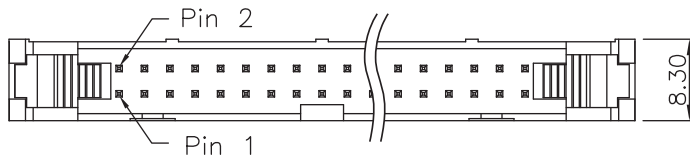
## Pin header



### Technical data:

Insulating material:	High temp. Plastic (Nylon 46, UL 94V-0)
Colour:	Black
Contact material:	Copper Alloy
Plating:	Gold
Rated current:	3 Amp.
Rated voltage:	250 V <sub>AC</sub> /V <sub>DC</sub>
Withstand voltage:	600 V <sub>AC</sub> for one minute
Contact resistance:	20 mOhm max.
Insulation resistance:	1000 MOhm min.
Operating temperature:	-40°C to +105°C
Max. soldering temp.:	260°C for 10 seconds

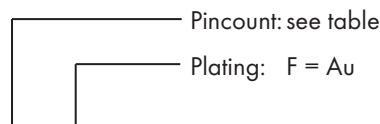
pitch	rows	row distance	orientation	termination
2,54	2	2,54	straight	through hole



### Notes:

No. Of Positions 50–64 With three key;  
All Other Pin With one key.

Pincount	A	B	Pincount	A	B
6	27.12	5.08	26	52.52	30.48
8	29.66	7.62	30	57.60	35.56
10	32.20	10.16	34	62.68	40.64
12	34.74	12.70	40	70.30	48.26
14	37.28	15.24	50	83.00	60.96
16	39.82	17.78	60	95.70	73.66
20	44.90	22.86	64	100.78	78.74
24	49.98	27.94			



Order code:

**092-2-XXX-0-F-KS0**