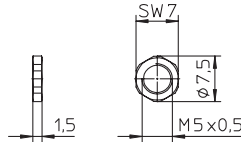


RSKFM 5

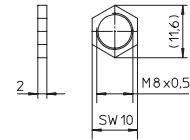
Befestigungsmutter für
M5-Einbaustecker und
-kupplungen
Technische Daten:
Werkstoff: CuZn, vernickelt

Panel nut for M5 male and
female receptacles
Technical data:
Material: CuZn, brass, nickel
plated


RSKF 8

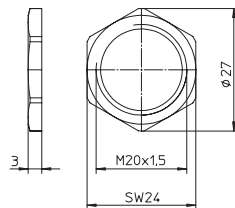
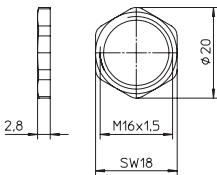
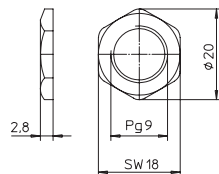
Befestigungsmutter für
M8-Einbaustecker und
-kupplungen
Technische Daten:
Werkstoff: CuZn, vernickelt

Panel nut for M8 male and
female receptacles
Technical data:
Material: CuZn, brass, nickel
plated


RSKF 9
RSKFM 16
RSKFM 20

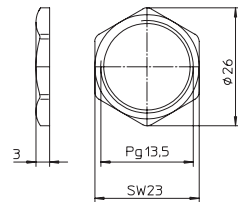
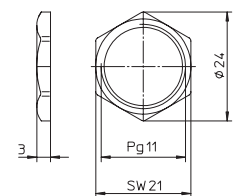
Befestigungsmutter für
M12-Einbaustecker und
-kupplungen
Technische Daten:
Werkstoff: CuZn, vernickelt

Panel nut for M12 male and
female receptacles
Technical data:
Material: CuZn, brass, nickel
plated


RSKF 11
RSKF 13,5

Befestigungsmutter für
7/8"-Einbaustecker und
-kupplungen
Technische Daten:
Werkstoff: CuZn, vernickelt

Panel nut for 7/8" male and
female receptacles
Technical data:
Material: CuZn, brass, nickel
plated


**Bestellbezeichnung
Designation**

RSKFM 5

RSKF 8

RSKF 9

RSKF 11

RSKFM 16

RSKF 13,5

RSKFM 20

