

同步馬達 SYNCHRONOUS MOTOR

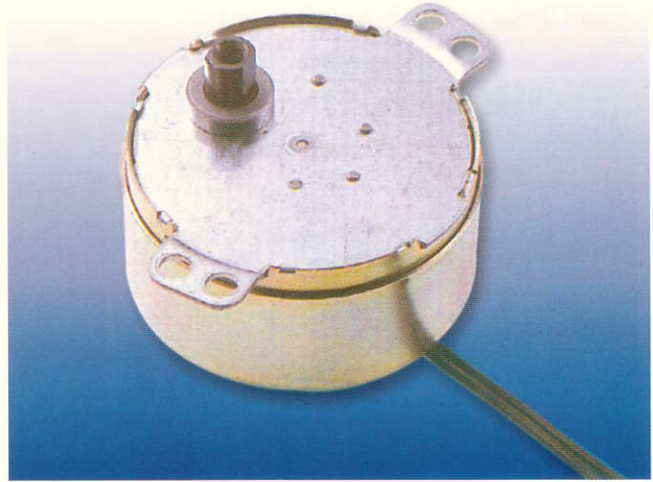
SP

用途

冷暖風扇
家電產品
事務機器
自動控制
舞臺燈
玩具禮品
記錄器
冷氣機
微波爐
護貝機

USAGE

Electric Fans
Household Electrics
Office Machines
Automatic Control Machines
Spotlights
Toys and Presents
Recorders
Air Conditioner
Micro Wave Ovens
Laminator

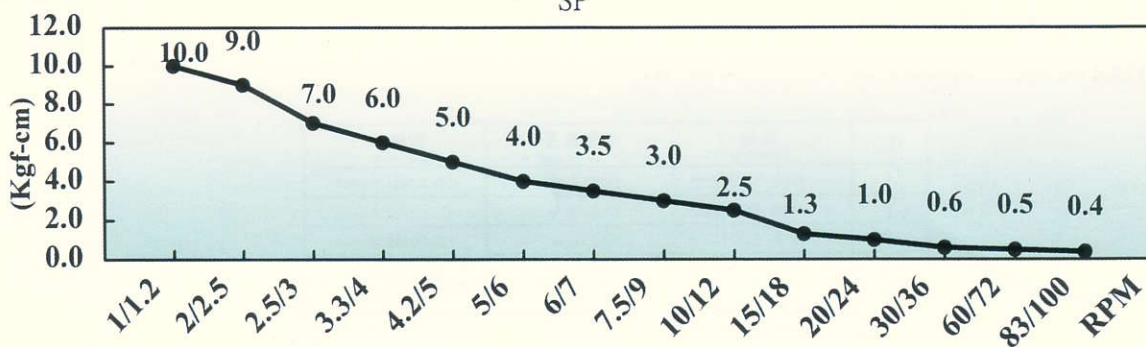


MIN/MAX OPERATING TEMPS -20 +80

IP RATING IP50

特性項目 / Item	規格 / Specifications							單位 / Unit
額定電壓 Rated Voltage	12	24	100	110	120	220	240	VAC
頻率 Power Frequency	50/60							Hz
轉向 Rotation	正轉,反轉,自由轉 CW, CCW, CW/CCW							
轉速 Speed	1/1.2	2/2.5	2.5/3	3.3/4	4.2/5	5/6	6/7	R.P.M
	7.5/9	10/12	15/18	20/24	30/36	60/72	83/100	
制動轉矩 Stall Torque	10.0	9.0	7.0	6.0	5.0	4.0	3.5	kgf-cm
	3.0	2.5	1.3	1.0	0.6	0.5	0.4	
打滑扭力 Frictional Torque	7~10							Kgf-cm
極數 Number of Poles	10							Pole
功率 Input Power	3.8, 4.0							W
耐壓標準 Insulation Strength	AC 1500V-1min 檢出電流 10mA AC 1500V-1min Cut-Off Current : 10mA							-
絕緣等級 Insulation Class	A, E							Class

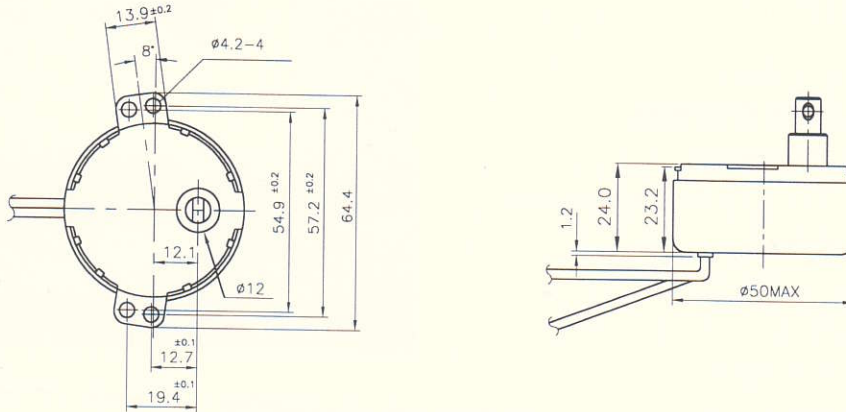
扭力曲線圖 Torque Chart:



同步馬達 SYNCHRONOUS MOTOR

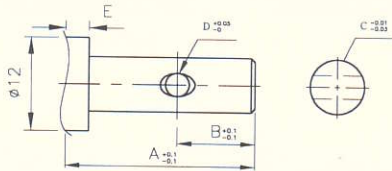
型號 / TYPE : SP

一、外觀尺寸圖 / Dimensions



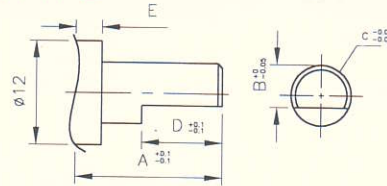
二、出力軸規格 / Shaft Type

A.TYPE



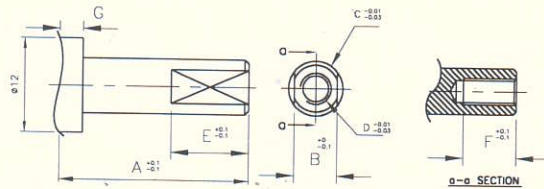
NO.	A	B	C	D	E
1	29.0	3.9	φ7	φ3.05	
2	19.0	4.5	φ7	φ3.05	1.2, 2.2, 4.0, 9.0
3	14.0	5.8	φ7	φ3.05	

B.TYPE



NO.	A	B	C	D	E
1	24.2	5.5	φ7	9.0	1.2, 2.2, 4.0, 9.0
2	17.0	5.0	φ7	12.0	
3	11.0	6.0	φ7	5.5	1.2, 2.2, 4.0

C.TYPE



NO.	A	B	C	D	E	F	G
1	19.0	5.0	φ7	W*0.7	7.5	8.0	1.2, 2.2, 4.0, 9.0
2	14.5	5.5	φ7	W*0.7	9.5	8.0	1.2, 2.2, 4.0
3	9.5	5.6	φ7	5/32"-32BW	5.9	8.0	1.2, 2.2

三、端子規格 / Specification of terminal : JST-SLM-01T-1.3E 引線規格 / Specification of lead wire

NO.	規格 Specification	出線長度 Length of output wire	裸線 Bare wire
1	AWG 1007#22	200 mm	10:10加錫 Tinned
2	AWG 1007#22	450 mm	10:10加錫 Tinned
3	AWG 1007#22	700 mm	10:10加錫 Tinned
4	AWG 1015#22	200 mm	10:10加錫 Tinned
5	AWG 1015#22	450 mm	10:10加錫 Tinned
6	AWG 1015#22	700 mm	10:10加錫 Tinned