

U.I. Lapp GmbH	PRODUCT INFORMATION	
	SKINTOP® CUBE	07.11.2014

Variable range of clamping force
 Vibration-safe module fixation
 Strain relief
 Oil resistance
 Simplified servicing due to easy assembling and disassembling



Wide clamping range



Assembly time



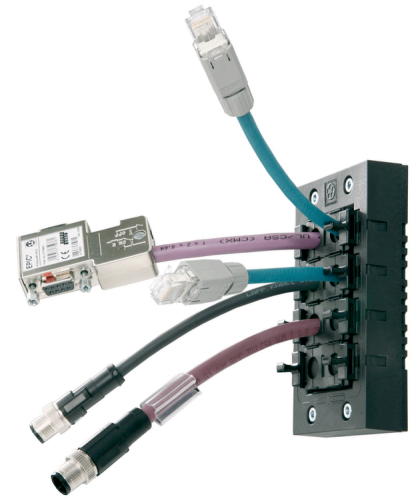
Optimum strain relief



Space requirement



Connector with standard housing unit



Info

Innovative multi-cable bushing system with variable clamping ranges for high flexibility in assembling.
 When disassembling, the frame can remain on the housing and the plug-in module remains securely on the cable.

Application range

For installation of harnessed cables
 Used in areas where cables and wires need to be safely inserted into housings
 Apparatus and switch cabinet construction
 Electronic installations
 Automation technology

Product Make-up

The SKINTOP® CUBE system consists of the SKINTOP® CUBE FRAME and the clip modules SKINTOP® CUBE MODULE.
 For cut-outs for industrial connectors with standard defined boreholes.
 For cut-outs for 16-pin industrial connectors (36 x 86 mm)
 For cut-outs for 24-pin industrial connectors (36 x 112 mm)

Norm references / Approvals

UL File Nr. E349737

Note

SKINTOP® CUBE MODULE 20x20 BLIND can be used as a blind module and for clamping ranges 1 - 3 mm

Included

SKINTOP® CUBE FRAME including mounting material

Remark

Photographs are not to scale and do not represent detailed images of the respective products.

Product Management	Document: LAPP_PRO101967EN.pdf	1 / 4
--------------------	--------------------------------	-------

U.I. Lapp GmbH	PRODUCT INFORMATION	 LAPP GROUP
	SKINTOP® CUBE	07.11.2014

Technical Data

Classification:	ETIM 5.0 Class-ID: EC000240 ETIM 5.0 Class-Description: cable entry
Material:	Frame: glass fibre-reinforced polyamide Frame seal: CR Clip module: special polypropylene Clip module seal: LSE 2
Protection rating:	IP 64 NEMA 12
Temperature range:	Dynamic: -20°C up to +80°C Static: -40°C up to +80°C

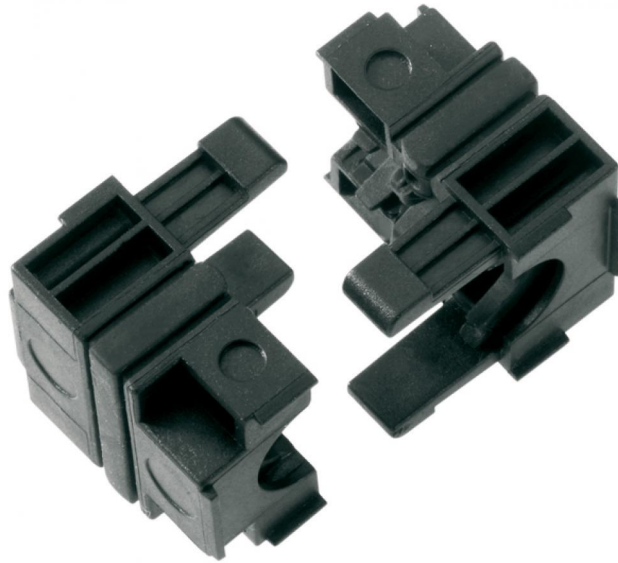
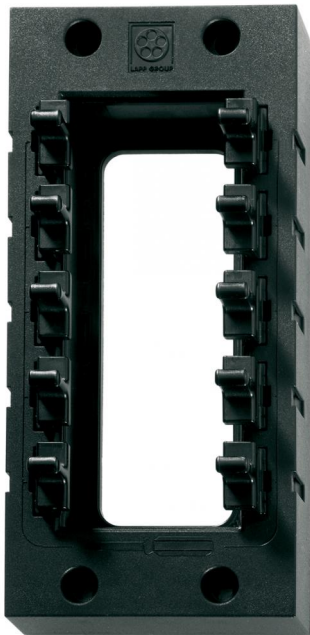
Product Management	Document: LAPP_PRO101967EN.pdf	2 / 4
--------------------	--------------------------------	-------

SKINTOP® CUBE

07.11.2014

Part number	Article designation / size	Clamping range ØF (mm)	Max. number of executions	Pieces / PU
SKINTOP® CUBE Frame				
52220000	SKINTOP® CUBE FRAME 16		8	1
52220001	SKINTOP® CUBE FRAME 24		10	1
SKINTOP® CUBE clip modules				
52220004	SKINTOP® CUBE MODULE 20x20 BLIND	1 - 3		5
52220002	SKINTOP® CUBE MODULE 20x20 SMALL	4 - 6		5
52220003	SKINTOP® CUBE MODULE 20x20 LARGE	6 - 9		5
52220040	SKINTOP® CUBE MODULE 20x20 AS-I BUS			5
52220005	SKINTOP® CUBE MODULE 40x40 SMALL	9 - 12		5
52220006	SKINTOP® CUBE MODULE 40x40 LARGE	12 - 16		5
52220007	SKINTOP® CUBE MODULE 40x40 BLIND			5

U.I. Lapp GmbH	PRODUCT INFORMATION	 LAPP GROUP
	SKINTOP® CUBE	07.11.2014



Product Management	Document: LAPP_PRO101967EN.pdf	4 / 4
--------------------	--------------------------------	-------