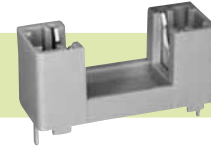


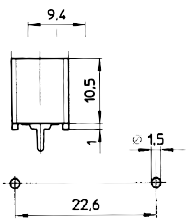
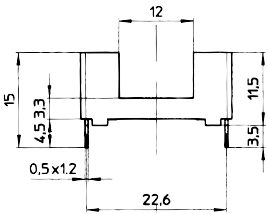
Type  
**199018**



Type  
**199019**



199018



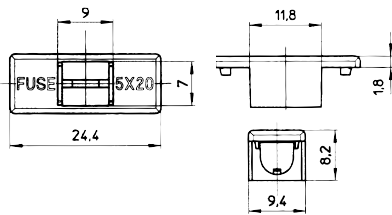
**G-Sicherungshalter für G-Sicherungseinsätze 5 x 20 mm / Fuse-Holder (Fuse-Blocks) for miniature Fuse-Links 5 x 20 mm**

Bemessungsspannung / rated voltage 250 V  
Bemessungsstrom / rated current 6,3 A  
Bemessungsleistung / rated power 1,6 W

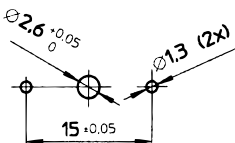
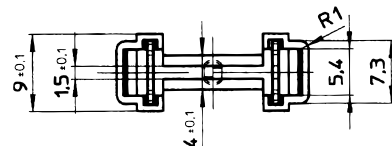
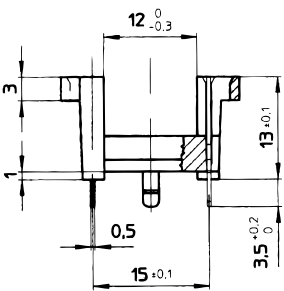
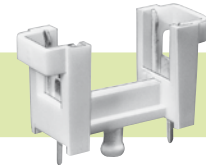
Montage / mounting Leiterplatte / printed circuit board  
Stiftabstand / pin distance 22,5 mm  
Bohrungen / hole Ø 1,5 mm  
Anschlüsse / connections lötfar / solderable

Abdeckung / cover 199019  
Thermoplast, grün / thermoplastic, green

199019



Type  
**199060**



**G-Sicherungshalter für G-Sicherungseinsätze 5 x 20 mm / Fuse-Holder (Fuse-Blocks) for miniature Fuse-Links 5 x 20 mm**

Bemessungsspannung / rated voltage 250 V  
Bemessungsstrom / rated current 6,3 A  
Bemessungsleistung / rated power 1,6 W

Montage / mounting Leiterplatte / printed circuit board  
Stiftabstand / pin distance 15 mm  
Bohrungen / hole Ø 1,3/2,6 mm  
Anschlüsse / connections lötfar / solderable