

UFTG100-12

12V 100AH

Front Terminal

UFTG100-12



Physical Specification

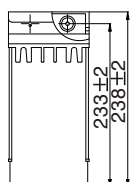
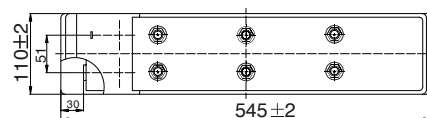
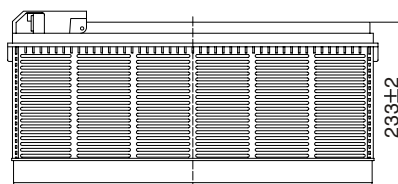
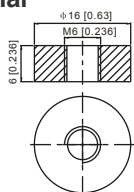
Part Number	UFTG100-12
Length	545 ± 2 mm
Width	110 ± 2 mm
Container Height	233 ± 2 mm
Total Height (with terminal)	233 ± 2 mm
Approx Weight	32.3 kg

Specifications

	Nominal Voltage	12V
	Nominal Capacity (20HR)	90.0AH
Terminal Type	Standard Terminal	F6
Container Material	Standard Option	ABS
Rated Capacity	20hr, 1.80V/cell, 25°C	90.0 AH/4.5A
	10hr, 1.80V/cell, 25°C	85.0 AH/8.5A
	5hr, 1.75V/cell, 25°C	74.5 AH/14.9A
	3hr, 1.75V/cell, 25°C	64.8 AH/21.6A
	1hr, 1.60V/cell, 25°C	49.1 AH/49.1A
Max Discharge Current	900A (5s)	
Internal Resistance	Approx 5.6m Ω	
Discharge Characteristics	Operating Temp. Range	Discharge: -20°C~55°C
		Charge: 0°C~40°C
		Storage: -20°C~55°C
	Nominal Operating Temp. Range	25±3°C
	Cycle Use	Initial Charging Current less than 22.5A. Voltage 14.4V ~ 15V at 25°C Temp. Coefficient -30mV/°C
	Standby Use	No limit on Initial Charging Current. Voltage 13.5V ~ 13.8V at 25°C Temp. Coefficient -20mV/°C
	Capacity affect by Temperature	40°C 103% 25°C 100% 0°C 86%
Design Floating Life at 20°C	12+ Years	
Self Discharge	Ultracell batteries may be stored for up to 6 months at 25°C(77°F) and then a refresh charge is required. For higher temperatures the time interval will be shorter.	

Dimensions

F6 Terminal



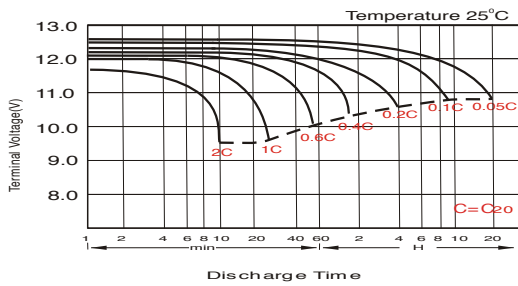
Constant Current Discharge (Amperes) at 25°C

F.V/Time	20min	30min	45min	1h	2h	3h	4h	5h	6h	7h	8h	9h	10h	20h
1.85V/cell	71.1	55.8	42.6	35.6	25.0	19.1	15.8	13.6	11.7	10.4	9.37	8.57	8.14	4.32
1.80V/cell	81.4	62.4	46.9	39.3	27.1	20.4	16.8	14.3	12.3	10.9	9.82	9.01	8.50	4.50
1.75V/cell	91.5	68.6	50.8	42.1	28.7	21.6	17.5	14.9	12.8	11.3	10.1	9.28	8.67	4.59
1.70V/cell	98.6	73.4	53.9	44.5	30.4	22.5	18.1	15.4	13.2	11.6	10.4	9.52	8.87	4.65
1.67V/cell	102.6	76.3	55.8	46.2	31.2	23.2	18.6	15.7	13.4	11.8	10.6	9.65	8.98	4.69
1.60V/cell	111.2	81.7	59.9	49.1	32.5	24.1	19.3	16.2	13.7	12.1	10.8	9.85	9.15	4.76

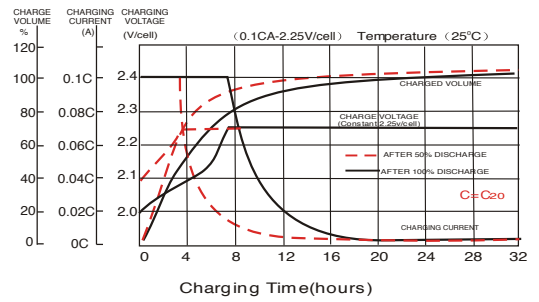
Constant Power Discharge (Watts) at 25°C

F.V/Time	20min	30min	45min	1h	2h	3h	4h	5h	6h	7h	8h	9h	10h	20h
1.85V/cell	136.1	107.5	82.6	69.4	48.9	37.4	31.1	26.9	23.2	20.6	18.6	17.1	16.2	8.62
1.80V/cell	153.8	119.0	90.2	76.2	52.7	39.9	32.8	28.2	24.3	21.5	19.5	17.9	16.9	8.97
1.75V/cell	171.0	129.5	96.6	81.1	55.7	42.1	34.3	29.2	25.1	22.2	20.1	18.4	17.2	9.14
1.70V/cell	182.2	137.7	102.2	85.5	58.7	43.7	35.3	30.0	25.9	22.9	20.6	18.9	17.6	9.25
1.67V/cell	187.5	141.2	104.9	88.0	60.0	44.9	36.1	30.5	26.3	23.2	20.9	19.1	17.8	9.33
1.60V/cell	200.9	150.1	112.1	93.0	62.1	46.5	37.3	31.4	26.8	23.6	21.2	19.5	18.1	9.45

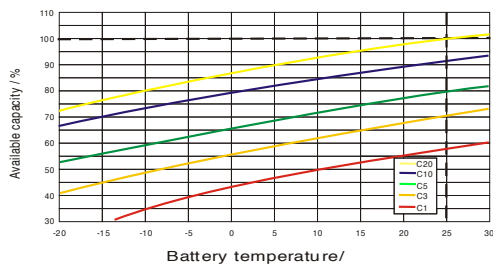
Discharge Characteristics



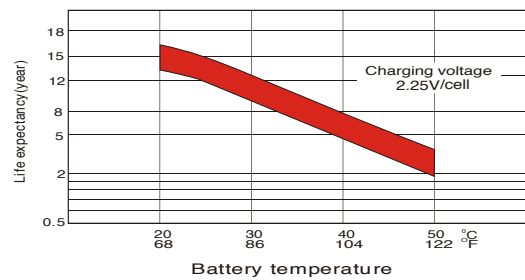
Charging Characteristics



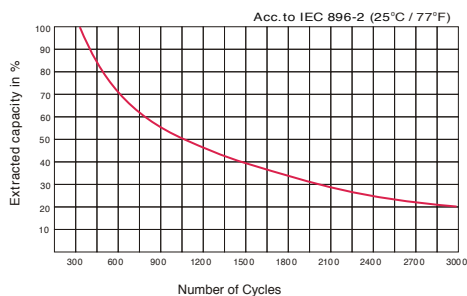
Temperature Effects in Relation to Battery Capacity



Effect of Temperature on Long Term Float Life



Cycle Life in Relation to Depth of Discharge



General Relation of Capacity VS. Storage Time

