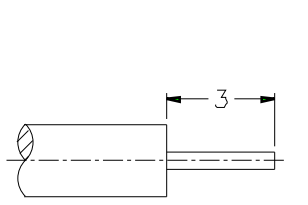
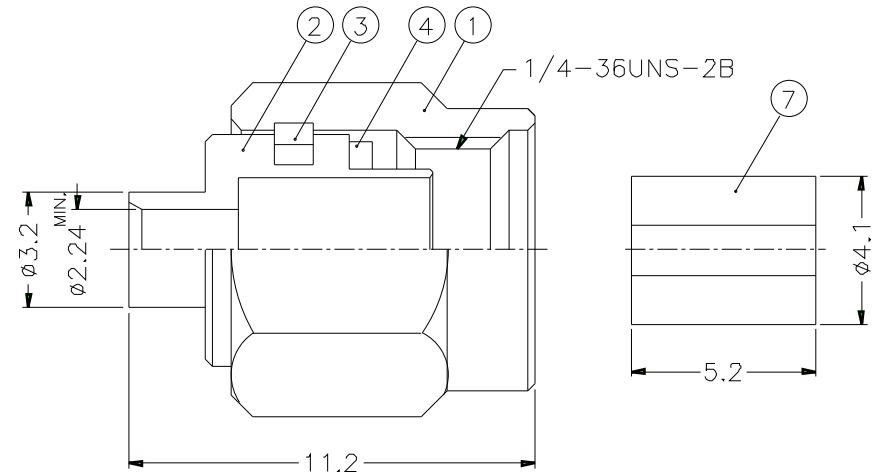
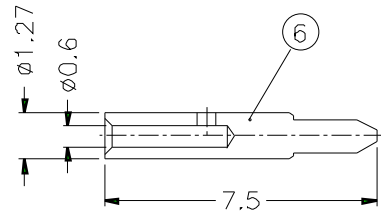
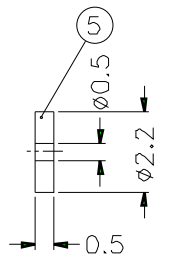


1			2			3			4			5			6			7			8		
REVISIONS																							
ISS	ZONE	DESCRIPTION\PER REQUEST\DATE																					



RECOMMENDED
CABLE STRIPPING DIM'S



NOTES. FINISH (PLATING THICKNESS IN MICRO-INCHES)

1. BRASS PER QQ-B-626
2. GOLD PL. 3 MIN. THICK OVER NICKEL PL. 100 MIN. THICK OVER COPPER STRIKE
3. GOLD PL. 50 MIN. THICK OVER NICKEL PL. 100 MIN. THICK OVER COPPER STRIKE
4. BERYLLIUM COPPER PER QQ-C-530
5. TEFLON MIL-P-19468

7	INSULATOR	NOTE 5	NATURAL	1	SMA5081-5T-50
6	CONTACT PIN	NOTE 1	NOTE 3	1	SMA5081-6-127/06
5	INSULATOR	NOTE 5	NATURAL	1	SMA1181A2-5T-50
4	GASKET	SILICONE	RED	1	GS-6/43X06
3	RETAINER RING	NOTE 4	NATURAL	1	SMA5000-4-B
2	BODY	NOTE 1	NOTE 2	1	SMA5081-2-32/224-A
1	SHELL	NOTE 1	NOTE 2	1	SMA5000-1-C
NO.	DESCRIPTION	MATERIAL	FINISH	Q'TY	DRAWING NO.

DIMENSIONS ARE IN MILLIMETERS			
UNLESS OTHERWISE SPECIFIED TOLERANCES			
0.5-6	=	±0.2	
6-30	=	±0.4	
30-120	=	±0.6	
120-315	=	±1	
315-1000	=	±1.6	
1000-2000	=	±2.4	

PART NO.	SMA1181A2-3GT50G-11-50		
APPROVED	DATE	10-11-01'	
CHECKED	DATE	10-11-01'	
DRAWN	DATE	10-11-01'	
FILE NO			

Amphenol	
TITLE	SMA SEMI-RIGID PLUG (FOR .085", .086")
DRAWING NO.	KJ-SMA1181A2-3GT50G-.085-50
ITEM NO.	

1			2			3			4			5			6			7			8		
---	--	--	---	--	--	---	--	--	---	--	--	---	--	--	---	--	--	---	--	--	---	--	--