

Surface Mount Frequency Mixer

RMS-30+

Level 7 (LO Power +7 dBm) 200 to 3000 MHz



Generic photo used for illustration purposes only

CASE STYLE: TT240

+RoHS Compliant

The +Suffix identifies RoHS Compliance. See our web site for RoHS Compliance methodologies and qualifications

Maximum Ratings

Operating Temperature	-40°C to 85°C
Storage Temperature	-55°C to 100°C
RF Power	200mW
IF Current	40mA
Permanent damage may occur if any of these limits are exceeded.	

Pin Connections

LO	1
RF	4
IF	5
GROUND	2,3,6

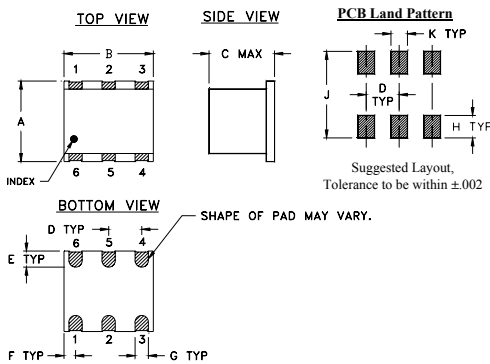
Features

- wideband, 200-3000 MHz
- conversion loss, 7.0 dB typ.
- small size, 0.25"x0.31"x0.2"

Applications

- MMDS
- ISM/PCS/UMTS
- GPS

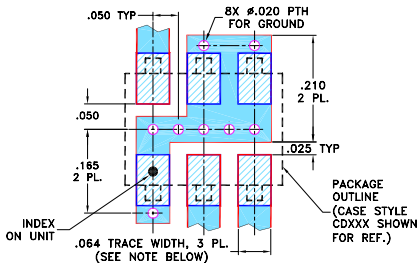
Outline Drawing



Outline Dimensions (inch/mm)

A	B	C	D	E	F	
.250	.31	.20	.100	.050	.055	
6.35	7.87	5.08	2.54	1.27	1.40	
G	H	J	K			wt
.040	.070	.270	.050			grams
1.02	1.78	6.86	1.27			0.50

Demo Board MCL P/N: TB-03
Suggested PCB Layout (PL-052)



- NOTES:
1. TRACE WIDTH IS SHOWN FOR ROGERS RO4350B WITH DIELECTRIC THICKNESS .030" ± .002"; COPPER: 1/2 OZ. EACH SIDE. FOR OTHER MATERIALS TRACE WIDTH MAY NEED TO BE MODIFIED.
 2. BOTTOM SIDE OF THE PCB IS CONTINUOUS GROUND PLANE.

- DENOTES PCB COPPER LAYOUT WITH SMOBC (SOLDER MASK OVER BARE COPPER)
- DENOTES COPPER LAND PATTERN FREE OF SOLDER MASK

Notes

- A. Performance and quality attributes and conditions not expressly stated in this specification document are intended to be excluded and do not form a part of this specification document.
- B. Electrical specifications and performance data contained in this specification document are based on Mini-Circuit's applicable established test performance criteria and measurement instructions.
- C. The parts covered by this specification document are subject to Mini-Circuit's standard limited warranty and terms and conditions (collectively, "Standard Terms"); Purchasers of this part are entitled to the rights and benefits contained therein. For a full statement of the Standard Terms and the exclusive rights and remedies thereunder, please visit Mini-Circuit's website at www.minicircuits.com/MCLStore/terms.jsp

Electrical Specifications

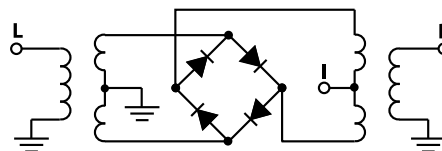
FREQUENCY (MHz)	CONVERSION LOSS (dB)	LO-RF ISOLATION (dB)		LO-IF ISOLATION (dB)		IP3 at center band (dBm)
		Typ.	Min.	Typ.	Min.	
200-3000	DC-1000	27	17	20	7	11

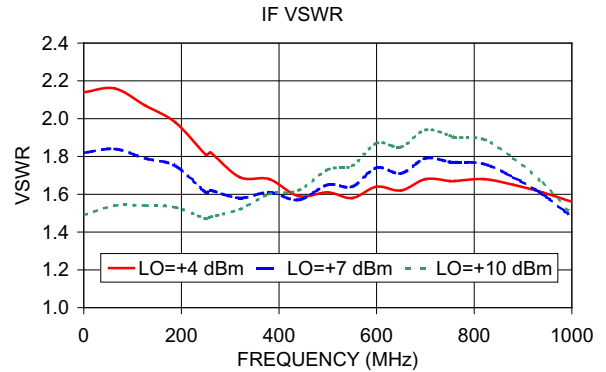
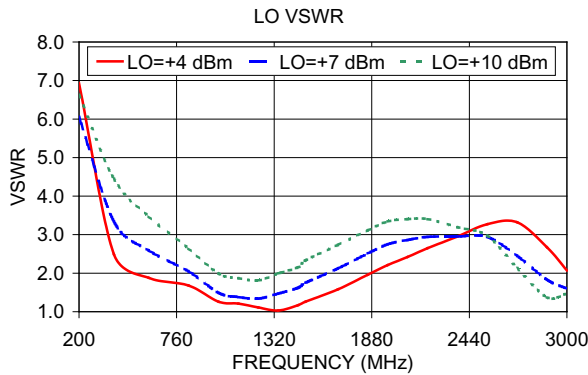
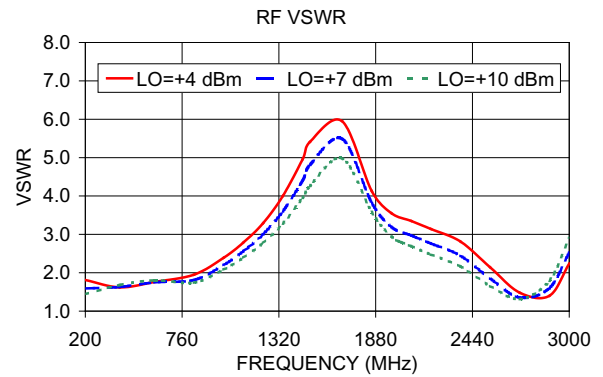
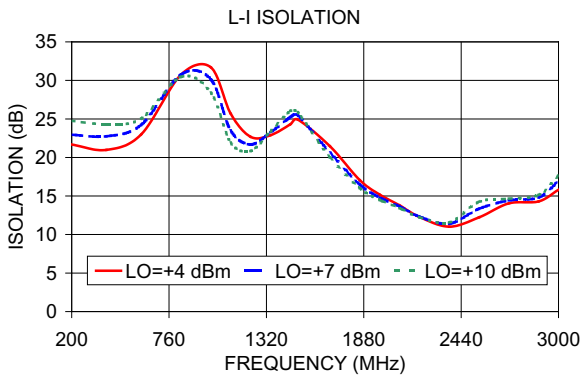
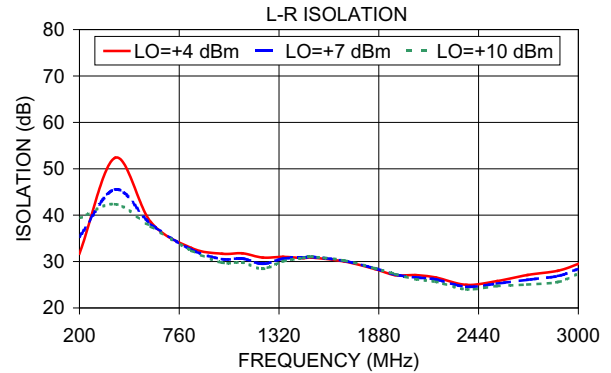
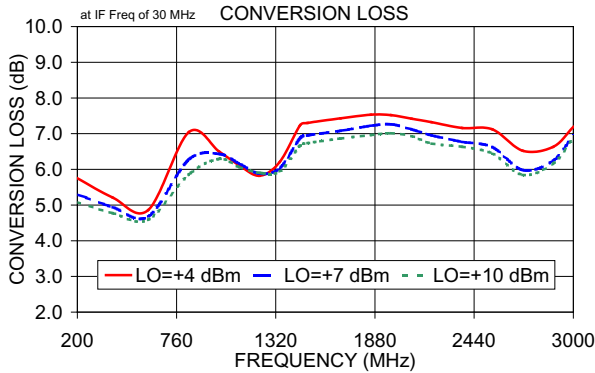
1 dB COMP: +1 dBm typ.
m=mid band [2f_L to f_H/2]
For phase detection, DC output positive with in-phase RF & LO.

Typical Performance Data

Frequency (MHz)		Conversion Loss (dB)	Isolation L-R (dB)	Isolation L-I (dB)	VSWR RF Port (:1)	VSWR LO Port (:1)
RF	LO	LO +7 dBm	LO +7 dBm	LO +7 dBm	LO +7 dBm	LO +7 dBm
200.10	230.10	5.30	35.34	22.95	1.59	6.06
400.10	430.10	4.94	45.55	22.74	1.63	3.34
600.09	630.09	4.68	38.09	24.23	1.75	2.59
828.65	858.65	6.27	32.57	30.75	1.81	2.05
1000.07	1030.07	6.43	30.53	30.13	2.20	1.49
1114.35	1144.35	6.16	30.64	23.50	2.56	1.38
1228.63	1258.63	5.88	29.50	21.69	3.00	1.34
1342.92	1372.92	6.03	30.63	23.23	3.60	1.47
1457.20	1487.20	6.87	30.80	25.21	4.40	1.62
1500.00	1530.00	6.95	31.01	25.49	4.81	1.75
1685.76	1655.76	7.08	30.14	20.62	5.49	2.12
1857.18	1827.18	7.22	28.52	16.49	3.82	2.51
1971.47	1941.47	7.26	27.20	14.81	3.19	2.75
2085.75	2055.75	7.12	26.56	13.64	2.97	2.86
2200.03	2170.03	6.95	26.14	12.33	2.76	2.94
2371.45	2341.45	6.77	24.57	11.40	2.44	2.95
2542.87	2512.87	6.62	25.24	13.33	1.85	2.94
2714.30	2684.30	5.98	26.06	14.42	1.35	2.45
2885.72	2855.72	6.24	26.86	14.79	1.60	1.83
3000.00	2970.00	6.95	28.42	16.91	2.52	1.60

Electrical Schematic





Notes

- A. Performance and quality attributes and conditions not expressly stated in this specification document are intended to be excluded and do not form a part of this specification document.
- B. Electrical specifications and performance data contained in this specification document are based on Mini-Circuit's applicable established test performance criteria and measurement instructions.
- C. The parts covered by this specification document are subject to Mini-Circuits standard limited warranty and terms and conditions (collectively, "Standard Terms"); Purchasers of this part are entitled to the rights and benefits contained therein. For a full statement of the Standard Terms and the exclusive rights and remedies thereunder, please visit Mini-Circuits' website at www.minicircuits.com/MCLStore/terms.jsp

