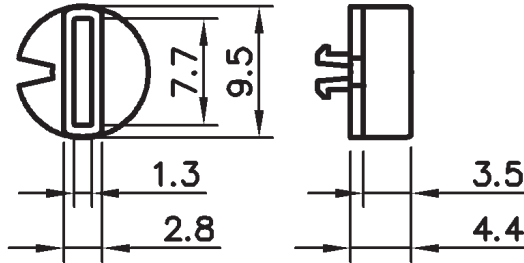
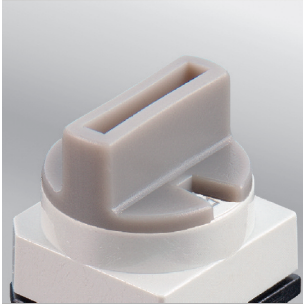


# Zusatzbetätiger

für Kreuzschlitzaufnahme

## 1 Segmentschaltrad / Segment wheel



bei P60, P70, PT65, P65

Bei Reflowlötung Betätiger erst nach dem Lötvorgang anbringen.

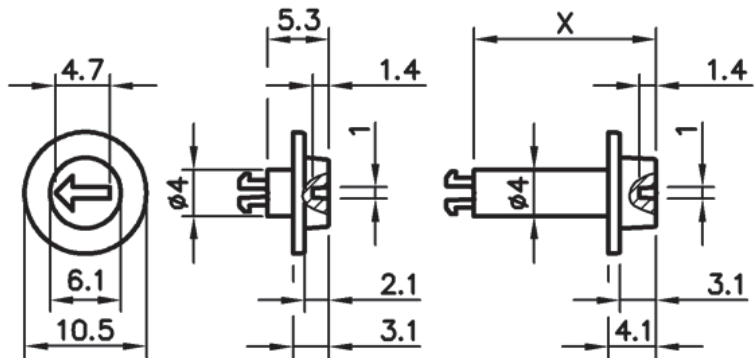
of P60, P70, PT65, P65

For reflow soldering only to be fitted after the soldering process.

## 2 FARBE / COLOUR

grau / grey	Standard	Code: SR-PT65 9,5/4,4 <b>grau</b>
schwarz / black		Code: SR-PT65 9,5/4,4 <b>schwarz</b>
gelb / yellow		Code: SR-PT65 9,5/4,4 <b>gelb</b>
rot / red		Code: SR-PT65 9,5/4,4 <b>rot</b>
grün / green		Code: SR-PT65 9,5/4,4 <b>grün</b>
blau / blue		Code: SR-PT65 9,5/4,4 <b>blau</b>

## 1 Drehknopf / Knob



bei P60, P70, PT65, P65

Bei Reflowlötung Betätiger erst nach dem Lötvorgang anbringen.

of P60, P70, PT65, P65

For reflow soldering only to be fitted after the soldering process.

## 2 LÄNGE / LENGTH

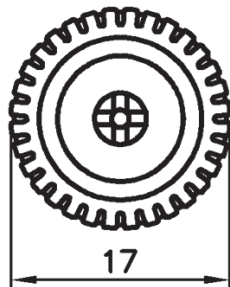
5,3mm	Code: DK-PT65 10,5/ <b>5,3</b>
15,7mm	Code: DK-PT65 10,5/ <b>15,7</b>
29,1mm	Code: DK-PT65 10,5/ <b>29,1</b>
34,4mm	Code: DK-PT65 10,5/ <b>34,4</b>

## FARBE / COLOUR

rot / red

Standard

# 1 Drehrad / Wheel



# Auxiliary actuators for cross shaped slot

bei PT65, P65

Bei Reflowlötung Betätiger erst nach dem Lötvorgang anbringen.

of PT65, P65

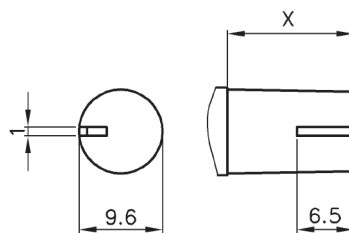
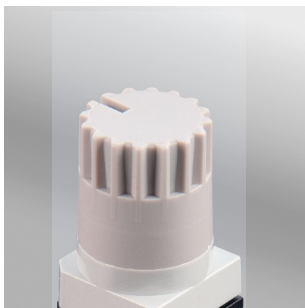
For reflow soldering only to be fitted after the soldering process.

## FARBE / COLOUR

weiß (Bedruckung auf Anfrage) / white (printing on request) Standard

Code: DR-PT65 17

# 1 Drehachse / Rotary axle



bei P60, P70, PT65, P65

Bei Reflowlötung Betätiger erst nach dem Lötvorgang anbringen.

of P60, P70, PT65, P65

For reflow soldering only to be fitted after the soldering process.

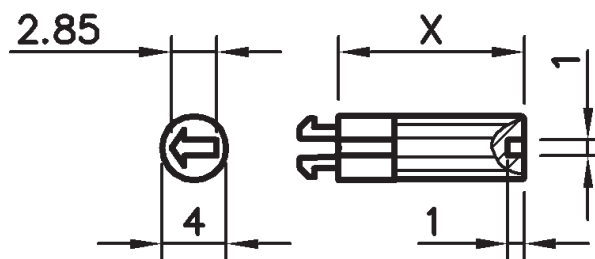
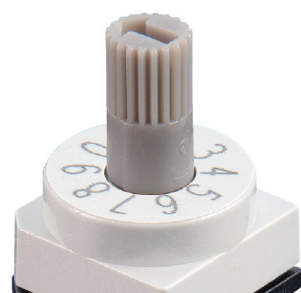
## 2 LÄNGE / LENGTH

9,5mm	Code: DA-PT65 9,6/ <b>9,5</b>
14,5mm	Code: DA-PT65 9,6/ <b>14,5</b>
19,0mm	Code: DA-PT65 9,6/ <b>19,0</b>

## FARBE / COLOUR

grau / grey Standard

# 1 Schaltachse / Spindle



bei P60, P70, PT65, P65

Bei Reflowlötung Betätiger erst nach dem Lötvorgang anbringen.

of P60, P70, PT65, P65

For reflow soldering only to be fitted after the soldering process.

## 2 LÄNGE / LENGTH

7,3mm	Code: SA-PT65 4/ <b>7,3</b> 3
11,6mm	Code: SA-PT65 4/ <b>11,6</b> 3
13,3mm	Code: SA-PT65 4/ <b>13,3</b> 3

## 3 FARBE / COLOUR

grau / grey	Code: SA-PT65 4/ 2 <b>grau</b>
schwarz / black	Code: SA-PT65 4/ 2 <b>schwarz</b>
rot / red	Code: SA-PT65 4/ 2 <b>rot</b>