



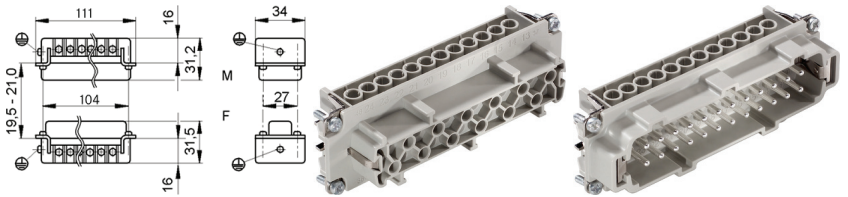
### EPIC® H-BE 24 screw connection

The tried-and-tested standard inserts for easy assembly



**Info**

- Tried-and-tested screw connection for easy installation
- Screw, crimp, cage clamp and Push-In



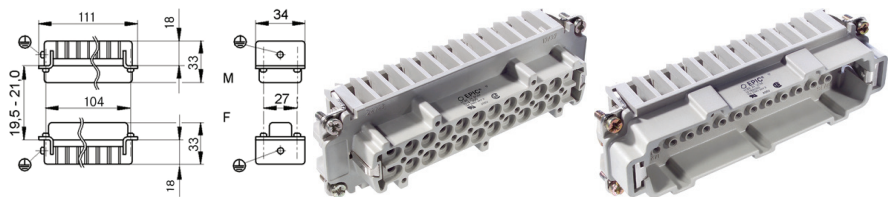
### EPIC® H-BE 24 crimp termination

The tried-and-tested standard inserts for easy assembly



**Info**

- For conductor connection up to 4 mm<sup>2</sup>
- Screw, crimp, cage clamp and Push-In version - freely combinable



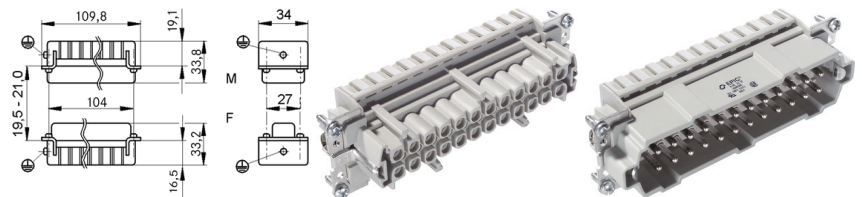
### EPIC® H-BE 24 cage clamp

The tried-and-tested standard inserts for easy assembly



**Info**

- Multifunctional insert for versatile applications
- Screw, crimp, cage clamp and Push-In



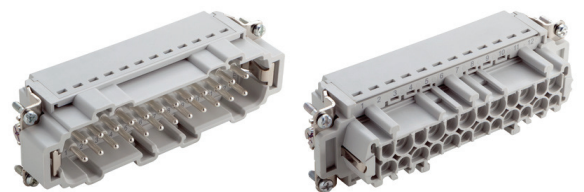
### EPIC® H-BE 24 push-in connection

The tried-and-tested standard inserts for easy assembly



**Info**

- Push-in version fast and easy tool-free connection technology
- Screw, crimp, cage clamp and Push-In



**Suitable housing**

- EPIC® QUICK & EASY Mounting system Page [P118567]
- EPIC® ULTRA H-B 24 TS QB Page [P178479]
- EPIC® ULTRA H-B 24 AG QB Page [P178480]
- EPIC® Docking Frame Page [P300883]
- EPIC® H-B 24 TG-RO Page [P451]
- EPIC® H-B 24 TGH-RO Page [P452]
- EPIC® H-B 24 TS-RO Page [P453]
- EPIC® H-B 24 TSH-RO Page [P454]
- EPIC® H-B 24 TG Page [P455]
- EPIC® H-B 24 TG 2X Page [P116371]
- EPIC® H-B 24 TGH Page [P456]
- EPIC® H-B 24 TGH 2X Page [P116373]
- EPIC® H-B 24 TGB Page [P457]
- EPIC® H-B 24 TGBH Page [P458]
- EPIC® H-B 24 TS Page [P459]
- EPIC® H-B 24 TSH Page [P460]
- EPIC® H-B 24 TSB Page [P461]
- EPIC® H-B 24 TSBH Page [P462]
- EPIC® H-B 24 AG-LB Page [P463]
- EPIC® H-B 24 AD-LB Page [P464]
- EPIC® H-B 24 AG Page [P465]
- EPIC® H-B 24 AD-BO Page [P466]
- EPIC® H-B 24 SGR-LB Page [P611]
- EPIC® H-B 24 SGRL-LB Page [P612]
- EPIC® H-B 24 SGRH-LB Page [P934]
- EPIC® H-B 24 SGRLH-LB Page [P935]
- EPIC® H-B 24 SDR-LB Page [P936]
- EPIC® H-B 24 SDRL-LB Page [P937]
- EPIC® H-B 24 SDRH-LB Page [P938]
- EPIC® H-B 24 SDRLH-LB Page [P939]
- EPIC® H-B 24 SGR Page [P940]
- EPIC® H-B 24 SGRL Page [P941]
- EPIC® H-B 24 SGRH Page [P942]
- EPIC® H-B 24 SGRLH Page [P943]
- EPIC® H-B 24 SDR-BO Page [P944]
- EPIC® H-B 24 SDRL-BO Page [P945]
- EPIC® H-B 24 SDRH-BO Page [P946]
- EPIC® H-B 24 SDRLH-BO Page [P947]
- EPIC® H-B 24 TBF-LB Page [P948]
- EPIC® H-B 24 TBFH-LB Page [P949]
- EPIC® H-B 24 TBF Page [P950]
- EPIC® H-B 24 TBFH Page [P951]
- EPIC® H-B 24 TSH-ZB Page [P952]
- EPIC® H-B 24 AG-ZR Page [P953]
- Refer to selection table A10 for help selecting inserts and housing

**Suitable contacts:**

**EPIC® H-BE 24 crimp termination**

- EPIC® H-BE 2.5 machined contacts Page [P552]

**Similar products**

**EPIC® H-BE 24 screw connection**

- Other products with higher numbering online. (H-BE 32, H-BE 48)

**EPIC® H-BE 24 crimp termination**

- Other products with higher numbering online. (H-BE 32, H-BE 48)

**EPIC® H-BE 24 cage clamp**

- Other products with higher numbering online. (H-BE 32, H-BE 48)

**Benefits**

**EPIC® H-BE 24 screw connection**

- Railway applications
  - Fire protection on railway vehicles: Test according to EN 45545-2. Requirement

**Technical data**



**Classification**

ETIM 5.0 Class-ID: EC000438  
ETIM 5.0 Class-Description: Contact insert for industrial connectors



**Rated voltage (V)**

IEC: 500 VUL: 600 VCSA: 600 V

**Rated impulse voltage**

6 kV



**Rated current in A**

**EPIC® H-BE 24 screw connection**

IEC: 16 A

UL: 16 A

CSA: 16 A

**EPIC® H-BE 24 crimp termination**

IEC: 16 A

UL: 16 A

CSA: 16 A

**EPIC® H-BE 24 cage clamp**

IEC: 16 A

UL: 16 A

CSA: 16 A

**EPIC® H-BE 24 push-in connection**

IEC: 16 A

UL: 13 A

CSA: 13 A



**Pollution degree**

3



**Flammability**

**EPIC® H-BE 24 screw connection**

UL94 V-0

**EPIC® H-BE 24 crimp termination**

UL94 V-0

**EPIC® H-BE 24 cage clamp**

UL94 V-2

**EPIC® H-BE 24 push-in connection**

UL94 V-0

**Contact resistance**

**EPIC® H-BE 24 screw connection**

< 2 mOhm

**EPIC® H-BE 24 crimp termination**

< 2 mOhm

**EPIC® H-BE 24 cage clamp**

1.5 4 mOhm

**EPIC® H-BE 24 push-in connection**

< 2 mOhm



**Contacts**

**EPIC® H-BE 24 screw connection**

Copper alloy, hard silver-plated

**EPIC® H-BE 24 crimp termination**

Copper alloy, hard silver-plated/hard gold-plated

**EPIC® H-BE 24 cage clamp**

Copper alloy, hard silver-plated

**EPIC® H-BE 24 push-in connection**

Copper alloy, hard silver-plated



**Number of contacts**

24 + PE



**Cable connection**

**EPIC® H-BE 24 screw connection**

Screw connection: 0.5 2.5 mm<sup>2</sup>

**EPIC® H-BE 24 crimp termination**

Crimp termination: 0.5 4.0 mm<sup>2</sup>

**EPIC® H-BE 24 cage clamp**

Cage clamp terminal: 0.5 2.5 mm<sup>2</sup>

**EPIC® H-BE 24 push-in connection**

Push-in connection: 0.14 2.5mm<sup>2</sup>

**Stripping length (mm)**

**EPIC® H-BE 24 screw connection**

8

**EPIC® H-BE 24 cage clamp**

7

**EPIC® H-BE 24 push-in connection**

10



**Material**

**EPIC® H-BE 24 screw connection**

PC polycarbonate

**EPIC® H-BE 24 push-in connection**

PA Polyamid



**Plug cycles**

100



**Certifications**

**EPIC® H-BE 24 screw connection**

Certified production control: VDE reg. no.: B437

UL-tested:

UL file number: E75770 and E483837

**EPIC® H-BE 24 crimp termination**

Certified production control: VDE reg. no.: B437

UL-tested:

UL file number: E75770

**EPIC® H-BE 24 cage clamp**

UL-tested:

UL file number: E75770

**EPIC® H-BE 24 push-in connection**

UL-tested:

UL file number: E75770



**Temperature range**

-40 °C to +100 °C, short-term up to +125 °C

| Article number                     | Article description | Contact type | Wire protection | Number of working contacts | Pieces / PU |
|------------------------------------|---------------------|--------------|-----------------|----------------------------|-------------|
| <b>H-BE 24 screw connection</b>    |                     |              |                 |                            |             |
| 10196000                           | EPIC® H-BE 24 SS    | male         | yes             | 1 - 24                     | 5           |
| 10197000                           | EPIC® H-BE 24 BS    | female       | yes             | 1 - 24                     | 5           |
| 10196100                           | EPIC® H-BE 24 SS    | male         |                 | 1 - 24                     | 5           |
| 10197100                           | EPIC® H-BE 24 BS    | female       |                 | 1 - 24                     | 5           |
| <b>H-BE 24 crimp termination</b>   |                     |              |                 |                            |             |
| 10186000                           | EPIC® H-BE 24 SCM   | male         |                 | 1 - 24                     | 5           |
| 10187000                           | EPIC® H-BE 24 BCM   | female       |                 | 1 - 24                     | 5           |
| <b>H-BE 24 cage clamp terminal</b> |                     |              |                 |                            |             |
| 10400300                           | EPIC® H-BE 24 SF    | male         | yes             | 1 - 24                     | 5           |
| 10401300                           | EPIC® H-BE 24 BF    | female       | yes             | 1 - 24                     | 5           |
| <b>H-BE 24 push-in connection</b>  |                     |              |                 |                            |             |
| 44423206                           | EPIC® H-BE 24 SP    | male         | yes             | 1 - 24                     | 5           |
| 44423207                           | EPIC® H-BE 24 BP    | female       | yes             | 1 - 24                     | 5           |

Photographs are not to scale and do not represent detailed images of the respective products.

**Similar products**

**EPIC® H-BE 24 screw connection**

- Other products with higher numbering online. (H-BE 32, H-BE 48)

**EPIC® H-BE 24 crimp termination**

- Other products with higher numbering online. (H-BE 32, H-BE 48)

**EPIC® H-BE 24 cage clamp**

- Other products with higher numbering online. (H-BE 32, H-BE 48)