

1T/1U/1V

Square, round and half-ellipse shaped caps •
for navigation unit • front panel sealing option



DISTINCTIVE FEATURES

1T: 10.6 x 10.6; 1U: Ø10.6; 1V: 10.4 x 13.25 mm

h=14.9 mm

Rounded top surface

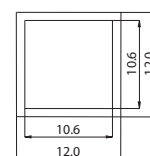
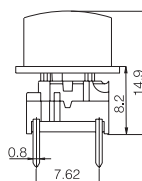
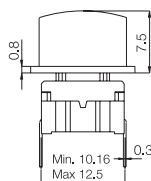
Front panel seal options to IP67 - 1U or IP65 - 1T & 1V

Can be combined for a navigation unit

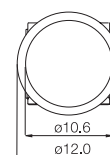
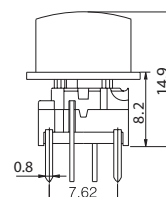
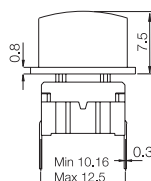


SWITCH SPECIFICATIONS : see Multimec® 3 series.

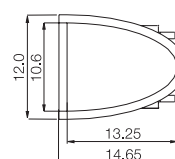
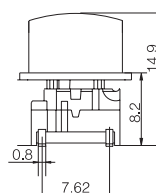
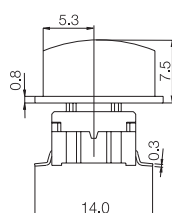
3F+1T - TH



3F+1U - TH - W/LED



3F+1V - SMD



The company reserves the right to change specifications without notice. All tolerance if not otherwise specified ±0.2mm.

1T/1U/1V

Square, round and half-ellipse shaped caps •
for navigation unit • front panel sealing option



BUILD YOUR PART NUMBER

ILLUMINATED

3F

SERIES

MOUNTING

TH9	through-hole
-----	--------------

LED

00	blue
20	green
40	yellow
65	white
80	red
2040	green/yellow
8020	red/green
8040	red/yellow

CAP

1T
1U
1V

COLOR

16	frosted white
----	---------------

NON-ILLUMINATED

3F

SERIES

MOUNTING

TH9	through-hole
SH9	surface mount

CAP

1T
1U
1V

COLOR

00	blue
03	grey
08	red
09	black

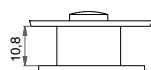
NOTICE : Other versions : Please refer to www.apem.com for information on the 5G series versions - 1TS/1US/1VS



MOUNTING

- Panel cut-out :
1T : min. 11.0 x 11.0 mm
1U : min. Ø11.0 mm
1V : min. 11.0 x 13.65 mm
- Switch spacing AxB : min. 12.7 x 12.7 mm

DISTANCE BETWEEN PCB
AND FRONT PANEL
IN CASE OF SEALING



MATERIALS

- Cap :
- solid color : ABS UL94HB
- illuminated : polycarbonate UL94HB