

HEMOMATIK

Sweden

Liquid level switch

Art.nr. HM-1/8MS-V

R1/8"

Drawing nr. HM18MS-V

Rev. 1

Approved H.S. 930602

Scale 1:1

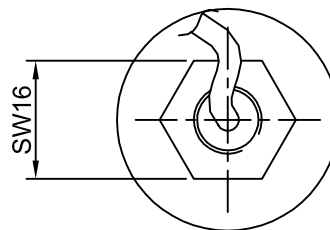
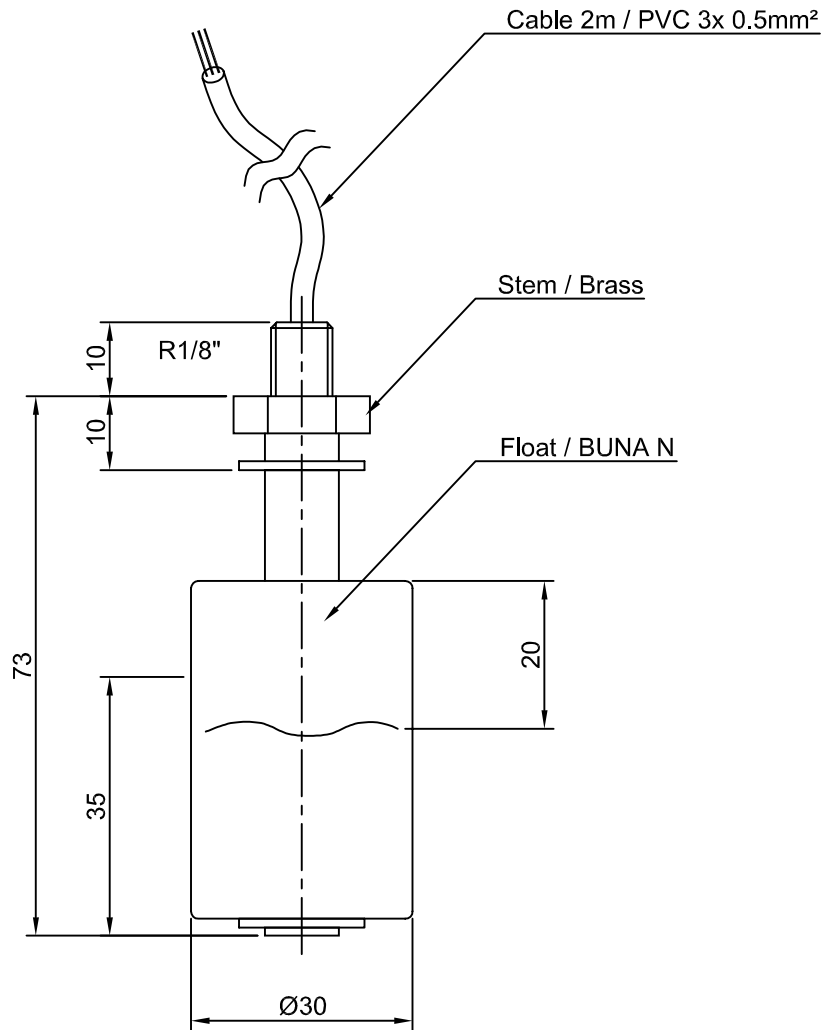
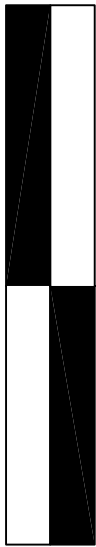
change-over contact

Date 930511

Sign. MEM

Rev. date

black
blue (common)
brown



■ = Switch closed

□ = Switch open

Contact rating *	60 VA
max voltage	50 V
max current	1 A

* = resistive load