

DRAWING FOR REFERENCE: This is subject to change without notice
08/11/2012

TO
Q

COUNT	DESCRIPTION OF REVISIONS	BY	CHKD	DATE	COUNT	DESCRIPTION OF REVISIONS	BY	CHKD	DATE

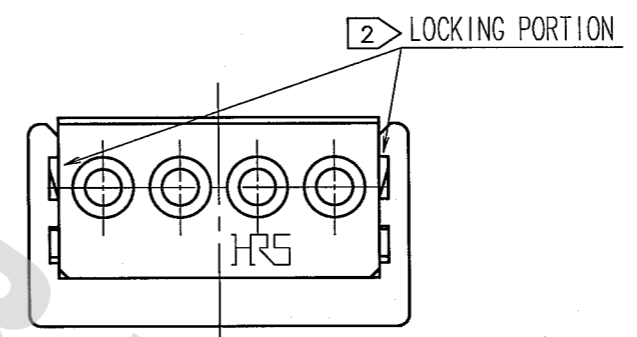
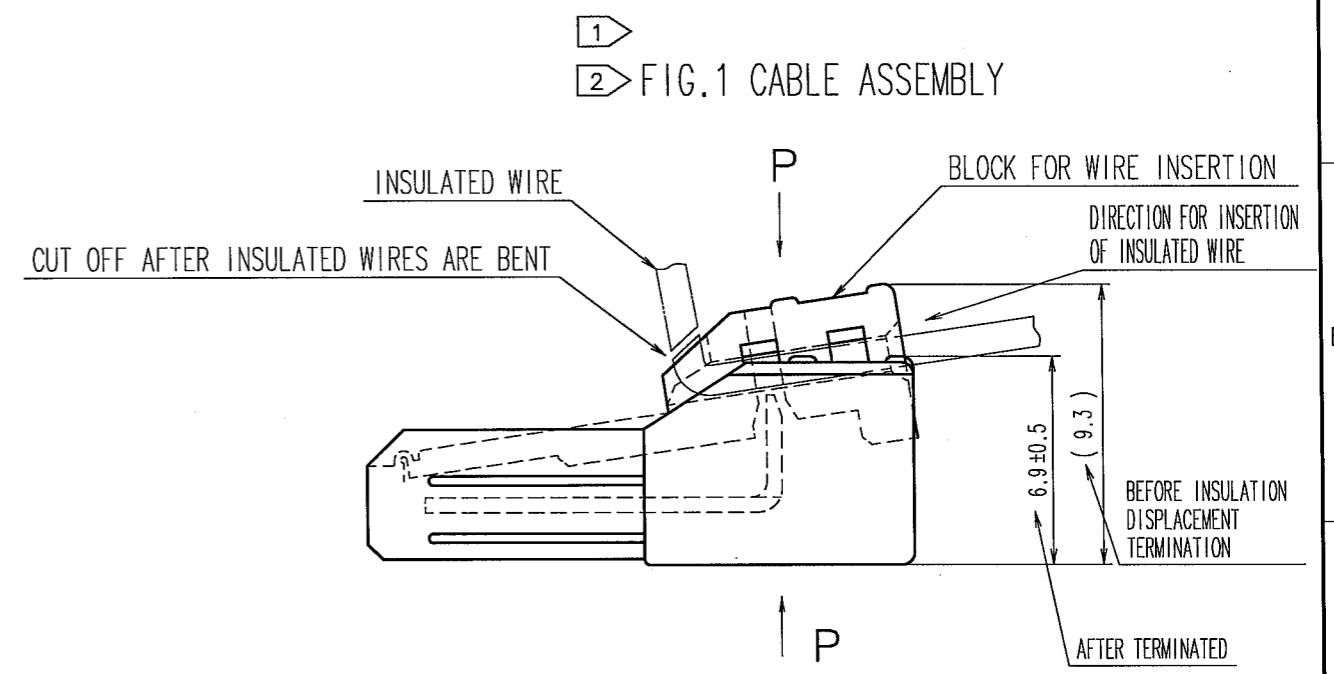
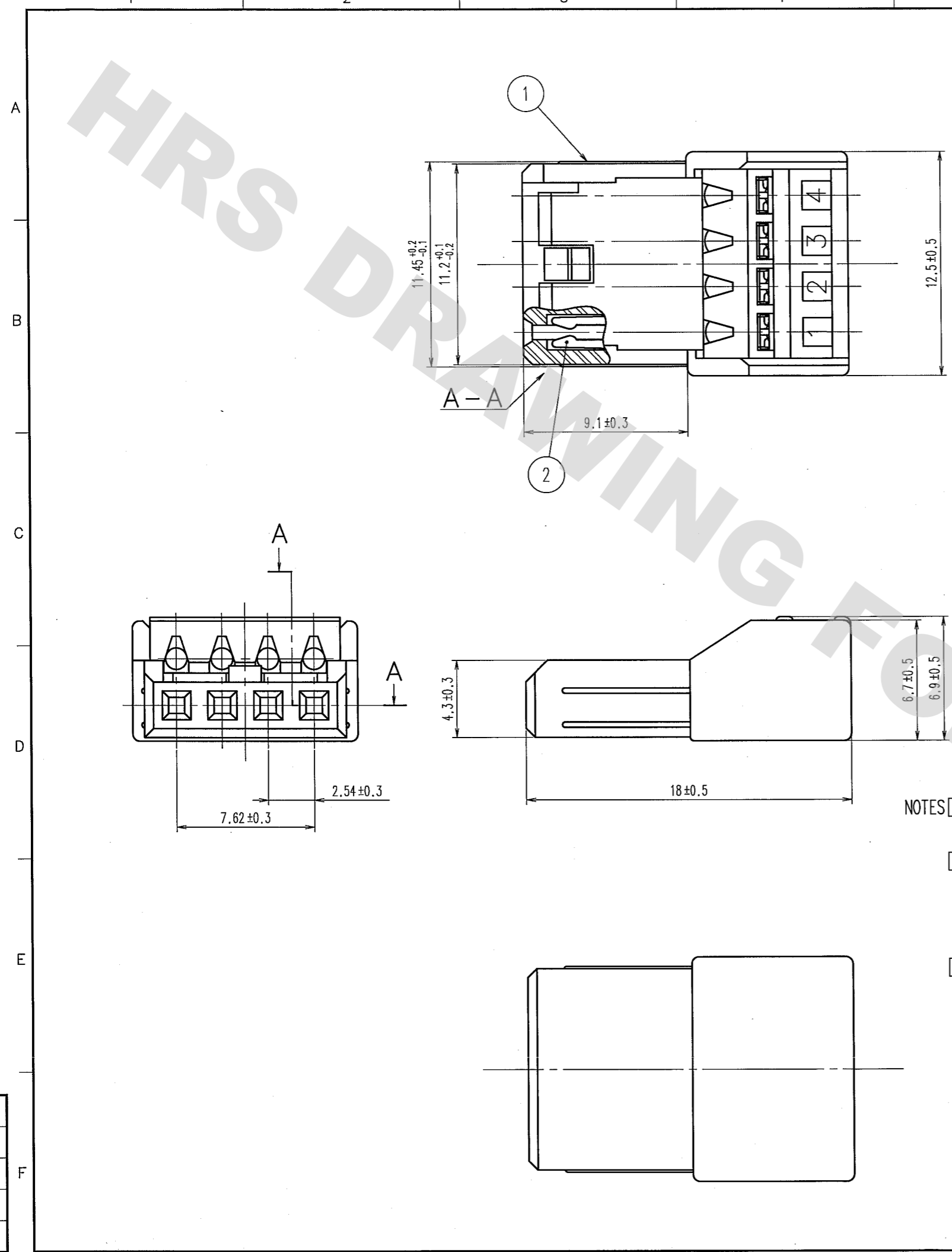


TABLE -1
THE APPLICABLE WIRE

APPLICABLE WIRE	
CONDUCTOR DIAMETER	JACKET DIAMETER
φ 0.4	φ 0.66
φ 0.5	φ 0.8
φ 0.65	φ 1.05

- NOTES
- 1 WHEN THIS PRODUCT ARE DELIVERD, BLOCK FOR WIRE INSERTION TO BE TEMPORARILY POSITIONED (UNLOCKED) SHOWN AS FIG.1.
 - 2 THE TERMINATION METHOD SHALL CONFOR TO FIG.1 TO BEGIN WITH INSERT WIRES TO GO THROUGH AND BEND WIRES. AFTER THAT CUT OFF INSULATED WIRES WITH NIPPER. AND CRAMP IT WITH PLIERS IN THE *P* DIRECTION, SHOWN AS FIG.1. (PLEASE MAKE SURE LOCKING PORTION ARE LOCKED.)
 - 3 THE APPLICABLE WIRE IS SHOWN IN TABLE-1.

1	POLYAMIDE	BLACK UL94V-0	2	PHOSPHOR BRONZE	TIN-COPPER PLATING 3μm OVER NICKEL PLATING 2μm
NO.	MATERIAL	FINISH, REMARKS	NO.	MATERIAL	FINISH, REMARKS
CODE NO. (OLD) CL		DRAWN <i>T. Watanabe</i> 05.09.27	DESIGNED <i>T. Watanabe</i> 05.09.27	CHECKED <i>H. Miura</i> 05.09.27	APPROVED <i>H. Miura</i> 05.09.27
DRAWING NO. EDC3-041062-01		PART NO. MQ115-4S-1A(21)		CODE NO. CL206-5131-0-21	
SCALE 4 : 1		UNITS mm		HRS HIROSE ELECTRIC CO., LTD	