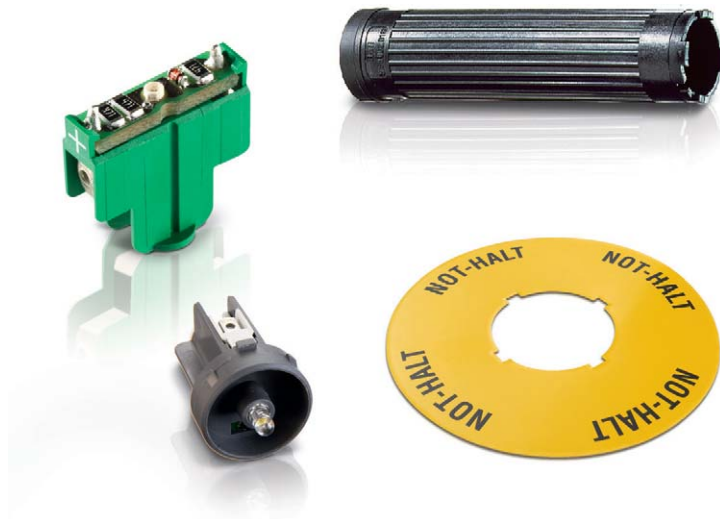


CONTROL COMPONENTS

RAFIX FS TECHNOLOGY - SPECIAL ACCESSORIES



2

RAFIX FS Technology - Special accessories

Spec.
accessories

CONTROL COMPONENTS

RAFIX FS TECHNOLOGY - SPECIAL ACCESSORIES

Content

RAFIX FS Technology Special accessories	2 - 261
Fixing spanner for ring nut and front ring	2 - 261
QC LED base for signal indicators	2 - 261
Female quick-connect terminal DIN 46340-B 2.8-1-MS	2 - 262
LED base for contact blocks QC	2 - 262
SMT LED	2 - 263
LED base for 3 mm THT LED, used in signal indicators, for RAFIX FS PCB	2 - 263
THT LED 3 mm, without base	2 - 263
Emergency stop label, Ø 22.3 mm	2 - 264
Spacers, round	2 - 265
RAFIX 22 FS+ / RAFIX 22 FSR Protective Collar	2 - 265
RAFIX 22 FS Blanking cap, Ø 22.3 mm	2 - 266
Retaining ring for front panel thickness 2.5 ... 4 mm	2 - 266
RAFIX FS Protective cap for keylock switch	2 - 267

2

Spec.
accessories

RAFIX FS TECHNOLOGY Special accessories

2

Fixing spanner for ring nut and front ring



→ Description	Fitting for	Order no.
Fixing spanner for ring nut	RAFIX 22 QR/FS	5.05.800.062/0000

QC LED base for signal indicators



Spec.
accessories

→ Description	Order no.
RAFIX 22 FS ⁺ - Socket for LED-Clip, quick-connect terminals	5.05.511.855/9000

CONTROL COMPONENTS

RAFIX FS TECHNOLOGY - SPECIAL ACCESSORIES



Female quick-connect terminal DIN 46340-B 2.8-1-MS

→ Description

Order no.

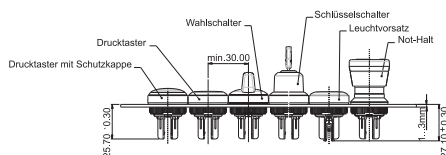
Female quick-connect terminal DIN 46340-B 2.8-1-MS

5.37540.024/8622

With latching detent for mating with a multipole connector.



LED base for contact blocks QC



→ Voltage DC

Color

Order no.

12 V

red

5.05.511.747/0300

12 V

yellow

5.05.511.747/0400

12 V

green

5.05.511.747/0500

12 V

blue

5.05.511.747/0600

12 V

white

5.05.511.747/0200

24 V

red

5.05.511.747/1300

24 V

yellow

5.05.511.747/1400

24 V

green

5.05.511.747/1500

24 V

blue

5.05.511.747/1600

24 V

white

5.05.511.747/1200

Accessoires:

LED base for signal indicators: see page

2

Spec.
accessories

SMT LED



→ Description	Order no.
---------------	-----------

For the best illumination of actuators and signal indicators we suggest to use the following SMT LED type: OSRAM LT P4SG

LED base for 3 mm THT LED, used in signal indicators, for RAFIX FS PCB



→ Description	Order no.
LED base for signal indicators, height 5 mm	5.30.109.020/0756

THT LED 3 mm, without base

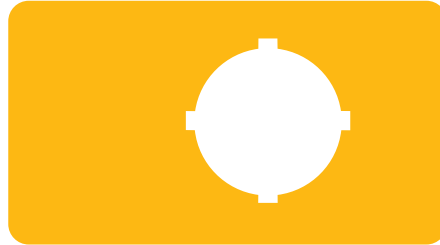


→ Color	Forward voltage typ. U_F at I_F	Max. current, I_F	Order no.
red	1,6 V / 1 mA	30 mA	1.90.690.228/0000
red	1.9 V / 20 mA	50 mA	1.90.690.269/0000
yellow	1.9 V / 20 mA	50 mA	1.90.690.267/0000
green	3.5 V / 20 mA	30 mA	1.90.690.285/0000
blue	3,6 V / 20 mA	30 mA	1.90.690.282/0000
white	3,6 V / 20 mA	30 mA	1.90.690.295/0000

CONTROL COMPONENTS

RAFIX FS TECHNOLOGY - SPECIAL ACCESSORIES

Emergency stop label, Ø 22.3 mm

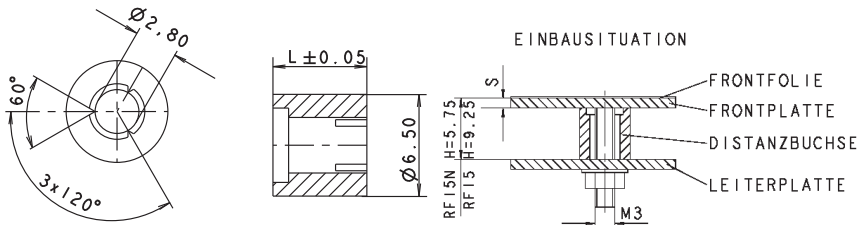


2

→ Dimensions	inside Ø	Label	Order no.
36 x 64 mm	22.3 mm	-	5.76.205.011/0400
Ø 40 mm	22.3 mm	„NOT-HALT, EMERGENCY STOP, ARRET D'URGENCE, EMERGENZA“	5.76.204.115/0400
Ø 40 mm	22.3 mm	4 x „NOT-AUS“	5.76.204.119/0400
Ø 40 mm	22.3 mm	4 x „NOT-HALT“	5.76.204.117/0400
Ø 40 mm	22.3 mm	4 x „EMERGENCY STOP“	5.76.204.121/0400
Ø 60 mm	22.3 mm	1 x „NOT-AUS“	5.76.204.101/0400
Ø 60 mm	22.3 mm	1 x „ARRET D'URGENCE“	5.76.204.102/0400
Ø 60 mm	22.3 mm	1 x „EMERGENCY STOP“	5.76.204.103/0400
Ø 60 mm	22.3 mm	„EMERGENCY-STOP / ARRET D'URGENCE“	5.76.207.002/0400
Ø 60 mm	22.3 mm	„NOT-HALT, EMERGENCY STOP, ARRET D'URGENCE, EMERGENZA“	5.76.204.107/0400
Ø 60 mm	22.3 mm	4 x „NOT-HALT“	5.76.204.109/0400
Ø 60 mm	22.3 mm	4 x „NOT-AUS“	5.76.204.111/0400
Ø 60 mm	22.3 mm	4 x „EMERGENCY STOP“	5.76.204.113/0400
Ø 60 mm	22.3 mm	1 x „NOT-AUS“	5.76.207.001/0400

Spec.
accessories

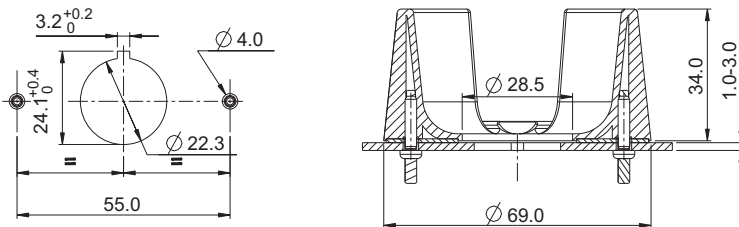
Spacers, round



→ Length L	Color	Order no.
6.25 mm	red	5.30.759.034/0000
6.50 mm	blue transparent	5.30.759.035/0000
6.75 mm	black	5.30.759.036/0000
7 mm	yellow orange transparent	5.30.759.037/0000
7.25 mm	yellow	5.30.759.038/0000
7.50 mm	green	5.30.759.039/0000
7.75 mm	blue	5.30.759.040/0000
8 mm	red	5.30.759.041/0000
8.25 mm	blue transparent	5.30.759.042/0000

Required spacer length
 For keyboards: Overall height of key - front panel thickness - 0.5 mm (area embossing).
 For RAFIX 22 FS: 9.25 mm - front panel thickness - thickness of overlay, if existing

RAFIX 22 FS+ / RAFIX 22 FSR Protective Collar



Spec.
accessories

→ Description	Order no.
Protective Collar for emergency stop RAFIX 22 FS+	5.00.456.001/0000

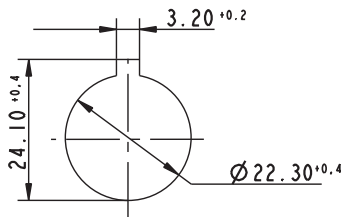
CONTROL COMPONENTS

RAFIX FS TECHNOLOGY - SPECIAL ACCESSORIES

– Table (continued) –

RAFIX 22 FS+ / RAFIX 22 FSR Protective Collar

RAFI protective collars protect the pushbuttons from unintentional operation and damage. Another great advantage is that they can be mounted directly on the front panel using two screws and without mechanical attachment to the actuator and/or emergency stop pushbutton. This provides for additional safety because lateral forces are not transferred to the actuator housing.



Panel cut-out to IEC 60947-5-1

RAFIX 22 FS Blanking cap, Ø 22.3 mm



round, high version



square blanking cap

→ Description	Form	Overall height	Order no.
Blanking cap IP65, ring nut, round, slate gery, flat	round	flush	5.05.800.067/0000
Blanking cap IP65, ring nut, round, high version, can be used for covering mounted PCB contact blocks.	round	high	5.05.200.025/0000
Blanking cap IP65, ring nut, square, slate grey, flat	square	flush	5.05.800.068/0000
Blanking cap IP65, ring nut, square, high version, can be used for covering mounted PCB contact blocks.	square	high	5.05.200.026/0000



Retaining ring for front panel thickness 2.5 ... 4 mm

→ Description	Order no.
Retaining ring for front panel thickness 2.5 ... 4 mm	5.45.201.556/0700

2

Spec.
acces-
sories

RAFIX FS Protective cap for keylock switch



→ Description	Order no.
RAFIX FS - Protective cap for keylock switch	5.55.105.454/0111
