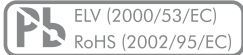


Selector Switch Type 04

- **Very robust and versatile**
 - **24 positions multi wafer switch**
- **25,000 switching cycles with up to 20 Ncm switching torque**
- **Gold plated contacts: 3 micron**
- **Optional IP68 front panel sealing**
- **Operating temperature range: -40 to +85°C**
- **Various options and customization**



Standard Product Variety

- Soldering eyelets or pins for PCB
- From 1 x 24 to 6 x 3 poles/positions per wafer
- Up to 8 wafers
- 15 or 30° indexing angle
- Shorting or non-shorting
- 1.5, 8.0, 15 or 20 Ncm switching torque
- IP60 or IP68 front panel sealing
- Configurable end stops
- Shaft diameter: 6 mm or ¼"

Possible Customization

- Shaft dimensions and shape
- Bushing dimensions
- Switching torque
- Hollow shaft, inner shaft
- Others

Typical Applications

- Industrial controls
- Avionics, instrumentation, test systems
- Medical and audio equipment

Selector Switch Type 04

Preference Types Selection Chart¹

Indexing Angle 15°, Shorting

Contact Arrangement	Construction	Poles x Positions	With Solder Eyelets	With Pins for PCB
	1—H	1 x 24, endless rotating	04-1103	04-1103-20
	2—HH	2 x 24, endless rotating	04-2103	—
	3—HHH	3 x 24, endless rotating	04-3103	—
	4—HHHH	4 x 24, endless rotating	04-4103	—
	1—H	1 x 24	04-1133	04-1133-20
	2—HH	2 x 24	04-2133	—
	3—HHH	3 x 24	04-3133	—
	4—HHHH	4 x 24	04-4133	—
	1—H	2 x 11	04-1213	04-1213-20
	2—HH	4 x 11	04-2213	—
	3—HHH	6 x 11	04-3213	—
	4—HHHH	8 x 11	04-4213	—
	1—H	3 x 7	04-1373	04-1373-20
	3—HHH	6 x 7	04-2373	—
	2—HH	9 x 7	04-3373	—
	4—HHHH	12 x 7	04-4373	—
	1—H	4 x 5	04-1453	04-1453-20
	2—HH	8 x 5	04-2453	—
	3—HHH	12 x 5	04-3453	—
	4—HHHH	16 x 5	04-4453	—
	1—H	6 x 3	04-1633	04-1633-20
	2—HH	12 x 3	04-2633	—
	3—HHH	18 x 3	04-3633	—
	4—HHHH	24 x 3	04-4633	—

Indexing Angle 30°, Non-Shorting

Contact Arrangement	Construction	Poles x Positions	With Solder Eyelets	With Pins for PCB
	1—H	1 x 12, endless rotating	04-1104	04-1104-20
	2—HH	2 x 12, endless rotating	04-2104	—
	3—HHH	3 x 12, endless rotating	04-3104	—
	4—HHHH	4 x 12, endless rotating	04-4104	—
	1—H	1 x 12	04-1124	04-1124-20
	2—HH	2 x 12	04-2124	—
	3—HHH	3 x 12	04-3124	—
	4—HHHH	4 x 12	04-4124	—
	1—H	2 x 6	04-1264	04-1264-20
	2—HH	4 x 6	04-2264	—
	3—HHH	6 x 6	04-3264	—
	4—HHHH	8 x 6	04-4264	—
	1—H	3 x 4	04-1344	04-1344-20
	2—HH	6 x 4	04-2344	—
	3—HHH	9 x 4	04-3344	—
	4—HHHH	12 x 4	04-4344	—
	1—H	4 x 3	04-1434	04-1434-20
	2—HH	8 x 3	04-2434	—
	3—HHH	12 x 3	04-3434	—
	1—H	16 x 3	04-4434	—
	4—HHHH	6 x 2	04-1624	04-1624-20
	2—HH	12 x 2	04-2624	—
	3—HHH	18 x 2	04-3624	—
	4—HHHH	24 x 2	04-4624	—
PCB wafer switch	1—H	0 – 9 BCD	—	04P1913

Stop Screws and Bushing Nut

	Packaging Unit	Order Number
Configurable stop screws can be set on any position between 2 and the maximum. Stop screws have to be ordered separately.	Stop screw M1.4	10 pcs.
	Stop screw M1.4	100 pcs.
	Bushing nut	10 pcs.

¹ For other types/options, see type key.

Specifications

Mechanical Data

Resolution: 24 positions max. (15° indexing); shorting
 12 positions max. (30° indexing); non-shorting
 Switching torque (new condition): 1.5, 8.0, 15 or 20 Ncm (+/- 25%)
 Rotational life: 25,000 switching cycles min.
 Fastening torque of nut: 300 Ncm max.

Electrical Data

Function: From 1 x 24 to 6 x 3 poles/positions per wafer
 (max. 8 wafers; >8 wafers are available on request)
 Switching mode: Shorting (for 15° indexing)
 Non-shorting (for 30° indexing)
 Load current: 2 A max. (resistive load)
 Switching voltage: 42 VDC max.
 Contact resistance (new condition): 10 mOhms max.
 Insulation resistance: 10¹² Ohms min. (contact to contact/housing)
 Switching capacitance: 1 pF max. (contact to contact)
 Dielectric withstanding voltage: 500 VDC during 60 seconds

Material Data

Shaft: Stainless steel
 Bushing/housing: Zinc diecast, zinc plated and passivated
 Nut: Brass, zinc plated and passivated
 Contact plating: AuCo (hard gold); 3 μm
 Insulation material: Wafer: HF ceramic, rotor: Polybutylene (PBTB)
 Soldering leads: Alloy copper, AuCo plated (hard gold)

Environmental Data

Operating temperature range: -40 to +85°C
 IP sealing: IP60, optional IP68 (2 bar, 1 hour) shaft/front panel sealing
 Vibration: 10 G_{rms} max. @ 10 to 2000 Hz
 Flammability: UL94-HB

Packaging Sizes

Tray: 10 pcs.

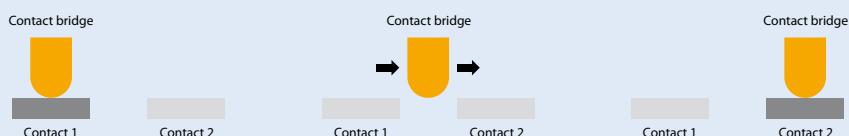
Soldering Conditions

Hand soldering: 300°C max. during 3 s max.
 Wave soldering: 280°C max. peak temperature during 5 s max.

Switching Modes

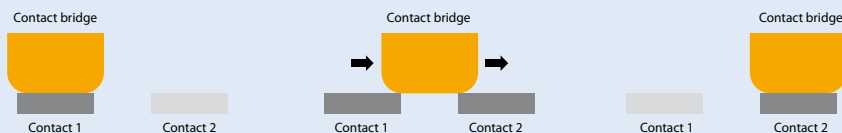
Non-Shorting

(break before make)



Shorting

(make before break)

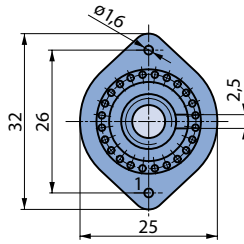
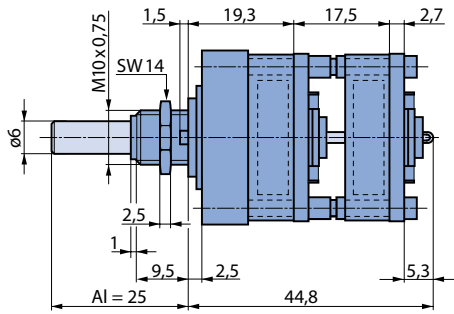


Selector Switch Type 04

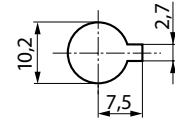
Drawings

With Solder Eyelets

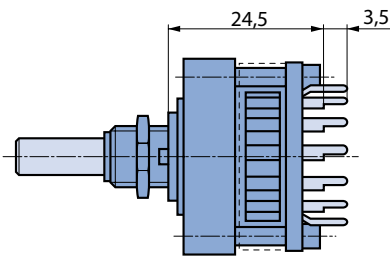
SW = key spanner



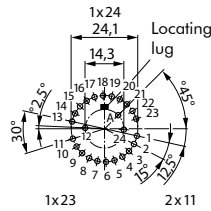
Front panel cut out



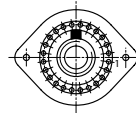
With Pins for PCB Mounting



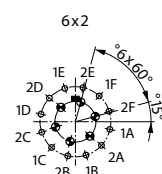
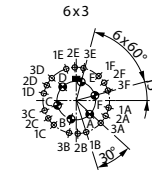
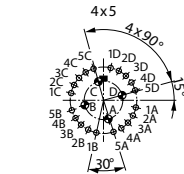
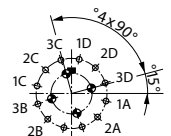
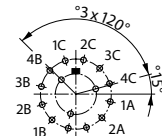
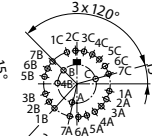
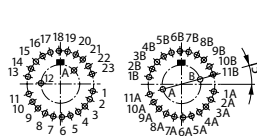
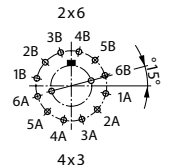
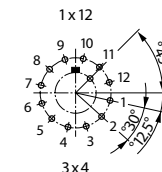
Drilling diagram 15° for indexing angle



View from the spindle end



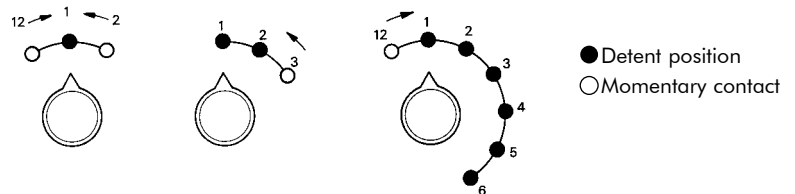
Drilling diagram 30° for indexing angle



○ = $\phi 1,3\text{mm}$
● = $\phi 2,3\text{mm}$

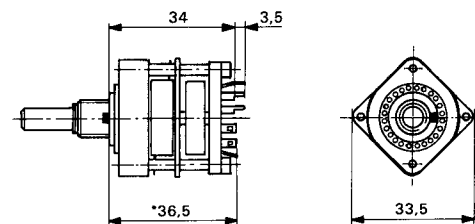
Switch with Momentary Contact

Examples



● Detent position
○ Momentary contact

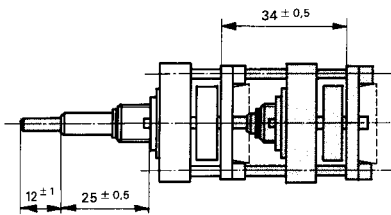
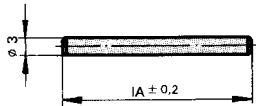
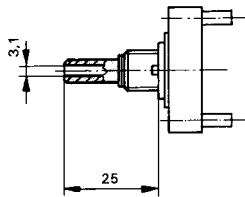
Dimensions



*17.5 mm extra per wafer

Selector Switch Type 04

Hollow Shaft System



Hollow Shaft

Available for switches up to 5 wafers; inner shaft (Ø 3 mm) to be ordered separately.

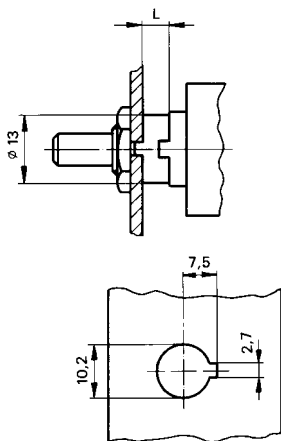
Inner Shaft

For switches with mounting plate or hollow shaft, inner shafts must be ordered separately. Please state exact length.

Switches with 2 Drive Shafts

Consisting of a hollow outer plus and inner shaft. The inner shaft driving a maximum of 3 wafers with 6 wipers each. Please give type description of each switch.

Spacers



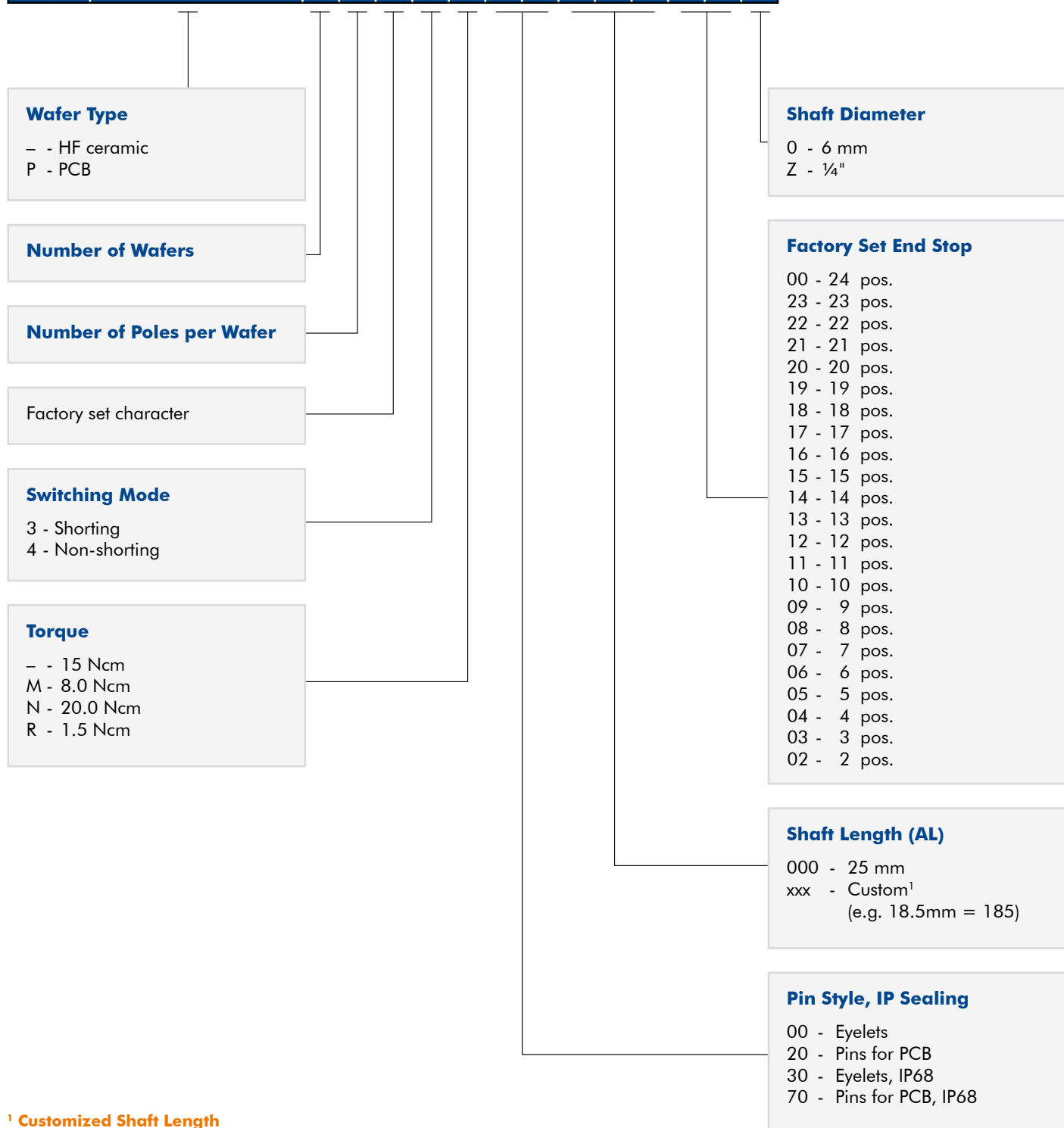
Spacers can be used in many cases in place of shortened bushes; made of glass-fibre reinforced plastic to compensate the front panel thickness; available in two standard lengths.

Length L	Packaging Unit	Order Number
3.5 mm	10 pcs.	4124-31
3.5 mm	100 pcs.	4124-30
5.5 mm	10 pcs.	4124-36
5.5 mm	100 pcs.	4124-35

Selector Switch Type 04

Type Key

0 4 - X X X X - X X X X X X X X



¹ Customized Shaft Length

Please state shaft length (AL) measured from mounting face (max. AL = 50 mm).

