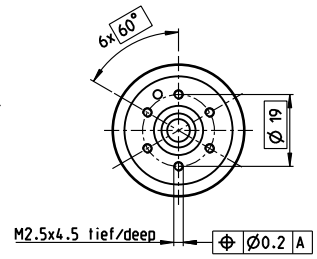
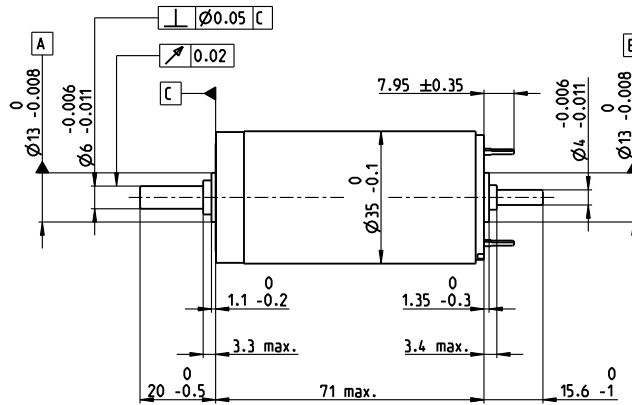
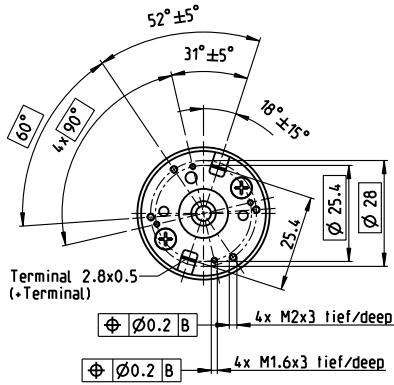


RE 35 Ø35 mm, Graphite Brushes, 90 Watt

RE



M 1:2

- Stock program
- Standard program
- Special program (on request)

		Part Numbers													
according to dimensional drawing		273752	323890	273753	273754	273755	273756	273757	273758	273759	273760	273761	273762	273763	
shaft length 15.6 shortened to 4 mm		285785	323891	285786	285787	285788	285789	285790	285791	285792	285793	285794	285795	285796	

Motor Data															
Values at nominal voltage															
1 Nominal voltage	V	15	24	30	42	48	48	48	48	48	48	48	48	48	
2 No load speed	rpm	7200	7750	7280	7580	7310	6680	5990	4770	3830	3150	2590	2110	1630	
3 No load current	mA	188	128	94.1	70.5	58.9	52.6	46	34.9	27	21.6	17.3	13.9	10.5	
4 Nominal speed	rpm	6500	6990	6470	6800	6510	5870	5170	3930	2990	2290	1720	1230	737	
5 Nominal torque (max. continuous torque)	mNm	74.2	105	101	105	103	104	106	106	108	107	107	106	106	
6 Nominal current (max. continuous current)	A	4	3.72	2.68	2.07	1.71	1.58	1.41	1.15	0.934	0.764	0.628	0.508	0.393	
7 Stall torque	mNm	931	1200	976	1090	983	892	778	621	499	399	323	256	196	
8 Stall current	A	47.9	41.2	25.1	20.7	15.8	13.1	10.3	6.52	4.21	2.77	1.85	1.2	0.71	
9 Max. efficiency	%	85	87	87	88	88	87	86	85	84	83	81	79	77	
Characteristics															
10 Terminal resistance	Ω	0.313	0.582	1.2	2.03	3.04	3.66	4.68	7.36	11.4	17.3	26	40.1	67.6	
11 Terminal inductance	mH	0.085	0.191	0.34	0.62	0.87	1.04	1.29	2.04	3.16	4.65	6.89	10.3	17.1	
12 Torque constant	mNm/A	19.4	29.2	38.9	52.5	62.2	68	75.8	95.2	119	144	175	214	276	
13 Speed constant	rpm/V	491	328	246	182	154	140	126	100	80.5	66.4	54.6	44.7	34.6	
14 Speed / torque gradient	rpm/mNm	7.91	6.54	7.55	7.03	7.5	7.55	7.77	7.75	7.74	7.99	8.1	8.38	8.47	
15 Mechanical time constant	ms	5.62	5.41	5.37	5.32	5.32	5.32	5.33	5.33	5.33	5.34	5.35	5.36	5.38	
16 Rotor inertia	gcm ²	67.9	79	67.9	72.3	67.7	67.2	65.4	65.7	65.7	63.8	63	61	60.6	

Specifications	Operating Range	Comments
Thermal data 17 Thermal resistance housing-ambient 6.2 K/W 18 Thermal resistance winding-housing 2 K/W 19 Thermal time constant winding 30.1 s 20 Thermal time constant motor 707 s 21 Ambient temperature -30...+100°C 22 Max. winding temperature +155°C Mechanical data (ball bearings) 23 Max. speed 12000 rpm 24 Axial play 0.05 - 0.15 mm 25 Radial play 0.025 mm 26 Max. axial load (dynamic) 5.6 N 27 Max. force for press fits (static) 110 N (static, shaft supported) 1200 N 28 Max. radial load, 5 mm from flange 28 N		<ul style="list-style-type: none"> ■ Continuous operation In observation of above listed thermal resistance (lines 17 and 18) the maximum permissible winding temperature will be reached during continuous operation at 25°C ambient. = Thermal limit. Short term operation The motor may be briefly overloaded (recurring). Assigned power rating

maxon Modular System	Details on catalog page 34
29 Number of pole pairs 1 30 Number of commutator segments 13 31 Weight of motor 340 g Values listed in the table are nominal. Explanation of the figures on page 72. Option Hollow shaft as special design Preloaded ball bearings	<ul style="list-style-type: none"> Encoder MR 256 - 1024 CPT, 3 channels Page 464 Encoder HED_ 5540 500 CPT, 3 channels Page 471/473 DC-Tacho DCT Ø22 mm 0.52 V Page 480 Brake AB 28 24 VDC 0.4 Nm Page 519 End cap Page 525