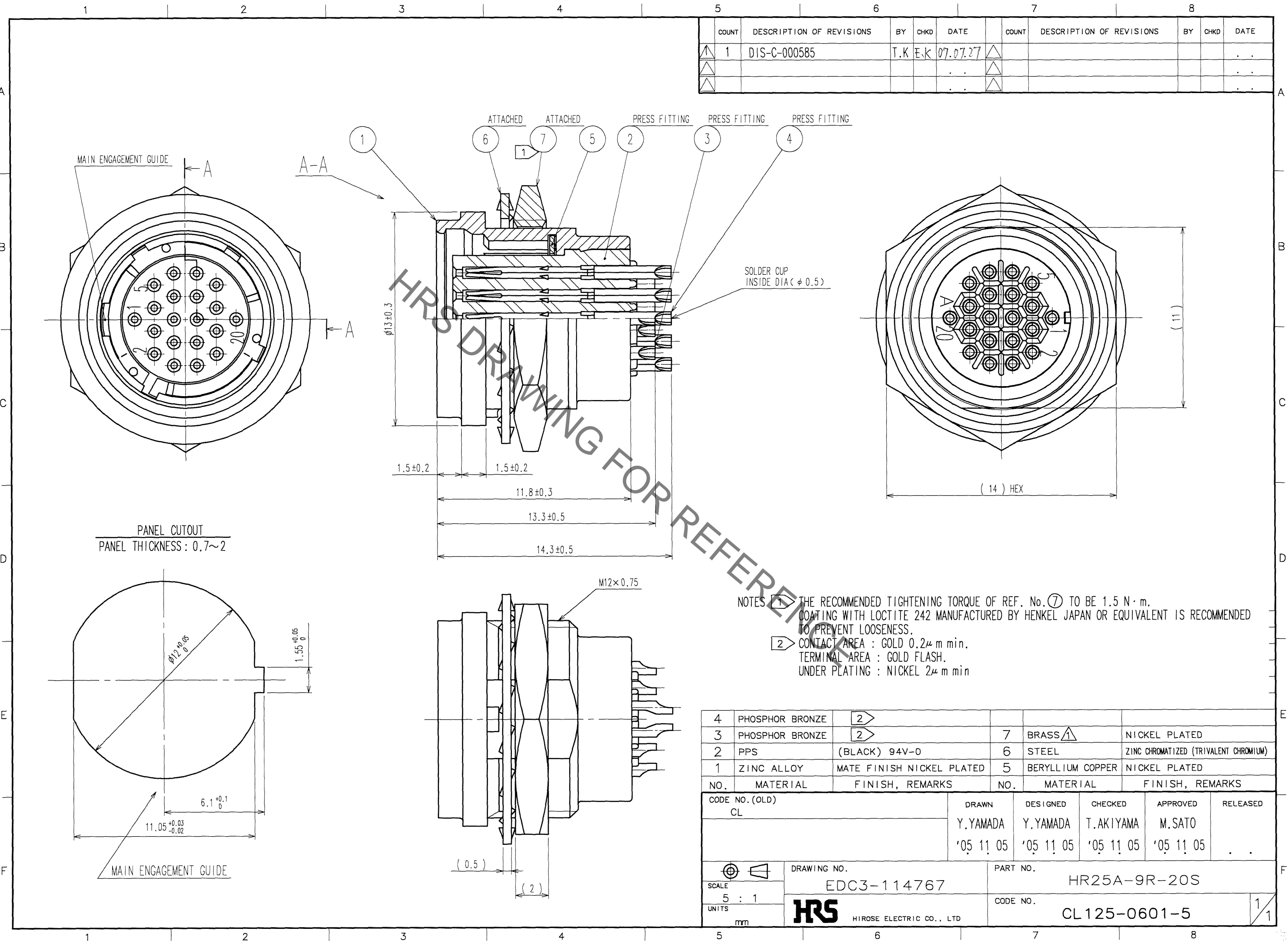


Jun.1.2019 Copyright 2019 HIROSE ELECTRIC CO., LTD. All Rights Reserved.  
In case of consideration for using Automotive equipment / device which demand high reliability, kindly contact our sales window correspondents.



COUNT	DESCRIPTION OF REVISIONS	BY	CHKD	DATE	COUNT	DESCRIPTION OF REVISIONS	BY	CHKD	DATE
1	DIS-C-000585	T.K	E.K	07.07.27					

PANEL CUTOUT  
PANEL THICKNESS: 0.7~2

- NOTES
- ① THE RECOMMENDED TIGHTENING TORQUE OF REF. No. ⑦ TO BE 1.5 N·m. COATING WITH LOCTITE 242 MANUFACTURED BY HENKEL JAPAN OR EQUIVALENT IS RECOMMENDED TO PREVENT LOOSENESS.
  - ② CONTACT AREA : GOLD 0.2μ m min.  
TERMINAL AREA : GOLD FLASH.  
UNDER PLATING : NICKEL 2μ m min

NO.	MATERIAL	FINISH, REMARKS	NO.	MATERIAL	FINISH, REMARKS
4	PHOSPHOR BRONZE	②	7	BRASS	NICKEL PLATED
3	PHOSPHOR BRONZE	②	6	STEEL	ZINC CHROMATIZED (TRIVALENT CHROMIUM)
2	PPS	(BLACK) 94V-0	5	BERYLLIUM COPPER	NICKEL PLATED
1	ZINC ALLOY	MATE FINISH NICKEL PLATED			

CODE NO. (OLD)	CL	DRAWN	DESIGNED	CHECKED	APPROVED	RELEASED
		Y.YAMADA	Y.YAMADA	T.AKIYAMA	M.SATO	
		'05 11 05	'05 11 05	'05 11 05	'05 11 05	

SCALE	DRAWING NO.	PART NO.
5 : 1	EDC3-114767	HR25A-9R-20S
UNITS	mm	CODE NO.
	HRS HIROSE ELECTRIC CO., LTD	CL125-0601-5

TO
R