



# RF Power Capacitors Class1

10kV Hi-Load: Tag-Screw Mounting

# RF Power Capacitors Class1

## 10kV Hi-Load: Tag-Screw Mounting

The CeramTec Group is a world leader in the design and manufacture of complex electronic ceramic components and assemblies used in a wide range of applications and cutting edge technologies. CeramTec UK specialises in the development and production of dielectric and ferroelectric materials and components. This range of high voltage RF discs capacitors is fabricated from very low loss CLASS 1 ceramic dielectric materials which permit them to carry very high electrical loads over a wide frequency range.



### APPLICATIONS INCLUDE

- Radio Broadcast Transmitters
- Induction and Dielectric Heating Equipment
- HF Filter, By-Pass & Coupling Circuits
- High Power Matching Tuned Circuits
- Antenna Circuits
- Industrial Applications
- High Power matching networks –Plasma Generators
- High quality medical imaging systems (MRI)

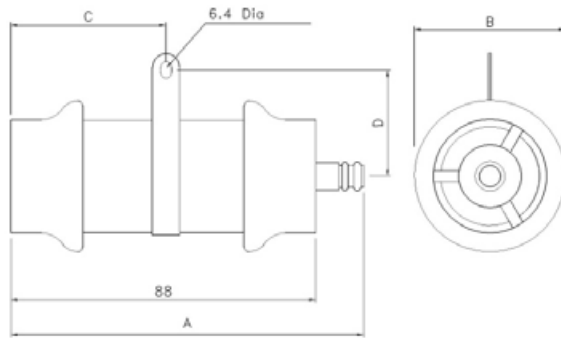
### FEATURES

- Low loss Class 1 ceramic dielectric materials with noble metal electrodes resulting in low self heating.
- High Voltage / High Reactive Power Ratings
- Very low NPO capacitance-temperature characteristics available that result in correspondingly low tuned frequency drift.
- Low Inductance construction permitting higher frequency use.
- Low magnetic susceptibility

Material Characteristics						
Dielectric Constant @ 20°C / 1 MHz		15	36	77	90	190
Temperature Coefficient of Capacitance	ppm/°C	+100 ±60	0 ±30	0 ±30	-750 ±80	-1300 ±120
Tan δ 1 MHz (Cap ≤ 1000 pF)	x 10 <sup>-4</sup>	≤ 5	≤ 5	≤ 5	≤ 5	≤ 5
Tan δ 1 kHz (Cap > 1000 pF)	x 10 <sup>-4</sup>	≤ 10	≤ 10	≤ 10	≤ 10	≤ 10
Dielectric Strength	kVmm <sup>-1</sup> dc	22	20	15	10	10
Volume Resistivity	Ωm	10 <sup>13</sup>	10 <sup>13</sup>	10 <sup>13</sup>	10 <sup>13</sup>	10 <sup>13</sup>

Electrical Specification	
Capacitance Range	125 – 2500pF (see table)
Capacitance Tolerance	±20 % ±10 % Consult factory for other tolerances
Rated RF Voltage	10kV pk (see table)
Test Voltage (50 Hz)	√2 x Rated Voltage / 60sec
RF Voltage, Current kVAR & Load v Frequency	See RF rating curves (ref 30°C max ambient temperature)
Operating Temperature Range	-25°C +95°C
Maximum Relative Humidity	75 %

Outline Drawing: Hi-load 10kV Discs. Tag-Screw-Mounting



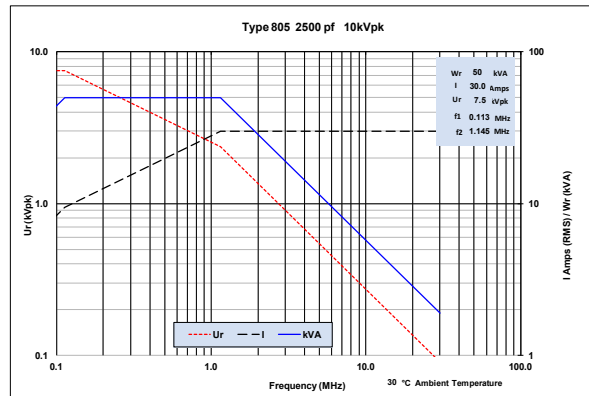
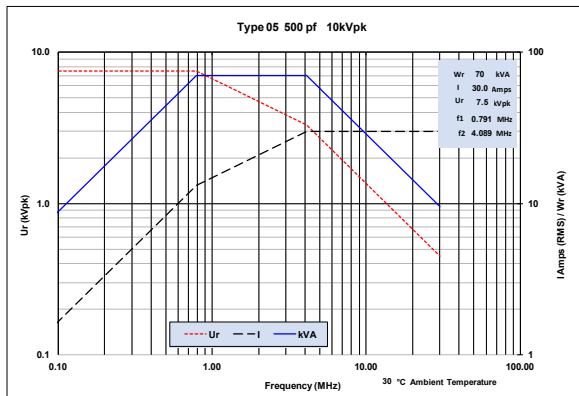
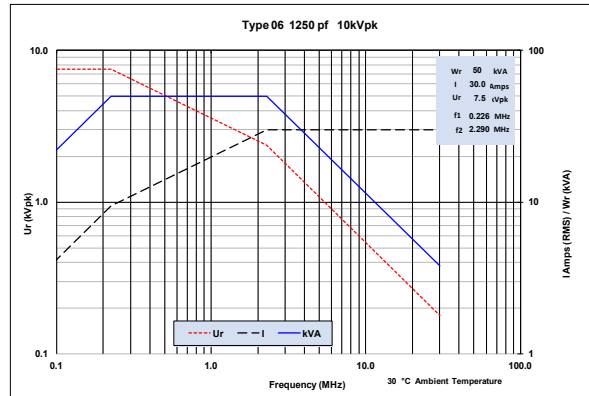
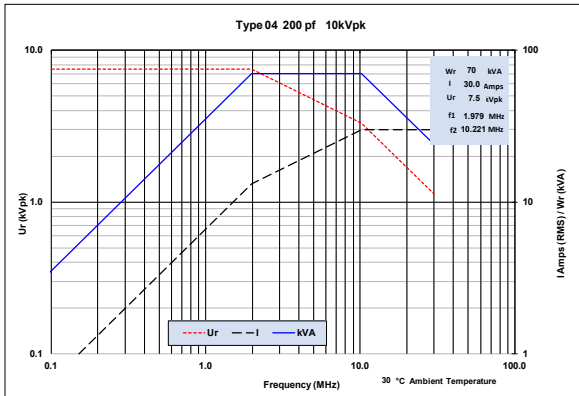
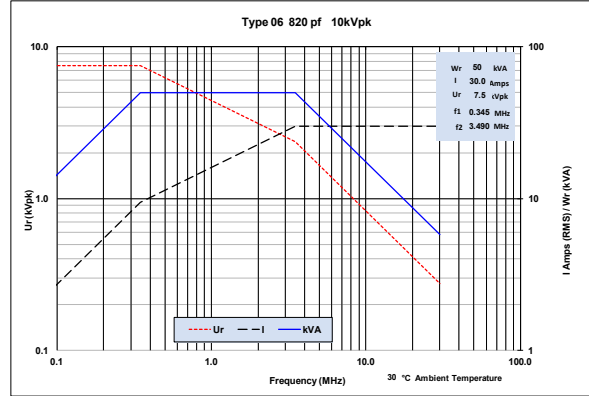
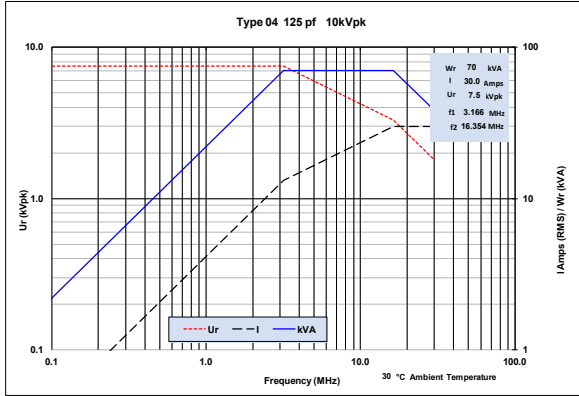
Vertical Mounting Recommended

Electrical Characteristics

Type No	Cap Value pF	TCC ppm/ °C	Rated (ACpk + DC) kVpk	Rated AC kVpk	Test 50 Hz kVrms	Max POWER Rating (kVA <sub>r</sub> )	Max Current Rating (A rms)	A nom (mm)	B nom (mm)	C nom (mm)	D nom (mm)	Thread Size (mm)
04	125	+100	10	7.5	10	70	30	120	46	44	38	M6
04	150	+100	10	7.5	10	70	30	120	46	44	38	M6
04	200	+100	10	7.5	10	70	30	120	46	44	38	M6
05	330	0	10	7.5	10	70	30	120	46	44	38	M6
05	430	0	10	7.5	10	70	30	120	46	44	38	M6
05	500	0	10	7.5	10	70	30	120	46	44	38	M6
06	820	-750	10	7.5	10	50	30	120	46	44	38	M6
06	1000	-750	10	7.5	10	50	30	120	46	44	38	M6
06	1250	-750	10	7.5	10	50	30	120	46	44	38	M6
805	1600	-1300	10	7.5	10	50	30	120	46	44	38	M6
805	2000	-1300	10	7.5	10	50	30	120	46	44	38	M6
805	2500	-1300	10	7.5	10	50	30	120	46	44	38	M6

# RF Power Capacitors Class1

## 10kV Hi-Load: Tag-Screw Mounting



The above RF load conditions are based on the maximum body temperature rise of 45°C from an ambient temperature of 30°C.



The measured values mentioned before were determined for test samples and are applicable as standard values. The values were determined on the basis of DIN-/DIN-VDE standards and if these were not available, on the basis of CeramTec standards. The values indicated must not be transferred to arbitrary formats, components or parts featuring different surface qualities. They do not constitute a guarantee for certain properties. We expressly reserve the right to make technical changes.

**CeramTec UK Limited**  
Vauxhall Industrial Estate  
Ruabon  
Wrexham  
LL14 6HY  
United Kingdom  
Phone +44 (0) 1978 810 456  
[electroceramics@ceramtec.co.uk](mailto:electroceramics@ceramtec.co.uk)  
[www.ceramtec.com](http://www.ceramtec.com)