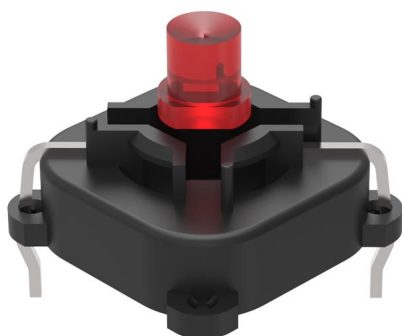


EAO – Your Expert Partner for Human Machine Interfaces

70-820.2S - Illumination element

70-820.2S - Illumination element



Attention: The preview is based on a sample product. This can differ from your current configuration.

Other Attributes

Weight 0,001 kg

Connection Method

Terminal PCB

Illumination

Illumination Single-LED red
LED colour red
Forward voltage typ. 2,0 V DC @ 20 mA

Optics

Lumi. intensity 160 mcd
Dom. wavelength 625 nm

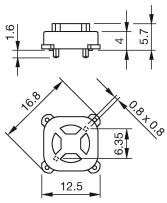
Function

Indicator

EAO – Your Expert Partner for Human Machine Interfaces

70-820.2S - Illumination element

Dimensions



Wiring diagram

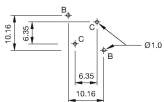


Component layout

Single-LED

Drilling plan (element side)

B Holes for LED
C Holes for centering pins



Additional information

The customer has to decide what series resistor shall be used to the LED

Dimensions with fitted lens see details «Lens»

Luminosity and wave length variations caused by LED manufacturing processes may cause slight differences regarding the illumination