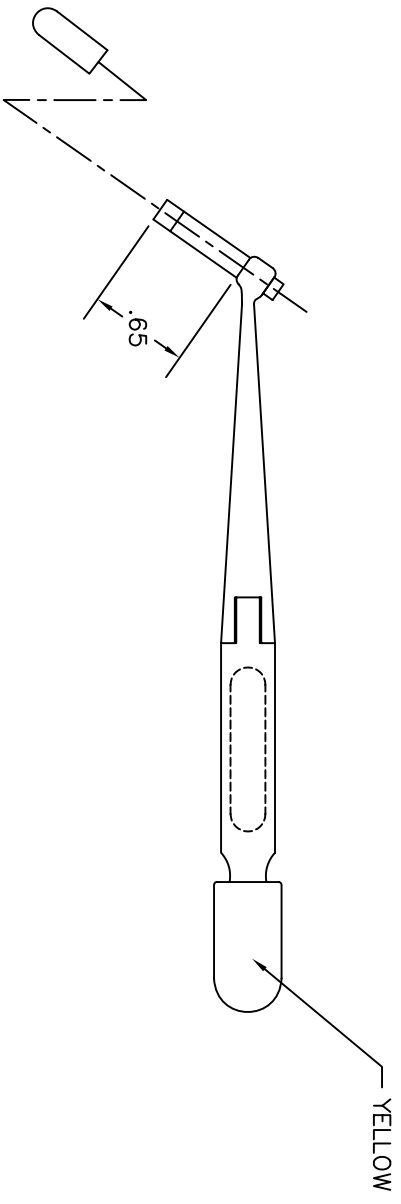
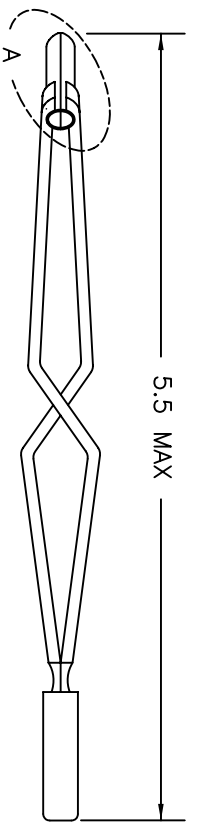
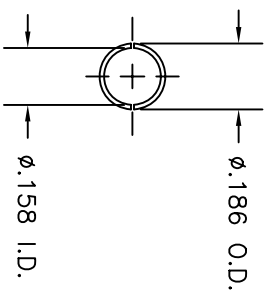


REVISIONS				
REV. NUMBER	E.C.O. NUMBER	DESCRIPTION	BY DATE	APP'D DATE
1		ORIGINAL RELEASE	LGV 6/4/90	JS 6/90



**UNCONTROLLED DOCUMENT
WILL NOT BE UPDATED**

RESTRICTED & CONFIDENTIAL CONFIDENTIAL PROPERTY OF DANIELS MANUFACTURING CORP. NOT TO BE DISCLOSED TO OTHERS, REPRODUCED OR USED FOR ANY OTHER PURPOSE, EXCEPT BY DANIELS MANUFACTURING CORP. MUST BE RETURNED TO DANIELS MANUFACTURING CORP. ON COMPLETION OF ORDER OR OTHER PURPOSE FOR WHICH LENT.		ITEM	PART NO.	QTY.	DESCRIPTION/REMARKS
DRN.	LV	DATE	6/4/90		
CHK'D.	JS	DATE	6/6/90		
APP'D.	AAM	DATE	6/27/90		
APP'D.		DATE			

NOTE: THIS DRAWING IS AN OUTLINE DRAWING OF THE RESPECTIVE DIM PART NUMBER INDICATED. ACTUAL DIM PART NUMBER IS DRAWING NUMBER WITHOUT THE -ENV SUFFIX.		WHERE USED: SIZE SCALE POSTING	CAD P/N DAK95-12B-ENV	SHEET 1	OF 1
DO NOT SCALE DRAWING			DWG. NO. DAK95-12B-ENV	REV. 1	

DMC DANIELS MANUFACTURING CORP.
ORLANDO, FLORIDA
CAGE 11851

TITLE
INSTALLING TOOL
(M81969/8B-09)
ENVELOPE DRAWING