

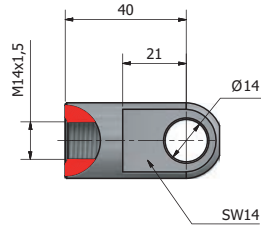
END FITTINGS

Various types for dimension 40-20

E20. Loop M14

Steel
Galvanised

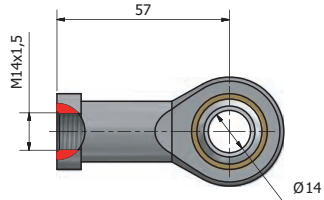
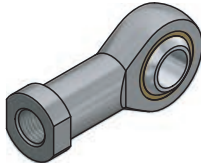
Cat.no: 62100



E21. Loop M14

Steel
Galvanised

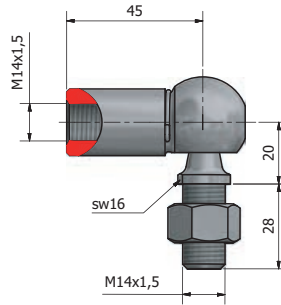
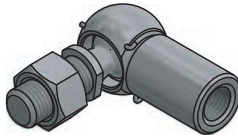
Cat.no: 62101



CS3. Ball joint M14

Steel
Galvanised

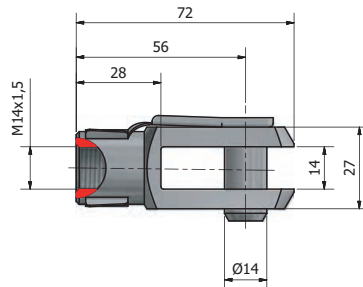
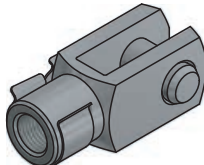
Cat.no: 62102



G13. Clevis Joint M14

Steel
Galvanised

Cat.no: 62103



END FITTINGS

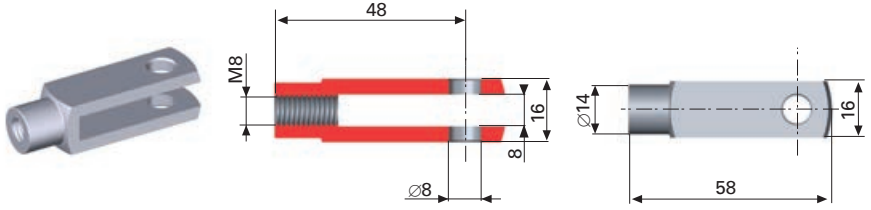
Clevises, locking clips and ball cups



G9. Clevis M8

Steel
Galvanised

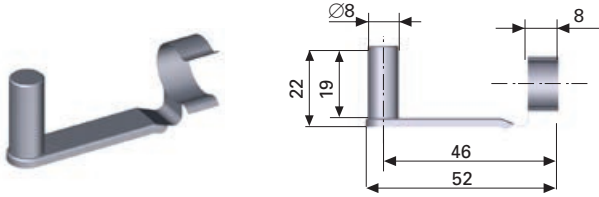
Cat.no: 4214



G10. Locking clip

Steel
Galvanised
Fits G9

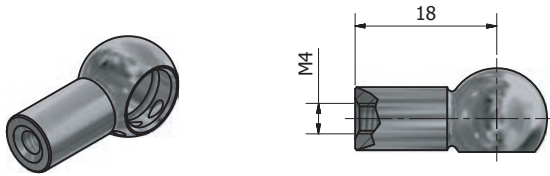
Cat.no: 4215



BC1. Ball cup M4, Ø 8

Steel
Galvanized
Lockwire included

Cat.no: 603



BC2. Ballcup M6, Ø 10

Plastic, black
Locking clip in black galvanised steel

Cat.no: 4597



BC3. Ballcup M6, Ø 10

Plastic, grey
Locking clip chromated steel

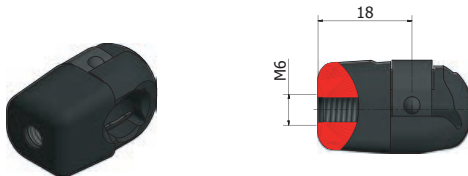
Cat.no: 1114



BC10. Ball cup M6, Ø 10

Plastic, black
Locking clip in black galvanised steel

Cat.no: 5661



BC4. 3. Ballcup M6, Ø 10

Steel
Black chrome

Cat.no: 4594



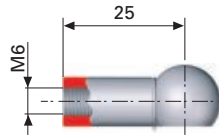
END FITTINGS

Ball cups and ball stud

BC5. Ballcup M6, Ø 10

Steel
Galvanised
Lockwire included

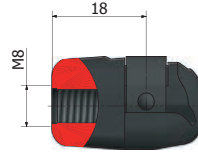
Cat.no: 4615



BC11. Ballcup M8, Ø 10

Plastic, black
Locking clip in black galvanised steel

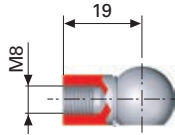
Cat.no: 5662



BC6. Ballcup M8, Ø 10

Steel
Galvanised
Lockwire included

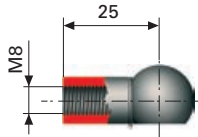
Cat.no: 4602



BC7. Ballcup M8, Ø 13

Steel
Black chrome
Lockwire included

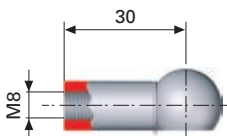
Cat.no: 6651



BC8. Ballcup M8, Ø 13

Steel
Galvanised
Lockwire included

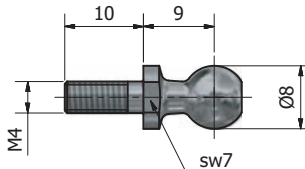
Cat.no: 4599



BS1. Ball stud M4, Ø 8

Steel
Galvanized

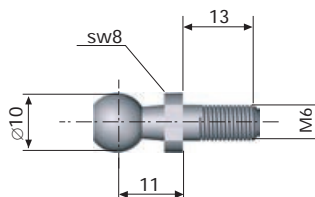
Cat.no: 604



BS2. Ball stud M6, Ø 10

Steel
Galvanised

Cat.no: 4616



END FITTINGS

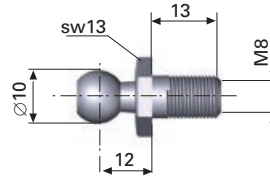
Ball stud and axial links



BS3. Ball stud M8, Ø 10

Steel
Galvanised

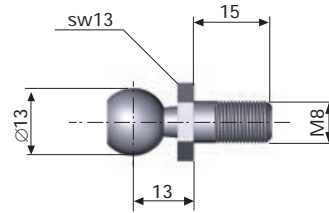
Cat.no: 4610



BS4. Ball stud M8, Ø 13

Steel
Galvanised

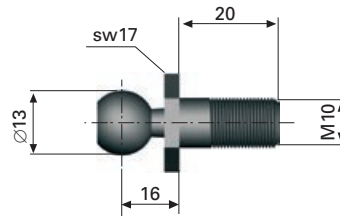
Cat.no: 4611



BS5. Ball stud M10, Ø 13

Steel
Black chrome

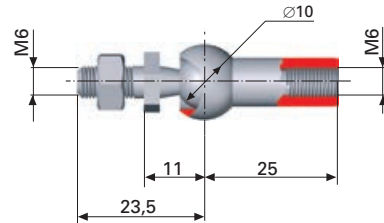
Cat.no: 8272



AX1. Ball link, axial M6

Steel
Galvanised
Including nut
Pull out force 40N

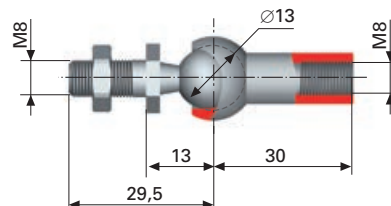
Cat.no: 8960



AX2. Ball link, axial M8

Steel
Galvanised
Including nut
Pull out force 60N

Cat.no: 8961



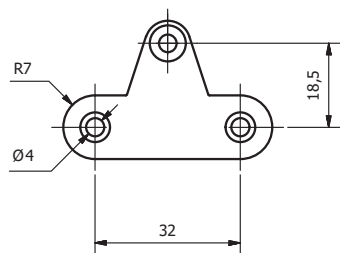
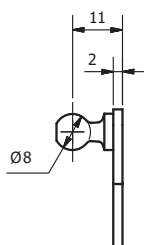
END FITTINGS

Brackets

BK15. Ball bracket $\varnothing 8$

Steel
Galvanized

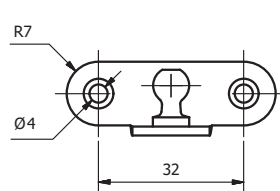
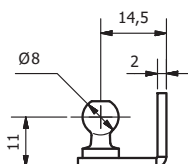
Cat.no: 605



BK16. Ball bracket $\varnothing 8$

Steel
Galvanized

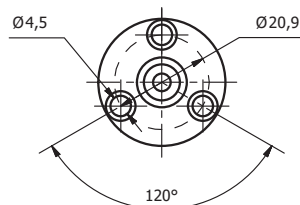
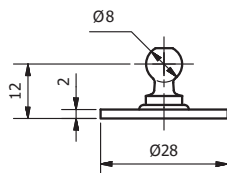
Cat.no: 606



BK17. Ball bracket $\varnothing 8$

Steel
Galvanized

Cat.no: 607



END FITTINGS

Socket ball on plate

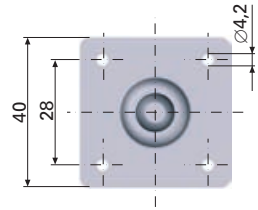
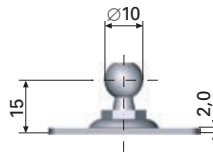
BK8. Socket ball on plate Ø 10

For light applications

Steel

Galvanised

Cat.no: 8273



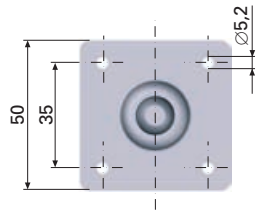
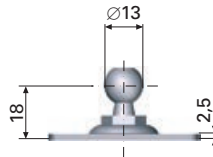
BK9. Socket ball on plate Ø 13

For light applications

Steel

Galvanised

Cat.no: 8274



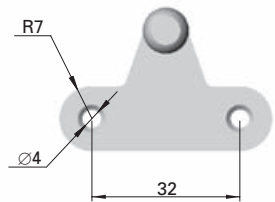
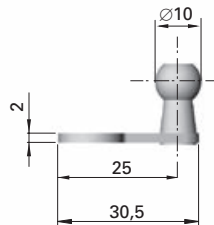
BK10. Socket ball on plate Ø 10

For light applications

Steel

Galvanised

Cat.no: 4625



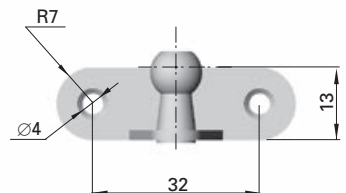
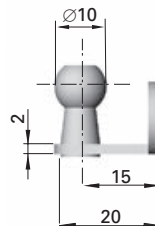
BK11. Socket ball on plate Ø 10

For light applications

Steel

Galvanised

Cat.no: 4626



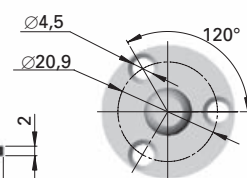
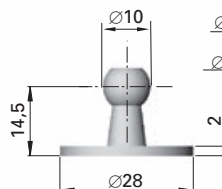
BK12. Socket ball on plate Ø 10

For light applications

Steel

Galvanised

Cat.no: 4627



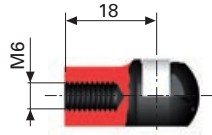
END FITTINGS

Ball cup, ball joint and ball stud - Stainless

BC9. Ballcup M6, Ø 10

Plastic, black
Locking clip STS301
(E No. 1.4310)

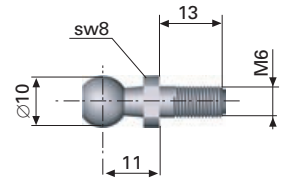
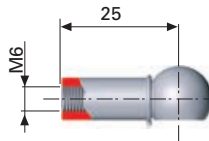
Cat.no: 4629



CS1. Ball joint M6

W 1.4305 (E No. 1.4305)

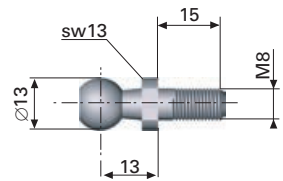
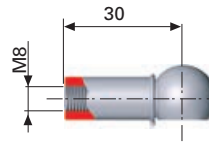
Cat.no: S1131



CS2. Ball joint M8

W 1.4305 (E No. 1.4305)

Cat.no: S1135



BS6. Ball stud M8, Ø 10

W 1.4305 (E No. 1.4305)

Cat.no: S1139

