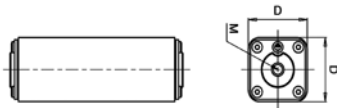
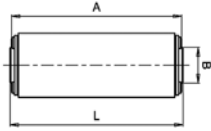
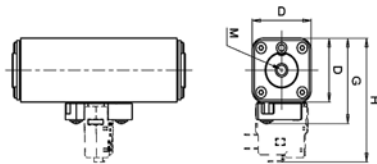
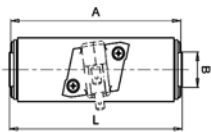


**DC 900 V SQB-DC 90 mit Gewindeanschluß / with flush end connection**



90 350 20



90 350 21

Verpackungseinheit / Packing unit: 2 Stück / 2 pieces

|                                     |  |
|-------------------------------------|--|
| Betriebsklasse / Class<br><b>gR</b> | <b>IEC 60 077-5</b><br><b>VDE 0115-460-5</b><br><b>UIC 550</b> |
|-------------------------------------|--|

| Bemessungs-<br>spannung<br>Rated Voltage | Artikel Nr.<br>Article No | Länge<br>Length |    |    |    |    |     |              |
|--|---------------------------|-----------------|----|----|----|----|-----|--------------|
|  |                           | A               | B  | D  | G  | H  | L   | M            |
| V  |                           | mm              | mm | mm | mm | mm | mm  | mm           |
| DC 900                                   | 90 350 20                 | 124             | 24 | 43 | -  | -  | 126 | M8           |
|  | 90 350 21*                | 124             | 24 | 43 | 58 | 83 | 126 | 10mm<br>tief |

**Bemessungsausschaltvermögen / Rated breaking capacity** 100kA DC 750V (L/R=100ms)  
100kA DC 900V (L/R= 40ms)  
30kA DC 1000V (L/R=10ms)

| Bemessungsstrom<br>Rated Current | Artikel Nr.<br>Article No.     | Gewicht<br>Weight | Schmelzintegral<br>Pre-Arcing-<br>I <sup>2</sup> t-Value | Ausschalt-<br>integral<br>Total I <sup>2</sup> t-Value | Leistungs-<br>abgabe<br>Power Loss |
|----------------------------------|--------------------------------|-------------------|--|--|------------------------------------|
| A                                |                                | kg / 1            | A <sup>2</sup> s   | A <sup>2</sup> s<br>@ DC 1000 V L/R=10ms               | W                                  |
| 50                               | 90 350 20.50    90 350 21.50   | 0,61              | 480  | 3.200  | 11                                 |
| 63                               | 90 350 20.63    90 350 21.63   | 0,61              | 900  | 6.200  | 13                                 |
| 80                               | 90 350 20.80    90 350 21.80   | 0,61              | 1.900  | 13.000   | 16                                 |
| 100                              | 90 350 20.100    90 350 21.100 | 0,61              | 3.600  | 24.500   | 19                                 |
| 125                              | 90 350 20.125    90 350 21.125 | 0,61              | 6.600  | 45.000   | 24                                 |
| 160                              | 90 350 20.160    90 350 21.160 | 0,61              | 11.200   | 76.500   | 31                                 |

\* Anbaumöglichkeit eines Meldeschalters  
suitable for switch fitting

Applikationskoeffizienten / Application coefficients (Weiterführende Informationen siehe Seite 13 / for more information see page 13)

| a   | A2  | B1 max. | B2  | Cf3 |
|-----|-----|---------|-----|-----|
| 130 | 0,6 | 1,25    | 0,5 | 0,8 |

**DC 900 V SQB-DC 90 mit Gewindeanschluß / with flush end connection**

Zeit/Strom-  
Kennlinien  
Time-current  
characteristics

