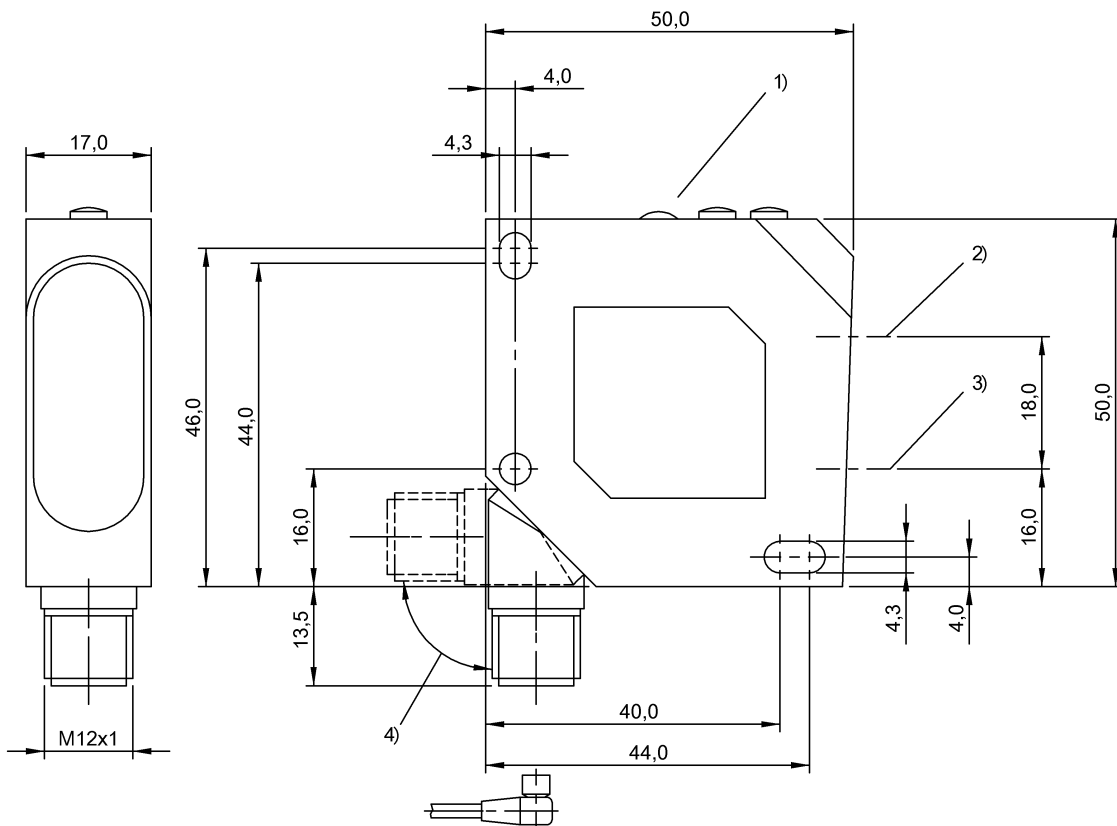


## BOS 26K-PA-1LHB-S4-C BOS008E



1) Display and control panel 2) Optical axis receiver 3) Optical axis emitter 4) rotatable 270°



### Display/Operation

Adjuster	Potentiometer 2-turn (1x)
Setting	Rated switching distance (Sn)

### Electrical connection

Connection	M12x1-Connector, 4-pole, A-coded
Polarity reversal protected	yes
Short-circuit protection	yes

### Electrical data

MTTF (40 °C)	188 a
No-load current $I_0$ max. at $U_e$	50 mA
Operating voltage $U_b$	10...30 VDC
Rated insulation voltage $U_i$	75 V DC
Rated operating current $I_e$ DC	200 mA
Rated operating voltage $U_e$ DC	24 V
Switching frequency	2500 Hz
Turn-off delay $t_{off}$ max.	0.2 ms
Turn-on delay $t_{on}$ max.	0.2 ms
Utilization category	DC -13

Voltage drop  $U_d$  max. at  $I_e$  2.5 V

### Environmental conditions

Ambient temperature	-20...45 °C
Protection class	II
Protection type IEC 60529	IP67

### Functional safety

Diagnostic coverage	0 %
Functional safety	no
Mission Time	10 a

### General data

Approval/Conformity	cULus CE
Basic standard	IEC 60947-5-2
Series	26K
Style	Square Connection can be rotated

## BOS 26K-PA-1LHB-S4-C BOS008E

### Material

Housing material	ABS
Material sensing surface	PMMA

### Mechanical data

Dimension	17 x 50 x 50 mm
Fastening detail	Screw M4

### Optical data

Ambient light max.	5000 Lux
Average power $P_o$ max.	1 mW
Beam characteristic	Focus, typical at 80 mm
Laser class per IEC 60825-1	2
Light type	Laser Red light
Special optical feature	Background suppression
Wave length	670 nm

### Output/Interface

Switching output	PNP Normally closed (NC) PNP Normally open (NO)
------------------	--

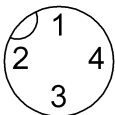
### Range/Distance

Distance deviation 18 % max. (% of Sr)	8 % on 90 % rem.
Measuring range	30...150 mm
Range	30...150 mm
Rated operating distance $S_n$	150 mm, Adjustable
Ripple max. (% of $U_e$ )	10 %

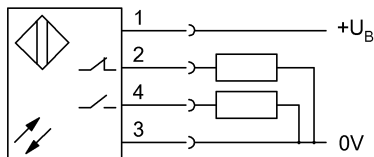
### Remarks

Order accessories separately.  
For additional information, refer to user's guide.  
The sensor is functional again after the overload has been eliminated.  
Reference object (target): gray card, 200 x 200, 90 % remission, axial approach.  
Only for applications per NFPA 79 (machines with a supply voltage of maximum 600 V). Use an R/C (CYJV2) cable with suitable properties for attaching the device.  
For further information on MTTF/B10d, please refer to the MTTF / B10d Certificate.  
Specification of the MTTF value and the B10d value do not represent any binding quality and/or life expectancy guarantees.

### Connector view

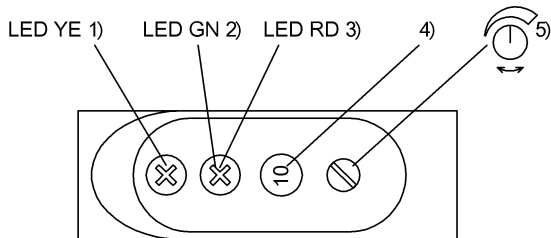


### Wiring Diagram



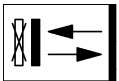
BOS 26K-PA-1LHB-S4-C  
BOS008E

## Additional View

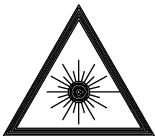


1) Output function 2) Stability 3) Error 4) Switching dist. dig. displ. 5) Sensitivity

## Symbols for Optoelectronic Sensors



## Warning Symbols



LASER BEAM - DO NOT STARE INTO THE LIGHT BEAM!

LASER CLASS 2 per IEC60825-1: 2003-10