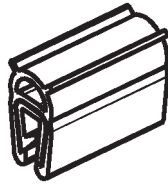
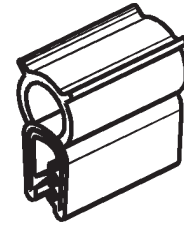


EMC gasketing material



Dimensions
see catalogue page
5A-220
article 1011-10



Dimensions
see catalogue page
5A-220
article 1011-05

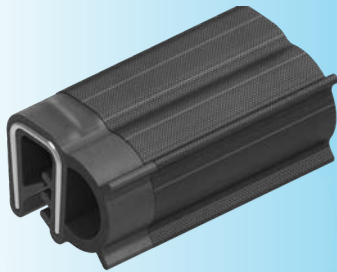
Attention:

Please provide a contact area for all EMC gasketings. For painted or powder coated cabinets see conductive tape.

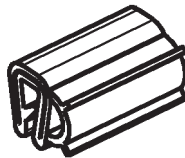
Soft-sponge rubber / EPDM with conductive overall coating and steel spring core

1011-10-E

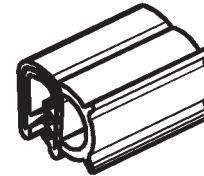
1011-05-E



EMC gasketing material



Dimensions
see catalogue page
5A-240
article 1011-09



Dimensions
see catalogue page
5A-260
article 1011-06

Soft-sponge rubber / EPDM with conductive overall coating and steel spring core

1011-09-E

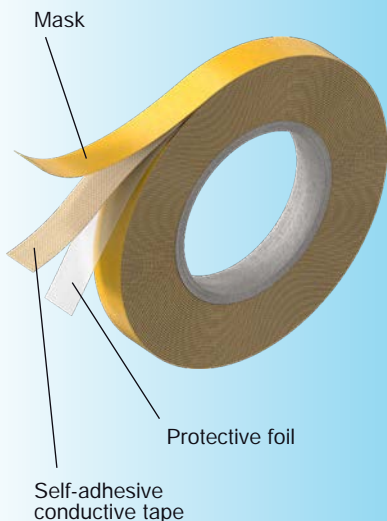
1011-06-E

EMC conductive tape

- for painting and contact
- highly-conductive adhesive for creating paint-free contact areas
- length 25 metres

Note:

- The area to be adhered to has to be free of grease and dust.
 - Remove the protective foil from the conductive tape and adhere it to the contact area. For better adhesion the conductive tape is wider than the mask.
 - Afterwards painting or coating is possible, the mask prevents the coating adhering to the conductive tape.
- Please note the following instructions for heat treatment of the conductive tape: max. 90°C permanent heat; higher short-term load possible; each time individual testing is necessary.
- After painting or powder coating the mask can be removed easily, the conductive tape is left securely in place.



EMC conductive tape

width of tape (mm)	in combination with EMC gasketing	
12,7	--	1016-220-127E
22	1011-09-E; 1011-10-E	1016-220-220E
25,4	1011-05-E; 1011-06-E	1016-220-254E
Further dimensions on request		