

# Rittal – The System.

Faster – better – everywhere.

## ► **Component Shelf, Static Installation For 482.6 mm (19") system punching, depth-variable for TS IT, TE – DK 5501.665**

Date : Mar 5, 2020

ENCLOSURES

POWER DISTRIBUTION

CLIMATE CONTROL

IT INFRASTRUCTURE

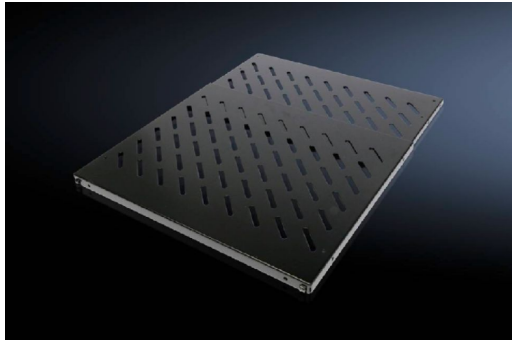
SOFTWARE & SERVICES

FRIEDHELM LOH GROUP



# Component Shelf, Static Installation For 482.6 mm (19") system punching, depth-variable for TS IT, TE – DK 5501.665

: 05.03.2020 build on [www.rittal.com/ca-en](http://www.rittal.com/ca-en)



## Product description

<b>Benefits:</b>	Tool-free, time-saving one-person assembly
<b>Applications:</b>	Depth-variable to adapt to individual distances between levels
<b>Material:</b>	Carbon steel
<b>Surface finish:</b>	Spray-finished
<b>Color:</b>	RAL 9005
<b>Supply includes:</b>	Assembly components

## Product features

<b>Suitable for:</b>	Enclosure type: TS IT Enclosure type: TE 7000 Enclosure type: TE 8000
<b>Dimensions:</b>	Width: 484 mm (19 ")
<b>Installation options:</b>	482.6 mm (19") L-profile rails, front and rear 482.6 mm (19") mounting frames, front and rear
<b>Distance between levels:</b>	min.: 600 mm (24 ") max.: 900 mm (35 ")

<b>Height units:</b>	0.5 U
<b>Load capacity:</b>	50 kg
<b>Packaging unit:</b>	1 pc(s).
<b>Weight/packaging unit:</b>	4.64 kg (10.2 lb.)
<b>Copper weight (kg per piece):</b>	0
<b>EAN:</b>	4028177679108
<b>Customs tariff number:</b>	73269098
<b>ETIM 7.0:</b>	EC002620
<b>ETIM 6.0:</b>	EC002620
<b>eCl@ss 8.0/8.1:</b>	27189261
<b>eCl@ss 6.0/6.1:</b>	27189261
<b>Product description:</b>	DK Component shelf, WxH: 484 mm x 0,5 U, 50 kg, distance between levels: 600-900 mm, depth-variable, RAL 9005