

Push Button Switches – 3292

3292

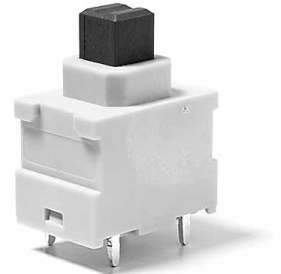
- Characteristics
- Double pole 3292
 - ON/OFF
 - Quick connect
 - PCB terminals
 - Extended life of 50,000 cycles
 - Snap-in mounting or customized
 - Optional with momentary function
 - Special buttons on request
-

Rating 125 VAC, 12 A ½ HP for 3290

Dimensions (mm) Various

Actuator Push button square 6 mm

Approvals ENEC



Preferred Product Range

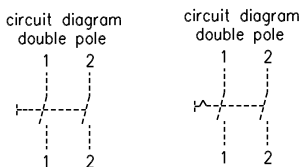
Ordering Reference	Terminals	Mounting	Button length		Function
			(mm)	(in)	
3292-002.04 2541	Faston 4.8 mm, button side	Snap-in	8	0.315	On-off

Push Button Switches – 3292

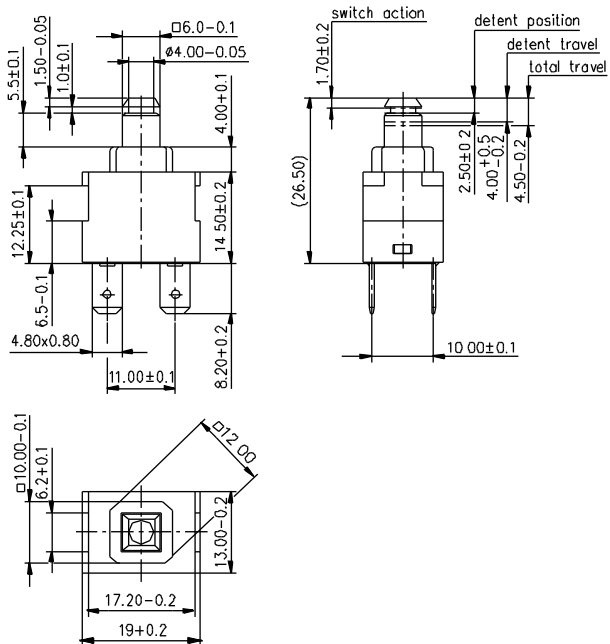
Specifications

Base	PA
Button	PA
Mechanism	Double pole
Functions	ON/OFF Momentary NO
Contacts	Ag/Ni
Protection	IP 00
Mounting	Customized
Tracking Resistance	PTI 250
Glow-wire	850°C
Contact	gap 3 mm
Operating travel	4.5 mm ± 0.2

Circuit diagram



Dimensions mm [in]

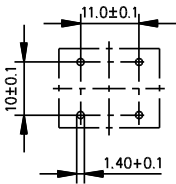


Push Button Switches – 3292

Ordering Reference – How to Build a Part Number

Type	3292		
Illumination	None		
Terminals	4.8 x 0.8 mm PCB		
Mounting	Customized		
Button	Brown		
Housing	Beige		
Approvals	250 VAC, 8 (8) A 5E4 T100	ENEC	
	250 VAC, 10 (10) A 1E4 T100	ENEC	

PCB-configuration 3292-...



Preferred Product Range

Ordering Reference	Terminals	Mounting	Button length (mm)	(in)	Function
3292-001.03 2541	Faston 4.8 mm, button side	Frameless	5.5	0.216	On-off
3292-011.02 2841	PCB, button side	Frameless	5.5	0.216	On-off
3292-012.02 2841	PCB, button side	Frameless	8.0	0.315	On-off