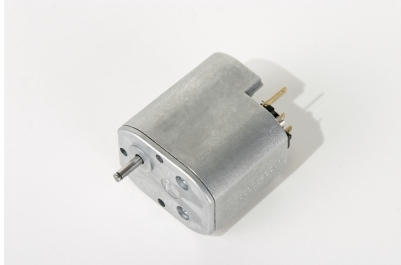


1.61.065.XXX DC gear motor



- Compact gear motor
- Up to 420 mNm
- 29mm wide
- Low noise, reversible

Description

A compact gear motor.

All metal housing with metal and plastic gears

2 pole metal cased motor with carbon brushes

Technical data

Voltage DC	Part number	Rated current Amps	Rated torque mNm	Rated speed rpm	No load speed rpm	Max torque mNm	Gear ratio	Gear stages
6V	1.61.065.403	0.333	45	136	190	63	27.4	4
6V	1.61.065.404	0.333	90	64	91	126	56.6	5
6V	1.61.065.405	0.280	150	34	44	210	116.9	6
6V	1.61.065.406	0.240	200	18	22	280	241.5	7
6V	1.61.065.407	0.170	200	9.5	10.5	280	499.2	8
6V	1.61.065.408	0.170	300	4.6	5.1	420	1031.6	9
12V	1.61.065.423	0.170	45	136	190	63	27.4	4
12V	1.61.065.424	0.170	90	64	91	126	56.6	5
12V	1.61.065.425	0.140	150	34	44	210	116.9	6
12V	1.61.065.426	0.120	200	18	22	280	241.5	7
12V	1.61.065.427	0.075	200	9.5	10.5	280	499.2	8
12V	1.61.065.428	0.075	300	4.6	5.1	420	1031.6	9
18V	1.61.065.443	0.120	45	136	190	63	27.4	4
18V	1.61.065.444	0.120	90	64	91	126	56.6	5
18V	1.61.065.445	0.100	150	34	44	210	116.9	6
18V	1.61.065.446	0.080	200	18	22	280	241.5	7
18V	1.61.065.447	0.065	200	9.5	10.5	280	499.2	8
18V	1.61.065.448	0.065	300	4.6	5.1	420	1031.6	9
24V	1.61.065.463	0.090	45	136	202	63	27.4	4
24V	1.61.065.464	0.090	90	64	97	126	56.6	5
24V	1.61.065.465	0.080	150	34	47	210	116.9	6
24V	1.61.065.466	0.065	200	18	23	280	241.5	7
24V	1.61.065.467	0.044	200	9.5	11	280	499.2	8
24V	1.61.065.468	0.044	300	4.6	5.1	420	1031.6	9
Temperature range						°C	-10 to +70	
Axial force						N	30	
Radial force (5mm from mounting surface)						N	100	

All performance figures are recorded at an ambient temperature of 25°C

Information

Weight	150g
Gear Housing	Zinc die cast
Commutator	3 segment copper
RFI Protection	VDR
Insulation class	winding F, other A
Protection class	IP20
Commutation	carbon brushes
Armature	straight slot
Magnet	permanent magnet, 2 poles
Bearings	sintered bronze
Motor housing	corrosion protected steel
Motor end shields	brush end plastic, drive end zinc die cast
Spur gear	metal and plastic
Output shaft axial play	0.05 - 0.6mm

Dimensions

