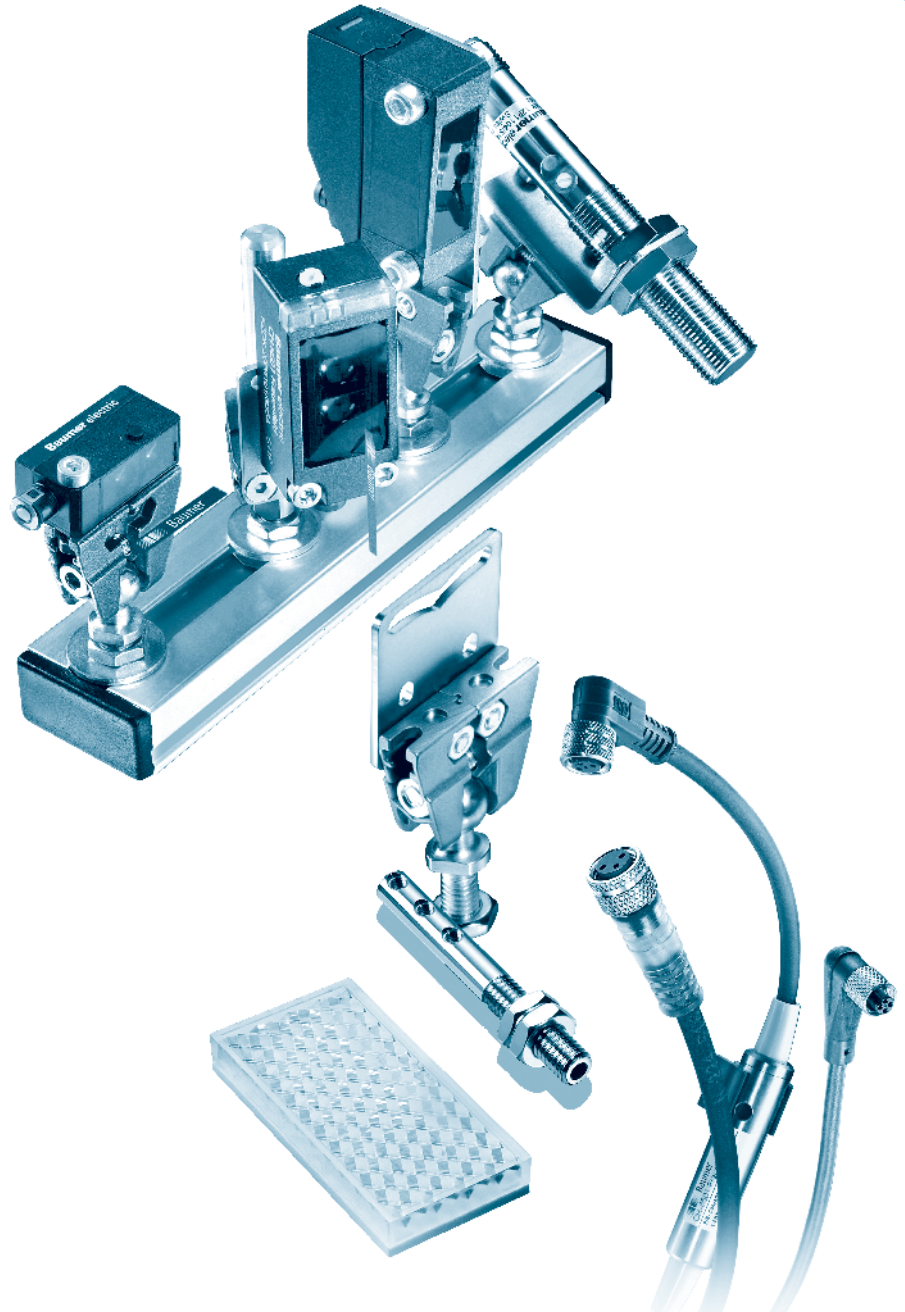
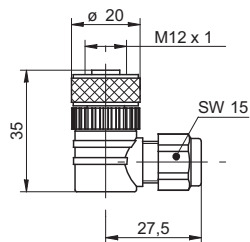


Accessories



Connectors and mating connectors	Page 420
Connectors/Pin assignment	Page 425
Reflectors	Page 426
Divers	Page 431
Mounting	Page 433
Mounting kits Sensofix	Page 437
Hygienic and washdown	Page 439
Fiber optics	Page 441

ES 14 - Cable socket M12 angular, not pre-assembled

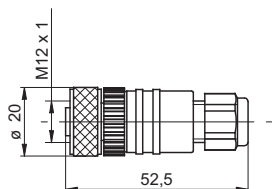


order reference

ES 14 PG7	Connector M12, 4 pin, angular
ES 14C PG7	Connector M12, 5 pin, angular

- Connector unshielded
- Connector only, no cable supplied
- 4 and 5 pin versions

ES 18 - Cable socket M12 straight, not pre-assembled

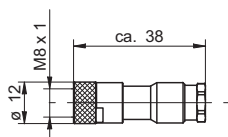


order reference

ES 18 PG7	Connector M12, 4 pin, straight
ES 18C PG7	Connector M12, 5 pin, straight

- Connector unshielded
- Connector only, no cable supplied
- 4 and 5 pin versions

ES 21 - Cable socket M8 straight, not pre-assembled

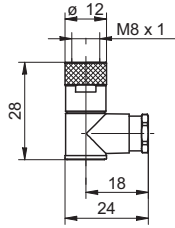


order reference

ES 21	Connector M8, 3 pin, straight
ES 21A	Connector M8, 4 pin, straight

- Connector unshielded
- Connector only, no cable supplied
- 3 and 4 pin version

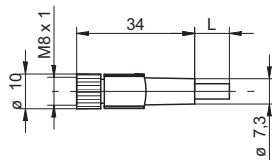
ES 22 - Cable socket M8 angular, not pre-assembled



order reference	
ES 22	Connector M8, 3 pin, angular
ES 22A	Connector M8, 4 pin, angular

- Connector unshielded
- Connector only, no cable supplied
- 3 and 4 pin versions

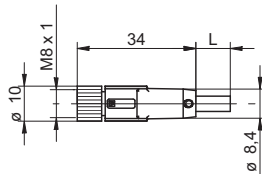
ESG 32 - Connector M8 straight



order reference	
ESG 32AH0200	Connector M8, 4 pin, straight, 2 m
ESG 32AH0500	Connector M8, 4 pin, straight, 5 m
ESG 32AH1000	Connector M8, 4 pin, straight, 10 m
ESG 32SH0200	Connector M8, 3 pin, straight, 2 m
ESG 32SH0500	Connector M8, 3 pin, straight, 5 m
ESG 32SH1000	Connector M8, 3 pin, straight, 10 m

- Connector unshielded
- 3 and 4 pin versions
- Cable coating PUR
- Halogen-free
- Suitable for flexible cable carriers
- UL listed, number E315836

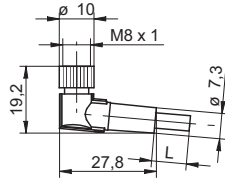
ESG 32G - Connector M8 straight, shielded



order reference	
ESG 32AH0200G	Connector M8, 4 pin, straight, 2 m, shielded
ESG 32AH0500G	Connector M8, 4 pin, straight, 5 m, shielded
ESG 32AH1000G	Connector M8, 4 pin, straight, 10 m, shielded
ESG 32SH0500G	Connector M8, 3 pin, straight, 5 m, shielded
ESG 32SH1000G	Connector M8, 3 pin, straight, 10 m, shielded

- Connector shielded, screen connected with cap nut
- 3 and 4 pin versions
- Cable coating PUR
- Halogen-free
- Suitable for flexible cable carriers
- UL listed, number E315836

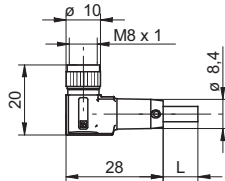
ESW 31 - Connector M8 angular



- Connector unshielded
- 3 and 4 pin versions
- Cable coating PUR
- Halogen-free
- Suitable for flexible cable carriers
- UL listed, number E315836

order reference	
ESW 31AH0200	Connector M8, 4 pin, angular, 2 m
ESW 31AH0500	Connector M8, 4 pin, angular, 5 m
ESW 31AH1000	Connector M8, 4 pin, angular, 10 m
ESW 31SH0200	Connector M8, 3 pin, angular, 2 m
ESW 31SH0500	Connector M8, 3 pin, angular, 5 m
ESW 31SH1000	Connector M8, 3 pin, angular, 10 m

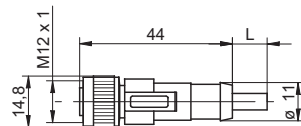
ESW 31G - Connector M8 angular, shielded



- Connector shielded, screen connected with cap nut
- 3 and 4 pin versions
- Cable coating PUR
- Halogen-free
- Suitable for flexible cable carriers
- UL listed, number E315836

order reference	
ESW 31AH0200G	Connector M8, 4 pin, angular, 2 m, shielded
ESW 31AH0500G	Connector M8, 4 pin, angular, 5 m, shielded
ESW 31AH1000G	Connector M8, 4 pin, angular, 10 m, shielded
ESW 31SH0200G	Connector M8, 3 pin, angular, 2 m, shielded
ESW 31SH0500G	Connector M8, 3 pin, angular, 5 m, shielded

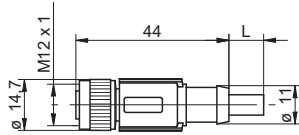
ESG 34 - Connector M12 straight



- Connector unshielded
- 3, 4 and 5 pin versions
- Cable coating PUR
- Halogen-free
- Suitable for flexible cable carriers
- UL listed, number E315836

order reference	
ESG 34AH0200	Connector M12, 4 pin, straight, 2 m
ESG 34AH0500	Connector M12, 4 pin, straight, 5 m
ESG 34AH1000	Connector M12, 4 pin, straight, 10 m
ESG 34CH0200	Connector M12, 5 pin, straight, 2 m
ESG 34CH0500	Connector M12, 5 pin, straight, 5 m
ESG 34SH0200	Connector M12, 3 pin, straight, 2 m
ESG 34SH0500	Connector M12, 3 pin, straight, 5 m
ESG 34SH1000	Connector M12, 3 pin, straight, 10 m

ESG 34G - Connector M12 straight, shielded

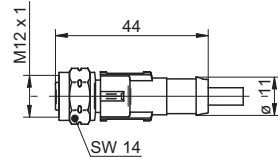


- Connector shielded, screen connected with cap nut
- 4, 5 and 8 pin versions
- Cable coating PUR
- Halogen-free
- Suitable for flexible cable carriers
- UL listed, number E315836

order reference

ESG 34AH0200G	Connector M12, 4 pin, straight, 2 m, shielded
ESG 34AH0500G	Connector M12, 4 pin, straight, 5 m, shielded
ESG 34AH1000G	Connector M12, 4 pin, straight, 10 m, shielded
ESG 34CH0200G	Connector M12, 5 pin, straight, 2 m, shielded
ESG 34CH0500G	Connector M12, 5 pin, straight, 5 m, shielded
ESG 34CH1000G	Connector M12, 5 pin, straight, 10 m, shielded
ESG 34FH0200G	Connector M12, 8 pin, straight, 2 m, shielded
ESG 34FH0500G	Connector M12, 8 pin, straight, 5 m, shielded
ESG 34FH1000G	Connector M12, 8 pin, straight, 10 m, shielded

ESG 34F - Connector M12 straight, PVC/V4A

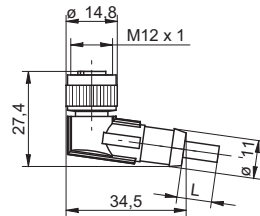


- Connector unshielded
- 4 pin version
- Cable coating PVC
- Cap nut material in stainless steel V4A
- Ecolab certified and FDA conform
- UL listed, number E315836

order reference

ESG 34AF0200	Connector M12, 4 pin, straight, 2 m, V4A-PVC
ESG 34AF0500	Connector M12, 4 pin, straight, 5 m, V4A-PVC
ESG 34AF1000	Connector M12, 4 pin, straight, 10 m, V4A-PVC
ESG 34AF2500	Connector M12, 4 pin, straight, 25 m, V4A-PVC

ESW 33 - Connector M12 angular

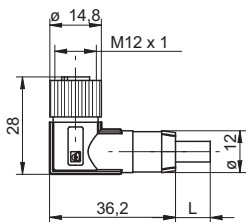


- Connector unshielded
- 3, 4 and 5 pin versions
- Cable coating PUR
- Halogen-free
- Suitable for flexible cable carriers
- UL listed, number E315836

order reference

ESW 33AH0200	Connector M12, 4 pin, angular, 2 m
ESW 33AH0500	Connector M12, 4 pin, angular, 5 m
ESW 33AH1000	Connector M12, 4 pin, angular, 10 m
ESW 33CH0200	Connector M12, 5 pin, angular, 2 m
ESW 33CH0500	Connector M12, 5 pin, angular, 5 m
ESW 33SH0200	Connector M12, 3 pin, angular, 2 m
ESW 33SH0500	Connector M12, 3 pin, angular, 5 m
ESW 33SH1000	Connector M12, 3 pin, angular, 10 m

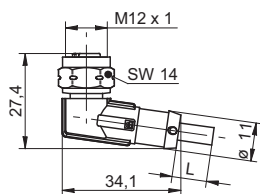
ESW 33G - Connector M12 angular, shielded



order reference	
ESW 33AH0200G	Connector M12, 4 pin, angular, 2 m, shielded
ESW 33AH0500G	Connector M12, 4 pin, angular, 5 m, shielded
ESW 33AH1000G	Connector M12, 4 pin, angular, 10 m, shielded
ESW 33CH0500G	Connector M12, 5 pin, angular, 5 m, shielded
ESW 33FH0200G	Connector M12, 8 pin, angular, 2 m, shielded
ESW 33FH0500G	Connector M12, 8 pin, angular, 5 m, shielded
ESW 33FH1000G	Connector M12, 8 pin, angular, 10 m, shielded

- Connector shielded, screen connected with cap nut
- 4, 5 and 8 pin versions
- Cable coating PUR
- Halogen-free
- Suitable for flexible cable carriers
- UL listed, number E315836

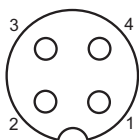
ESW 33F - Connector M12 angular, PVC/V4A



order reference	
ESW 33AF0200	Connector M12, 4 pin, angular, 2 m, V4A-PVC
ESW 33AF0500	Connector M12, 4 pin, angular, 5 m, V4A-PVC
ESW 33AF2500	Connector M12, 4 pin, angular, 25 m, V4A-PVC

- Connector unshielded
- 4 pin version
- Cable coating PVC
- Cap nut material in stainless steel V4A
- Ecolab certified and FDA conform
- UL listed, number E315836

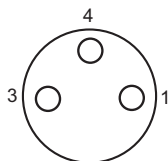
3 pin



- 1 = BN
- 2 = n.c.
- 3 = BU
- 4 = WH

ESG 34
ESW 33

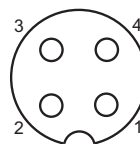
3 pin



- 1 = BN
- 3 = BU
- 4 = BK

ES 21
ES 22
ESG 32
ESG 32G
ESW 31
ESW 31G

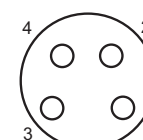
4 pin



- 1 = BN (+Vs)
- 2 = WH (output)
- 3 = BU (0V)
- 4 = BK (output)

ES 14
ES 18
ESG 34
ESG 34F
ESG 34G
ESW 33
ESW 33F
ESW 33G

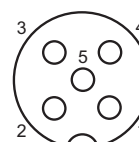
4 pin



- 1 = BN
- 2 = WH
- 3 = BU
- 4 = BK

ES 21A
ES 22A
ESG 32
ESG 32G
ESW 31
ESW 31G

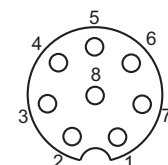
5 pin



- 1 = BN
- 2 = WH
- 3 = BU
- 4 = BK
- 5 = GY

ES 14C
ES 18C
ESG 34
ESG 34G
ESW 33
ESW 33G

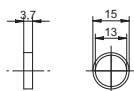
8 pin



- 1 = WH
- 2 = BN
- 3 = GN
- 4 = YE
- 5 = GY
- 6 = PK
- 7 = BU
- 8 = RD

ESG 34G
ESW 33G

FTAR 013

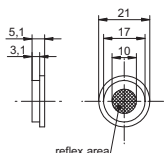


- Fastening method self-adhesive
- Micro structure
- For Retro-reflective sensors

order reference

FTAR 013A000 Reflector round Ø 15 mm

FTAR 014

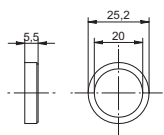
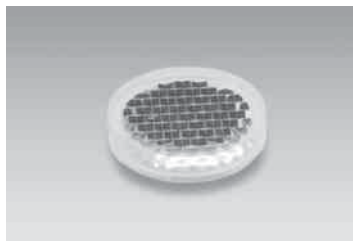


- Fastening method self-adhesive
- For Retro-reflective sensors

order reference

FTAR 014A000 Reflector round Ø 21 mm

FTAR 020

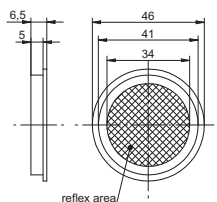


- Fastening method self-adhesive
- Micro structure
- For Retro-reflective sensors

order reference

FTAR 020A000 Reflector round Ø 25,2 mm

FTAR 038

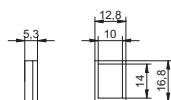


- Fastening method self-adhesive
- For Retro-reflective sensors

order reference

FTAR 038A000 Reflector round Ø 46 mm

FTDR 010A

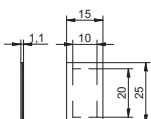


- Fastening method self-adhesive
- For Retro-reflective sensors

order reference

FTDR010A014 Reflector rectangular 16,8 x 12,8 mm

FTDR 010D

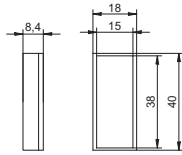
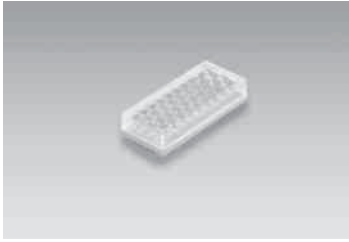


- Fastening method self-adhesive
- For laser light sensors

order reference

FTDR 010D020 Reflector rectangular 15 x 25 mm

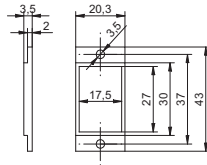
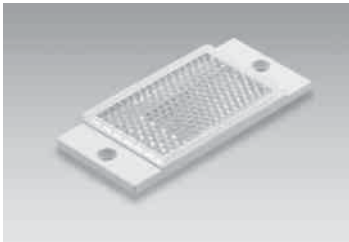
FTDR 015



- Fastening method self-adhesive
- For Retro-reflective sensors

order reference
 FTDR015A038 Reflector rectangular 40 x 18 mm

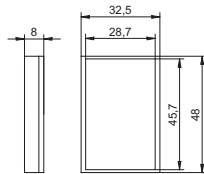
FTDR 017



- Fastening method screw mounting
- Micro structure
- For Retro-reflective sensors

order reference
 FTDR017A027 Reflector rectangular 43 x 20,3 mm

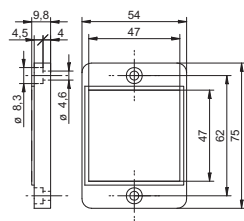
FTDR 029



- Fastening method self-adhesive
- For Retro-reflective sensors

order reference
 FTDR 029A046 Reflector rectangular 48 x 32,5 mm

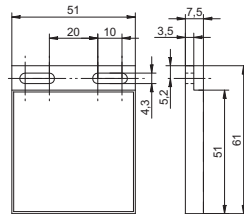
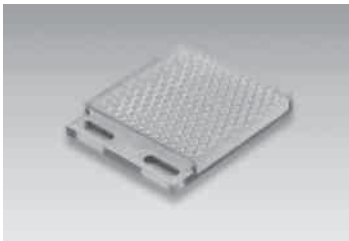
FTDR 047



- Fastening method screw mounting
- For Retro-reflective sensors

order reference
 FTDR 047A048 Reflector rectangular 75 x 54 mm

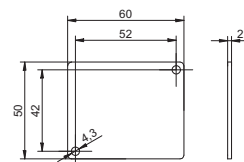
FTDR 051



- Detergent resistant reflecteur
- Ecolab approved
- For Retro-reflective sensors

order reference
 FTDR 051E051 Ecolab approved reflecteur

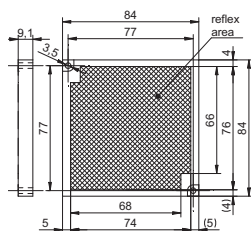
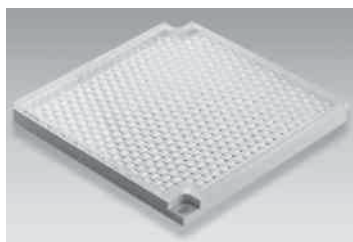
FTDR 050



- Stainless steel reflector for SmartReflect in washdown design
- Material: Stainless steel V4A

order reference
 FTDR 050R060 Stainless steel reflector for SmartReflect in washdown design

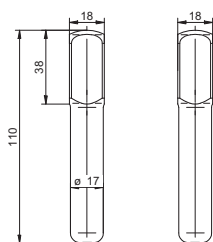
FTDR 084



- Fastening method screw mounting
- For Retro-reflective sensors

order reference
 FTDR 084A084 Reflector rectangular 84 x 84 mm

FTDR 017W



- Stainless steel reflector for SmartReflect in hygiene design
- EHEDG-certified

Accessorie: "mounting for sensors in hygienic design Ø17", order reference HI17-1H

order reference
 FTDR 017W035 Stainless steel reflector for SmartReflect in hygiene design

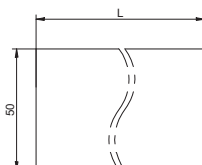
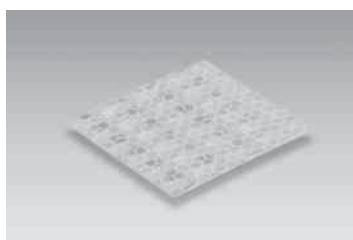
FTDF 020F



- Fastening method self-adhesive
- For laser light sensors

order reference
 FTDF 020F020 Reflective type rectangular 20 x 20 mm

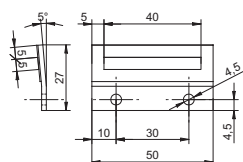
FTDL 050



- Fastening method self-adhesive
- For Retro-reflective sensors

order reference
 FTDL 050K000/... m Reflective type by the meter 50 x ... mm

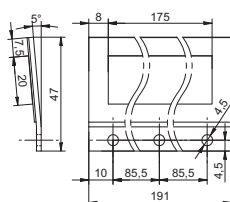
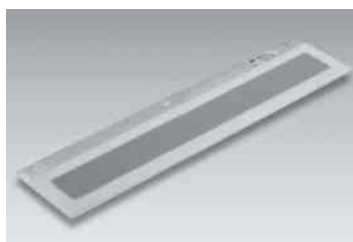
FTDR 005



- Fastening method screw mounting
- For pocket-size line sensor *PosCon*

order reference
 FTDR 005I040 Reflector rectangular 50 x 27 mm

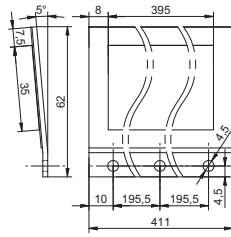
FTDR 020



- Fastening method screw mounting
- For pocket-size line sensor *PosCon*

order reference
 FTDR 020I175 Reflector rectangular 191 x 47 mm

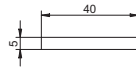
FTDR 035



- Fastening method screw mounting
- For pocket-size line sensor *PosCon*

order reference
 FTDR 035I395 Reflector rectangular 411 x 62 mm

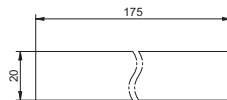
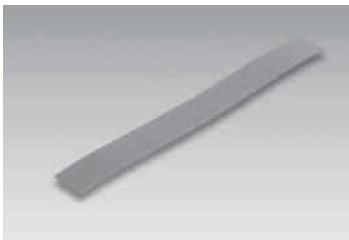
FTDF 005



- Fastening method self-adhesive
- For pocket-size line sensor *PosCon*

order reference
 FTDF 005I040 Reflective type rectangular 40 x 5 mm

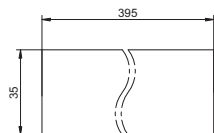
FTDF 020



- Fastening method self-adhesive
- For pocket-size line sensor *PosCon*

order reference
 FTDF 020I175 Reflective type rectangular 175 x 20 mm

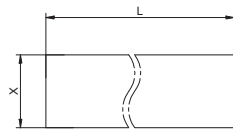
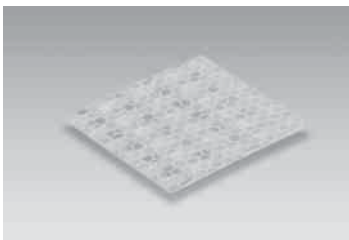
FTDF 035I



- Fastening method self-adhesive
- For pocket-size line sensor *PosCon*

order reference
 FTDF 035I395 Reflective type rectangular 335 x 35 mm

FTDL

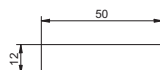


- Fastening method self-adhesive, for pocke-size line sensor *PosCon*

order reference

FTDL 005I000/... m	Reflective type by the meter 5 mm (x) wide
FTDL 020I000/... m	Reflective type by the meter 20 mm (x) wide
FTDL 035I000/... m	Reflective type by the meter 35 mm (x) wide
FTDL 050I000/... m	Reflective type by the meter 50 mm (x) wide
FTDL 610I000/... m	Reflective type by the meter 50 mm (x) wide

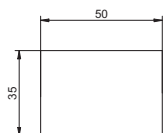
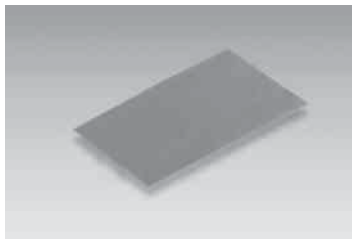
FTDF 012



- Fastening method self-adhesive
- For pocket-size line sensor *ParCon*

order reference
 FTDF 012M050 Reflective type rectangular 50 x 12 mm

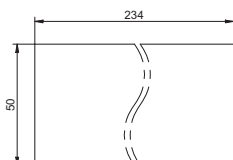
FTDF 035



- Fastening method self-adhesive
- For pocket-size line sensor *ParCon*

order reference
 FTDF 035M050 Reflective type rectangular 50 x 34 mm

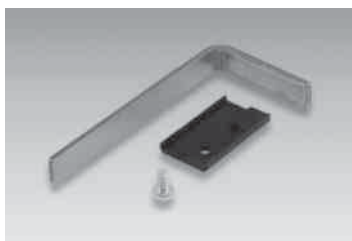
FTDF 050



- Fastening method self-adhesive
- For pocket-size line sensor *ParCon*

order reference
 FTDF 050M234 Reflective type rectangular 50 x 234 mm

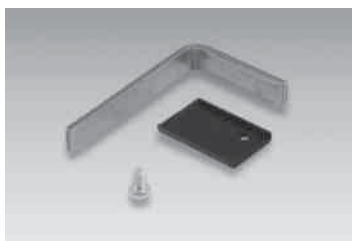
FTDR 008/01



- Bracket with reflector film
- For pocket-size line sensor *ParCon*

order reference
 FTDR 008M030/01 Reflector bracket high

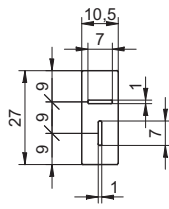
FTDR 008/21



- Bracket with reflector film
- For pocket-size line sensor *ParCon*

order reference
 FTDR 008M030/21 Reflector bracket lateral

Slot aperture stickers series 14



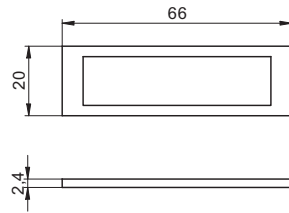
- Material: Polyester foil
- Contents: 2 pieces
- self-adhesive

For use with FSDK 14 / FEDK 14

order reference

10144075 Slot aperture stickers series 14

Protector cap for OxDM 20

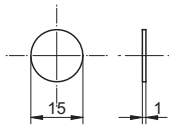


- Material: PMMA
- Self-adhesive

order reference

10156878 Protector cap OxDM 20

Glass cover for sensors series 18



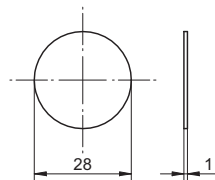
- Material: glass

For use with cap nut series 18

order reference

10103068 Glass cover series 18

Glass cover for sensors series 30



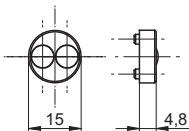
- Material: glass

For use with cap nut series 30

order reference

10103226 Glass cover series 30

Doubling lens for sensors serie 18



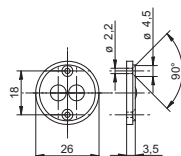
- Material: PBTP / glass
- For double the sensing distance FZAM 18

For use with FZAM 18

order reference

10107250 Doubling lens series 18 FZAM 18

Doubling lens for sensors serie 30



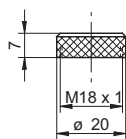
- Material: PC / glass
- For double the sensing distance FZAM 30

For use with FZAM 30

order reference

10107408 Doubling lens series 30 FZAM 30

Cap nut for photoelectric sensors series 18



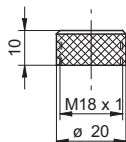
- Material: Nickel-plated brass

For use with FZAM 18 (with glass cover)

order reference

10103067 Cap nut glass cover for sensors series 18

Cap nut for photoelectric sensors series 18



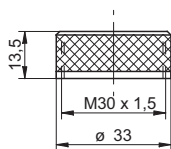
- Material: Nickel-plated brass

For use with FZAM 18 (with doubling lens)

order reference

10115913 Cap nut glass cover and doubling lens for sensors series 18

Cap nut for photoelectric sensors series 30



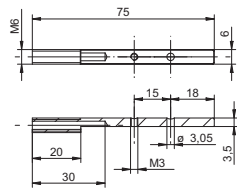
- Material: Nickel-plated brass

For use with FZAM 30 (with glass cover)

order reference

10102801 Cap nut glass cover for sensors series 30

Mounting brad FHDK 04



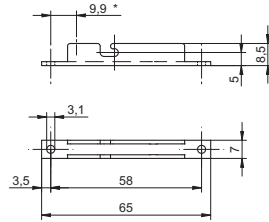
- Material: Nickel-plated steel

For use with FHDK 04

order reference

10163196 Mounting brad FHDK 04

Bracket for profiles sensor series 04



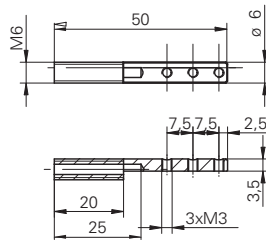
- Material: Aluminum

For use with FHDK 04

order reference

10163299 Bracket for profiles FHDK 04

Minofix-Mounting kit for MINOS



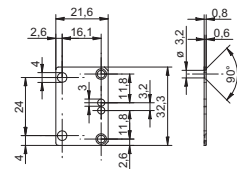
- Material: brass nickel-plated

For use with FxxK 07 (MINOS)

order reference

10150844 Minofix mounting 07

Mounting panel for sensors series 10

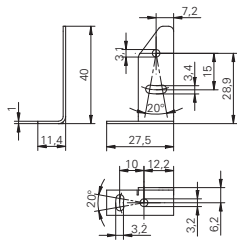


For use with UxDK 10, FxDK 10, OxDK 10

order reference

10162083 Mounting panel for sensors series 10

Mounting bracket for sensors series 10



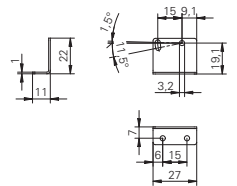
- Material: Steel

For use with UxDK 10, FxDK 10, OxDK 10

order reference

10118798 Mounting bracket series 10

Mounting bracket for sensors series 10 (L design)



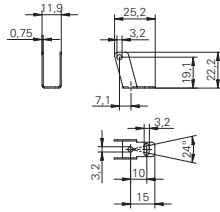
- Material: Steel

For use with UxDK 10, FxDK 10, OxDK 10

order reference

10133792 Mounting bracket series 10 L design

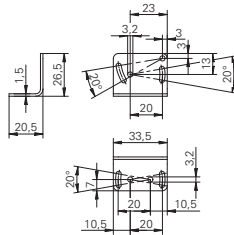
Mounting bracket for sensors series 10 (U design)



- Material: Steel
- For use with UxDK 10, FxDK 10, OxDK 10 (only cable versions)

order reference
10114501 Mounting bracket series 10 (U design)

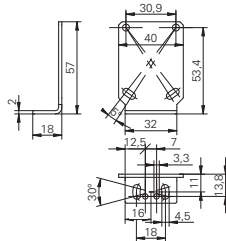
Mounting bracket for sensors series 12



- Material: Steel
- For use with FxDM 12, OxDM 12

order reference
10113873 Mounting bracket series 12 (L design)

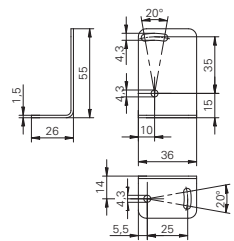
Mounting bracket for sensors series 13



- Material: Steel
- For use with OxDM 13

order reference
10161695 Mounting bracket for sensors series 13 (L design)

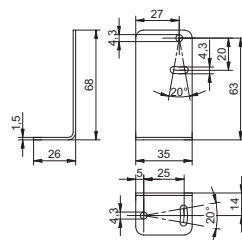
Mounting bracket for sensors series 14



- Material: Steel
- For use with FxDK 14, OxDK 14

order reference
10134964 Mounting bracket series 14 (L design)

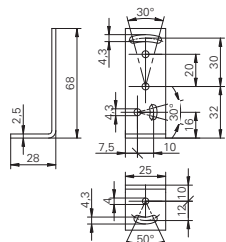
Mounting bracket for washdown sensors series 14



- Material: Stainless Steel
- For use with FxDR 14

order reference
11046278 Mounting bracket series 14 washdown

Mounting bracket for sensors series 15



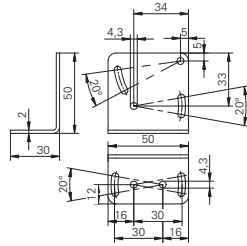
- Material: Steel
- For use with FxDM 15

order reference
10103415 Mounting bracket series 15 (L design)

Mounting accessories

Accessories

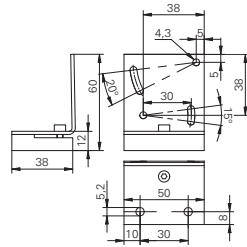
Mounting bracket for sensors series 16



- Material: Steel
- For use with FxDM 16, OxDM 16

order reference
10113917 Mounting bracket series 16 (L design)

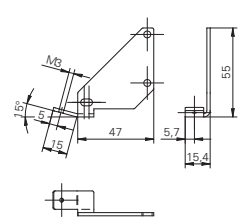
Feinjustagebefestigung Serie 16



- Material: Steel
- Simplifies the alignment of the laser sensors series OSDM 16 / OEDM 16

order reference
10119373 Mounting bracket for fine adjustment series 16

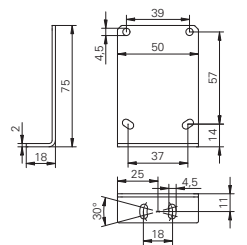
Lens cleaning air nozzle bracket



- Material: Steel
- For use with FxDM 16, OxDM 16

order reference
10116407 Lens cleaning air nozzle bracket

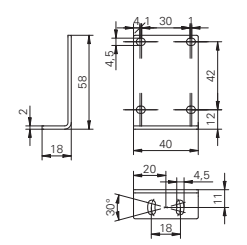
Mounting bracket for sensor OxDM 20



- Material: Steel
- For use with OADM 20, OADM 250

order reference
11010227 Mounting bracket OxDM 20

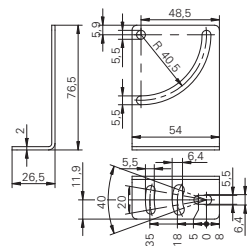
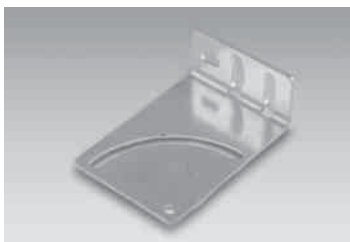
Mounting bracket for Logipal/PosCon



- Material: Steel
- For use with ZADM 023, FKDM 22

order reference
10126220 Mounting bracket series 22 L design

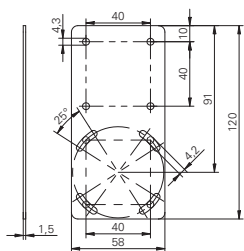
Mounting bracket for sensors series 26



- Material: Steel
- For use with FxDK 26

order reference
10112477 Mounting bracket series 26 (L design)

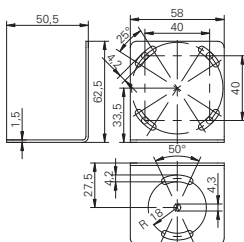
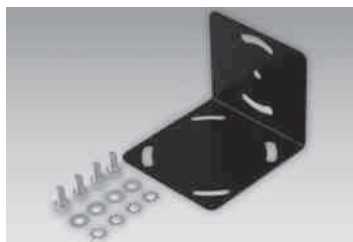
Mounting bracket for Verisens



- Material: Steel

order reference
10159905 Mounting bracket for Verisens

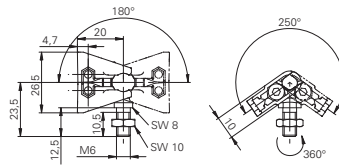
Mounting bracket for Verisens (L)



- Material: Steel

order reference
10159906 Mounting bracket for Verisens L design

Sensofix-Base module

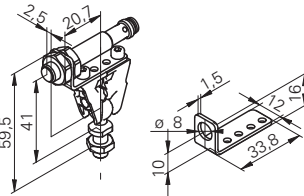


- Clamps made of stainless steel
- Ball pivots made of galvanized steel

order reference

10149010 Sensofix-Base module

Sensofix-Mounting kit for sensors series 08 round



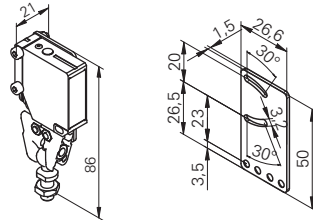
- Clamps made of stainless steel
- Ball pivots made of galvanized steel
- Mounting panel made of stainless steel

For use with all sensors in M8 housing

order reference

10151719 Sensofix series 08

Sensofix-Mounting kit for sensors series 12



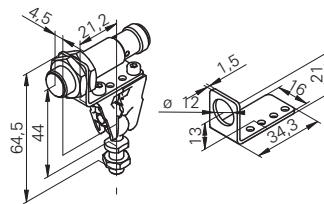
- Clamps made of stainless steel
- Ball pivots made of galvanized steel
- Mounting panel made of stainless steel

For use with FxDM 12, OxDM 12

order reference

10150328 Sensofix series 12

Sensofix-Mounting kit for sensors series 12 round



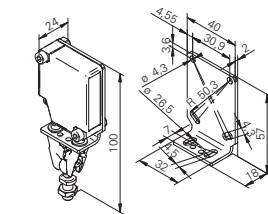
- Clamps made of stainless steel
- Ball pivots made of galvanized steel
- Mounting panel made of stainless steel

For use with all sensors in M12 housing

order reference

10151720 Sensofix series 12 round

Sensofix-Mounting kit for sensors series 13



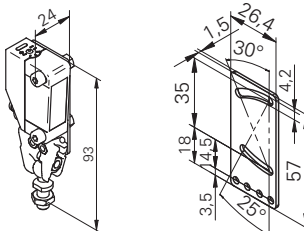
- Clamps made of stainless steel
- Ball pivots made of galvanized steel
- Mounting panel made of stainless steel

For use with OADM 13

order reference

10161829 Sensofix series 13

Sensofix-Mounting kit for sensors series 14



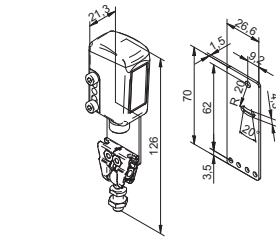
- Clamps made of stainless steel
- Ball pivots made of galvanized steel
- Mounting panel made of stainless steel

For use with FxDK 14, OxDK 14

order reference

10149011 Sensofix series 14

Sensofix-Mounting kit for washdown sensors series 14



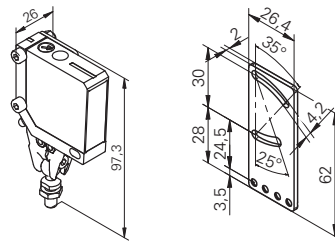
- Clamps made of stainless steel
- Ball pivots made of galvanized steel
- Mounting panel made of stainless steel

For use with FxDR 14

order reference

11046279 Sensofix series 14 washdown

Sensofix-Mounting kit for sensors series 16



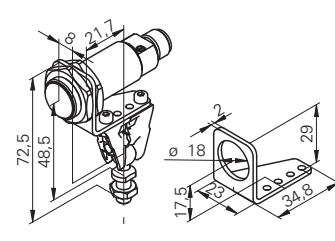
- Mounting panel made of stainless steel
- Clamps made of stainless steel
- Ball pivots made of galvanized steel

For use with FxDM 16, OxDM 16

order reference

10151721 Sensofix series 16

Sensofix-Mounting kit for sensors series 18 round



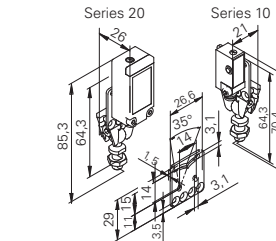
- Clamps made of stainless steel
- Ball pivots made of galvanized steel
- Mounting panel made of stainless steel

For use with all sensors in M18 housing

order reference

10151658 Sensofix series 18

Sensofix-Mounting kit for sensors series 10/20



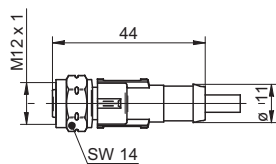
- Clamps made of stainless steel
- Ball pivots made of galvanized steel
- Mounting panel made of stainless steel

For use with photoelectric and ultrasonic sensors series 10, series 20

order reference

10150326 Sensofix series 10 / series 20

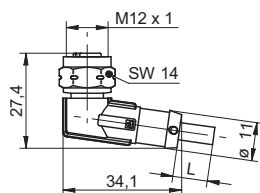
ESG 34F - Connector M12 straight, PVC/V4A



order reference	
ESG 34AF0200	Connector M12, 4 pin, straight, 2 m, V4A-PVC
ESG 34AF0500	Connector M12, 4 pin, straight, 5 m, V4A-PVC
ESG 34AF1000	Connector M12, 4 pin, straight, 10 m, V4A-PVC
ESG 34AF2500	Connector M12, 4 pin, straight, 25 m, V4A-PVC

- Connector unshielded
- 4 pin version
- Cable coating PVC
- Cap nut material in stainless steel V4A
- Ecolab certified and FDA conform
- UL listed, number E315836

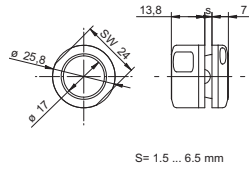
ESW 33F - Connector M12 angular, PVC/V4A



order reference	
ESW 33AF0200	Connector M12, 4 pin, angular, 2 m, V4A-PVC
ESW 33AF0500	Connector M12, 4 pin, angular, 5 m, V4A-PVC
ESW 33AF2500	Connector M12, 4 pin, angular, 25 m, V4A-PVC

- Connector unshielded
- 4 pin version
- Cable coating PVC
- Cap nut material in stainless steel V4A
- Ecolab certified and FDA conform
- UL listed, number E315836

Mounting HI17-1H for sensors in hygienic design Ø 17 mm



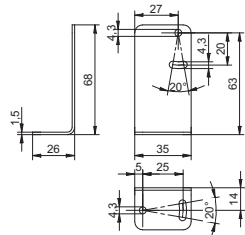
- Material: Stainless steel V4A
- EHEDG-certified

For use with inductive sensors 17 mm and photoelectric sensors in hygienic design

order reference

HI17-1H Mounting for sensors in hygienic design Ø 17 mm

Mounting bracket for washdown sensors series 14



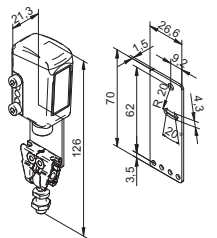
- Material: Stainless Steel

For use with FxDR 14

order reference

11046278 Mounting bracket series 14 washdown

Sensofix-Mounting kit for washdown sensors series 14



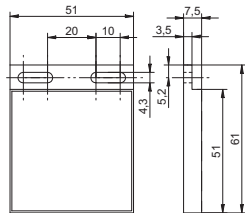
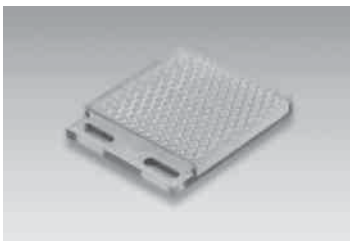
- Clamps made of stainless steel
- Ball pivots made of galvanized steel
- Mounting panel made of stainless steel

For use with FxDR 14

order reference

11046279 Sensofix series 14 washdown

FTDR 051

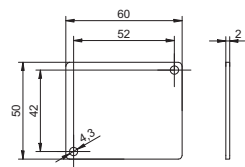


- Detergent resistant reflecteur
- Ecolab approved
- For Retro-reflective sensors

order reference

FTDR 051E051 Ecolab approved reflecteur

FTDR 050

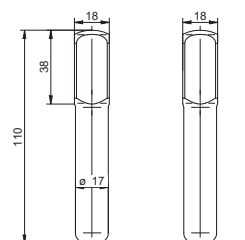


- Stainless steel reflector for SmartReflect in washdown design
- Material: Stainless steel V4A

order reference

FTDR 050R060 Stainless steel reflector for SmartReflect in washdown design

FTDR 017W



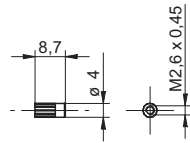
- Stainless steel reflector for SmartReflect in hygiene design
- EHEDG-certified

Accessorie: "mounting for sensors in hygienic design Ø17", order reference HI17-1H

order reference

FTDR 017W035 Stainless steel reflector for SmartReflect in hygiene design

Doubling lens M2,6



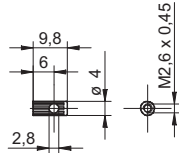
- Increases the actual range S_b by a factor of 6
- Contents: 2 pieces

For fiber optic: FSE 200C1Y00 / FSE 200C2Y00, FSA 200C1Y00, FSG 200C1Y00, FSE 200E1Y00

order reference

10134541 Doubling lens increases the actual range (paires)

Doubling lens M2,6 (side view version)



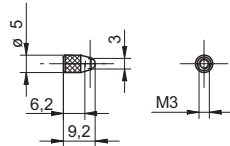
- Side view version
- Increases the actual range S_b by a factor of 6
- Contents: 2 pieces

For fiber optic: FSE 200C1Y00 / FSE 200C2Y00, FSA 200C1Y00, FSG 200C1Y00, FSE 200E1Y00

order reference

10134540 Doubling lens increases the actual range (paires)

Doubling lens M3



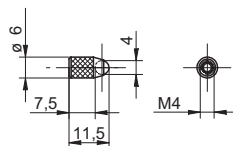
- Material: Ms / glass
- Increases the actual range S_b by a factor of 6
- Contents: 2 pieces

For fiber optic: FSE 200C1004

order reference

10119910 Doubling lens M3 increases the actual range (paires)

Doubling lens M4



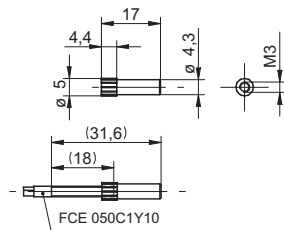
- Material: Ms / glass
- Increases the actual range S_b by a factor of 6
- Contents: 2 pieces

For fiber optic: FSE 200C1004

order reference

10119909 Doubling lens M4 increases the actual range (paires)

Focusing lens M3 Ø 0,1 mm



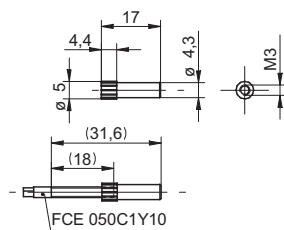
- Light spot \varnothing 0,1 mm at a distance of 4,6 mm

For fiber optic: FCE 050C1Y10 (empfohlen), FCE 200D1Y00, FCE 200D1Y01, FCE 200E1Y00

order reference

10134544 Focusing lens M3 Ø 0,1 mm

Focusing lens M3 Ø 0,4 mm



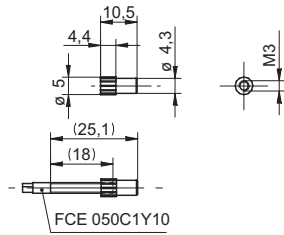
- Light spot \varnothing 0,4 mm at a distance of 7 mm

For fiber optic: FCE 050C1Y10 (empfohlen), FCE 200D1Y00, FCE 200D1Y01, FCE 200E1Y00

order reference

10134543 Focusing lens M3 Ø 0,4 mm

Focusing lens M3 Ø 2 mm



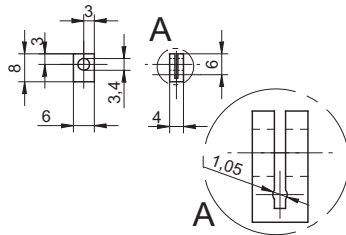
- Light spot Ø 2 mm at a distance of 19 mm

For fiber optic: FCE 050C1Y10 (empfohlen), FCE 200D1Y00, FCE 200D1Y01, FCE 200E1Y00

order reference

10134542 Focusing lens M3 Ø 2 mm (Paires)

Mounting bracket 1,1 mm



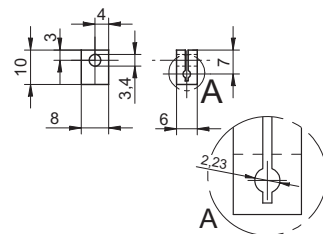
- Material: Aluminum

For fiber optic through beam type with 1,1 mm sheath diameters

order reference

10119912 Mounting bracket Ø 1,1 mm

Mounting bracket 2,2 mm



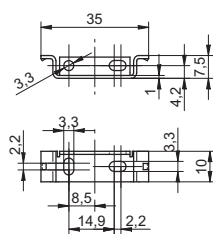
- Material: Aluminum

For fiber optic through beam type with 2,2 mm sheath diameters

order reference

10119911 Mounting bracket Ø 2,2 mm

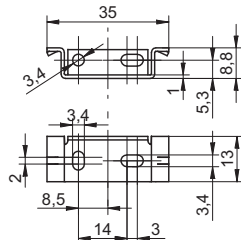
Fiber optic mounting bracket for sensing head M3



order reference

10134532 Fiber optic mounting bracket for sensing head M3

Mounting bracket for fiber optic sensors series 12



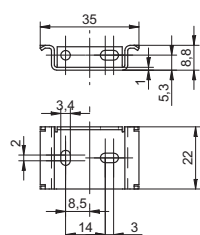
- Material: Steel
- Delivered with every plastic fiber optic sensor series 12

For use with FVDK 12

order reference

10145702 Mounting bracket for fiber optic sensors series 12

Mounting bracket for fiber optic sensors series 22



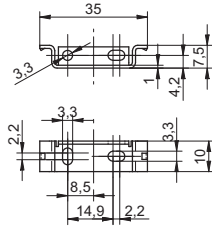
- Material: Steel
- Delivered with every plastic fiber optic sensor series 22

For use with FVDK 22

order reference

10125534 Mounting bracket for fiber optic sensors series 22

Mounting bracket for fiber optic sensors series 60

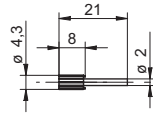


- Material: Steel
- Must be ordered separately for series 66 and series 67 sensors

For use with FVDK 66, FVDK 67

order reference	
10159806	Mounting bracket for fiber optic sensors series 60, 67, 69, 80

Reduction tube



- Set of 2
- Delivered with every 1 mm diameter plastic fiber optic

order reference	
10140260	Reduction tube

Fiber optic cable extension



- Reduction in range due to fiber optic extension: 2 m = approx. 25%
- Reduction in range due to fiber optic extension: 5 m = approx. 60%

order reference	
10145523	Fiber optic cable extension 5 m hochflexibel
10156738	Fiber optic cable extension 2 m
10158142	Fiber optic cable extension 5 m

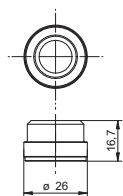
Cutting tool



- Delivered with every plastic fiber optic

order reference	
10114652	Cutting tool for plastic fiber optics

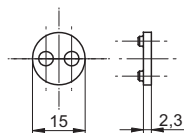
Adapter for photoelectric sensors series 30



- Material: POM
- For use with fiber optic amplifier FZAM 30

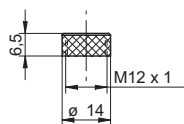
order reference	
10102757	Adapter series 30
10106042	Adapter series 30 (abgewinkelte Lichtleiter)

Adjusting plate for glass fiber optic sensors 18 (replace)



- Material: PETP
- For re-orders when lost
- Enclosed with every fiber optic type A

order reference	
10101958	Adjusting plate series 18

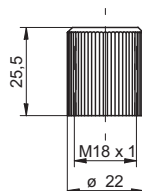
Cap nut for glass fiber optic sensors 15 (replace)

- Material: Nickel-plated brass
- For re-orders when lost
- Enclosed with every glass fiber optic of type B

For use with FVDM 15

order reference

10103230 Cap nut (Ersatz) for fiber optics series 15

Cap nut for glass fiber optic sensors 18 (replace)

- Material: POM
- For re-orders when lost
- Enclosed with every glass fiber optic of type A

For use with FZAM 18

order reference

10101480 Cap nut (Ersatz) for fiber optics series 18