

## SPECIFICATIONS:

**CONTACT RATING:** Refer to "Contact material Options" for more info.

**CONTACT RESISTANCE:** 10mΩmax. initial @ 2-4VDC  
100mA for both silver and gold plated contacts.

**ELECTRICAL LIFE:** 50,000 actuations at full load.

**INSULATION RESISTANCE:** 1,000M ΩMin.

**DIELECTRIC STRENGTHS:** 1,500V RMS @ sea level.

**OPERATION TEMPERATURE:** -30°C to + 85°C.

## MATERIALS:

**CASE:** Diallyl phthalate(DAP)(UL 94V-0).

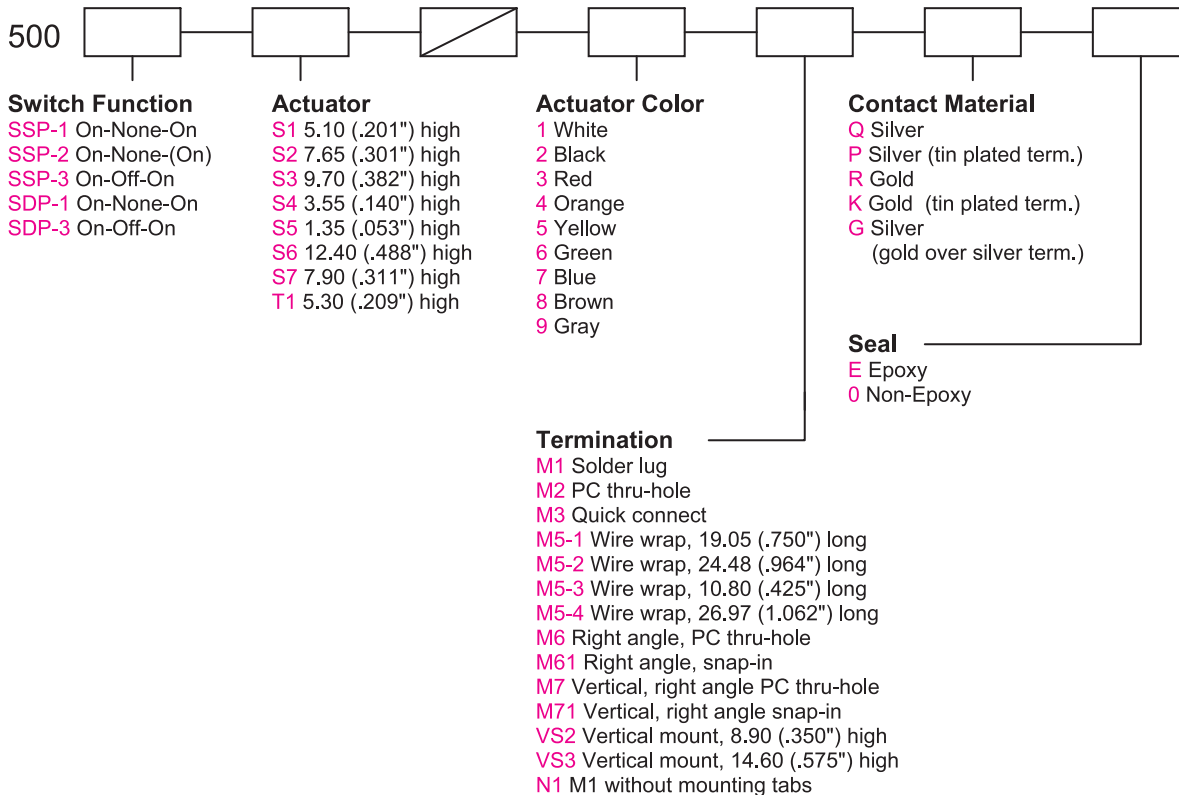
**HOUSING:** Stainless Steel.

**SLIDE HANDLE:** Nylon 6, black standard.

**TERMINAL SEAL:** Epoxy.

If your preferred product configuration is not shown, please contact our sales representative for custom design.

## HOW TO ORDER SYSTEM

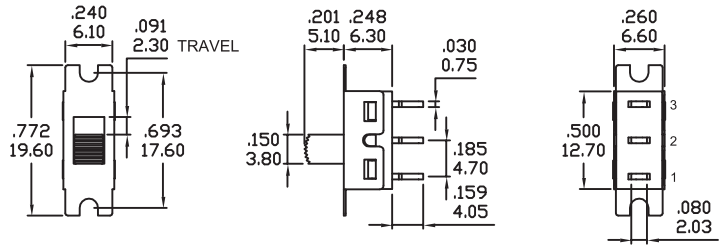


## SPDT



Model No.	Switching Position		
SSP-1	ON	NONE	ON
SSP-2	ON	NONE	(ON)
SSP-3	ON	OFF	ON
Term. Comm.	2-1	OPEN	2-3

Schematic

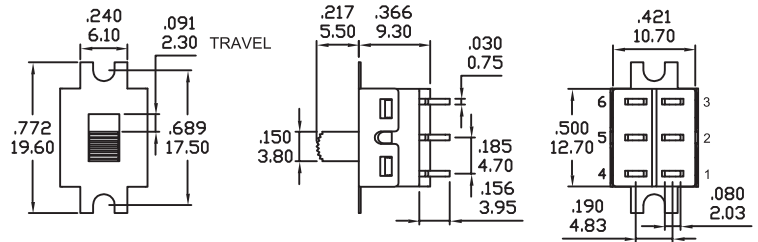
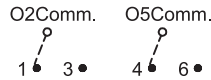


## DPDT



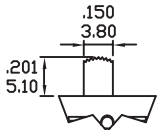
Model No.	Switching Position		
SDP-1	ON	NONE	ON
SDP-3	ON	OFF	ON
Term. Comm.	2-1 5-4	OPEN	2-3 5-6

Schematic



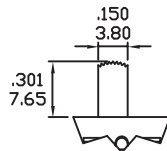
## ACTUATOR OPTIONS

### S1



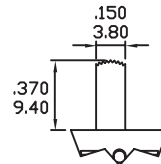
\* Add 0.40 (.016) from actuator height for DPDT-M1 and M2 model.

### S2



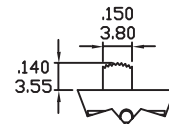
\* Add 0.20 (.008) from actuator height for DPDT-M1 and M2 model.

### S3



\* Add 0.30 (.012) from actuator height for DPDT-M1 and M2 model.

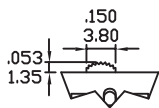
### S4



\* Add 0.40 (.016) from actuator height for DPDT-M1 and M2 model.

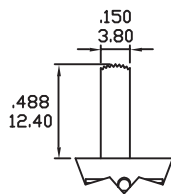
\* All actuator length shown is SPDT model with M1 and M2 terminals.

### S5 FOR DPDT ONLY

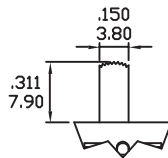


\* Add 0.70 (.028) from actuator height for DPDT-M1 and M2 model.

### S6

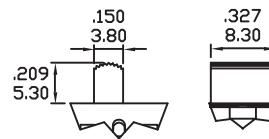


### S7



\* Add 0.40 (.016) from actuator height for DPDT model.

### T1 FOR DPDT ONLY

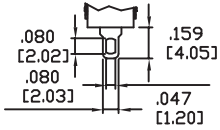


ACTUATOR COLORS	
1	White
2	Black(Std.)
3	Red
4	Orange
5	Yellow
6	Green
7	Blue
8	Brown
9	Gray

\* All actuator length shown is SPDT model with M1 and M2 terminals.

## TERMINATION OPTIONS

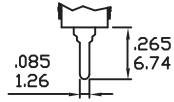
### M1 STD. SOLDER LUG



THK .030 (0.75)

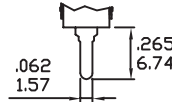
\* Standard with Mounting Tabs.

### M2 PC THRU-HOLE



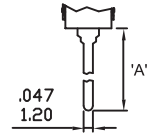
THK .030 (0.75)

### M3 QUICK CONNECT



THK .030 (0.75)

### M5 WIRE WRAP



THK .030 (0.75)

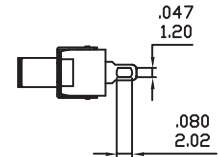
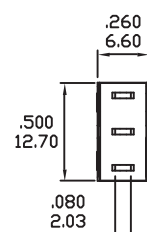
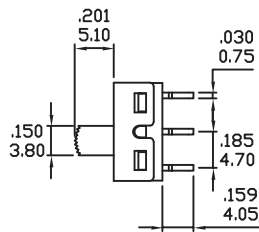
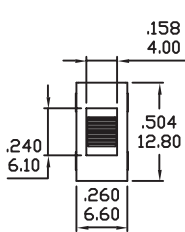
OPTION CODE	DIM.'A'
M5-1	.750(19.05)
M5-2	.964(24.48)
M5-3	.425(10.80)
M5-4	1.062(26.97)

## TERMINATION OPTIONS WITHOUT MOUNTING TABS

### N1



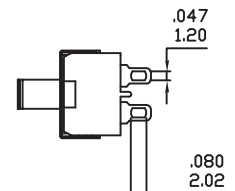
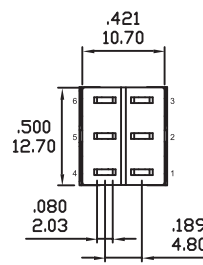
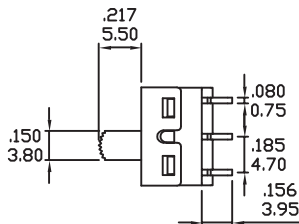
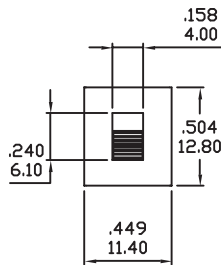
SPDT



### N1



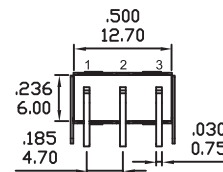
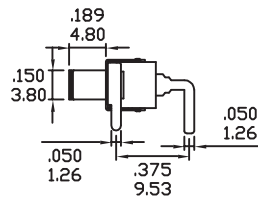
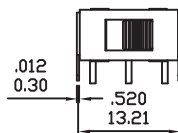
DPDT



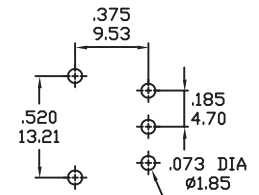
### M6



SPDT



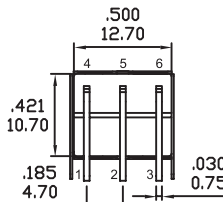
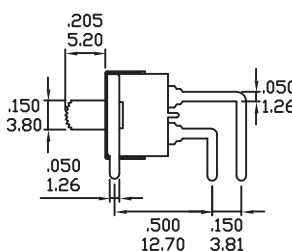
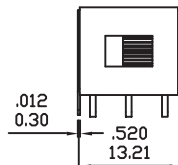
### P.C.MOUNTING



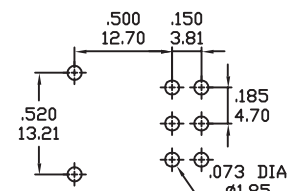
### M6



DPDT



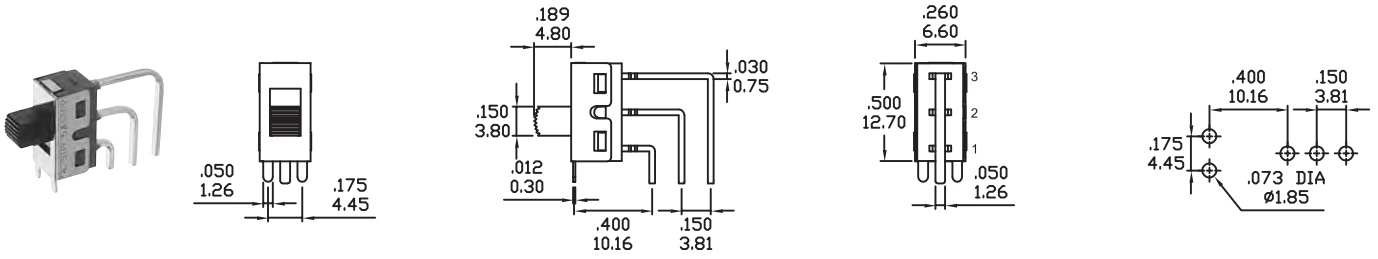
### P.C.MOUNTING



TERMINATION OPTIONS WITHOUT MOUNTING TABS

M7

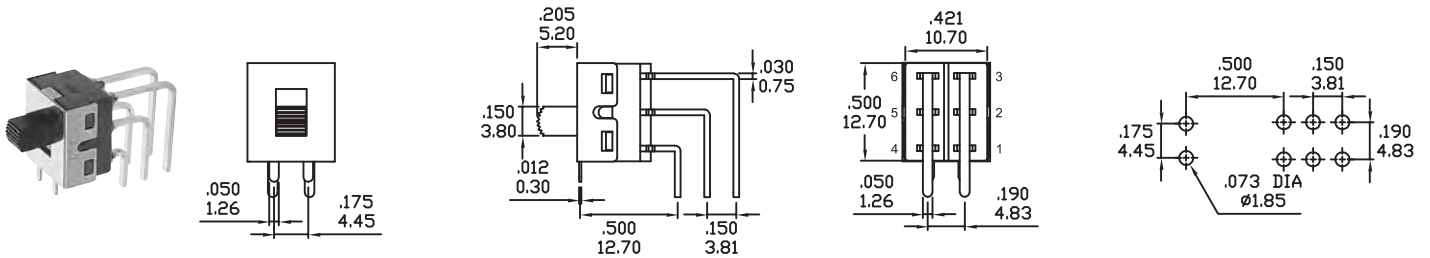
P.C.MOUNTING



SPDT

M7

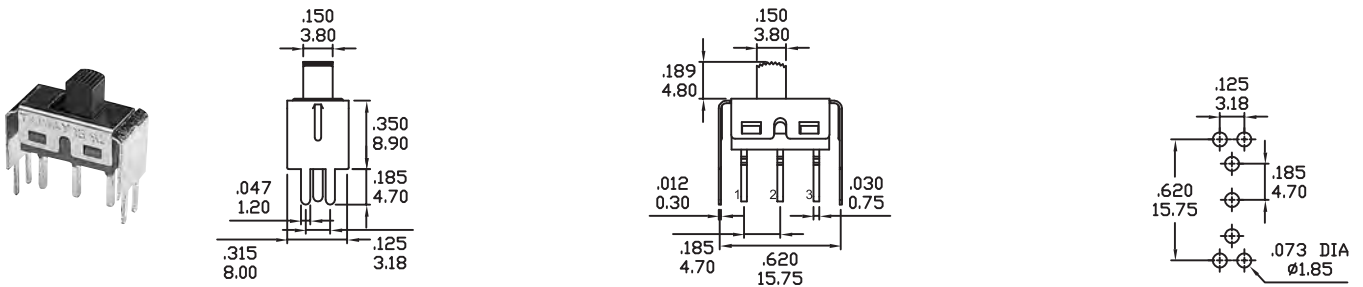
P.C.MOUNTING



DPDT

VS-2

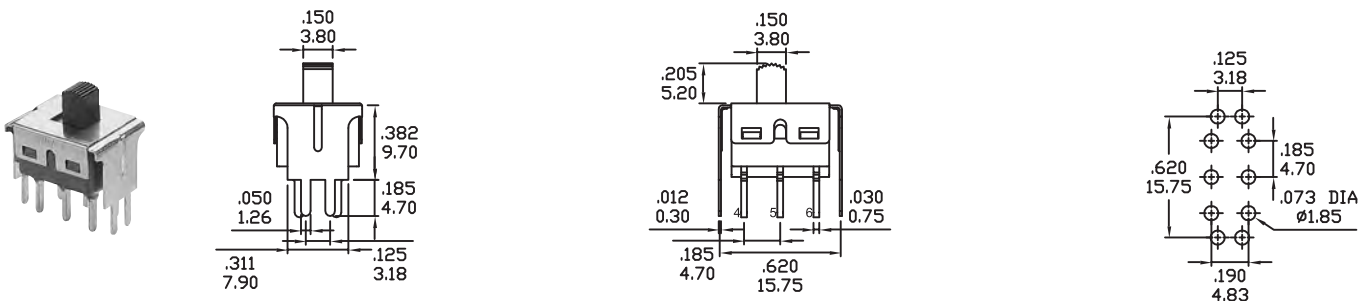
P.C.MOUNTING



SPDT

VS-2

P.C.MOUNTING



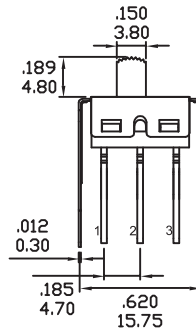
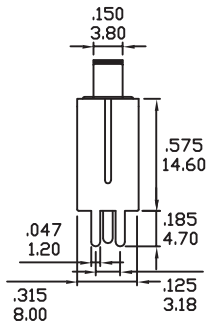
DPDT

## TERMINATION OPTIONS WITHOUT MOUNTING TABS

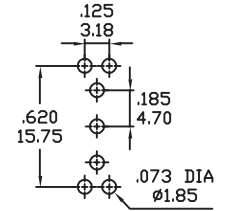
VS-3



SPDT



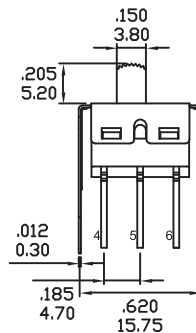
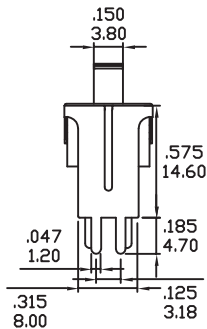
P.C.MOUNTING



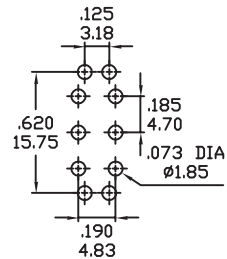
VS-3



DPDT



P.C.MOUNTING



## CONTACT MATERIAL OPTIONS

Coding	Contact Material	Terminal Plating	Rating	Agency Approvals
Q	Silver <sup>1</sup>	Silver plated <sup>1</sup>	5Amps @ 125VAC or 28VDC 2Amps @ 250VAC	
P		Tin plated <sup>5</sup> <sub>7</sub>		
R	Gold <sup>2</sup>	Gold plated <sup>4</sup>	0.4VA max @ 20V max (AC or DC)	
K		Tin plated <sup>5</sup> <sub>6</sub>		
G	Silver <sup>1</sup>	Gold over silver <sup>3</sup>	5Amps @ 125VAC or 28VDC 2Amps @ 250VAC	

1. Movable Contact / Terminals: Copper alloy, silver plated.
2. Movable Contact: Copper alloy with gold plated over nickel plated.
3. Terminals: Silver plated with outer layer in gold plating.
4. Terminals: Copper alloy, with gold plated over nickel plated.
5. Outer Terminals: Copper alloy with pure tin plated.
6. Terminal Contact: Gold plated over nickel plated.
7. Terminal Contact: Palladium nickel alloy (or Silver) plated.

\* P, K is not available with M1 and M3 terminals

\* 6Amps (Movable Contact: coin silver, silver plated) available with model ON-NONE-ON without UL approval