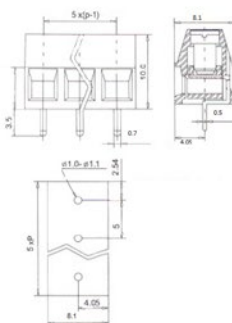


PCB Terminal Blocks

5 mm Pitch, Low Profile



Low profile

2-12 pole double Interlocking mechanism for increased strength

4-12 pole solid block and end stackable

Captive screw

Withstand Voltage - AC1500V/1min

Screw/Torque - M2.5 Steel, Nickel Plated 0.4Nm

Recommended PCB hole size ϕ 1.4 mm

SPECIFICATION:

Pitch	5 mm
Termination type	Clamp Terminals/Screw Connection
Connection direction	horizontal
Rated current to EN	10 A
Rated current to UL	10 A
Rated voltage to EN	300 V
Rated voltage to UL	300 V
Connection cross-section	0.33-3.3 mm ² (22-12AWG)
Colour	green
Temperature range	-33...+120 °C
Width	8.45 mm
Height	10 mm
Material	PA 66, UL94-V0

PRODUCT RANGE:

Art. Nr.	Poles	Length
RND 205-00045	2	10 mm
RND 205-00046	3	15 mm
RND 205-00047	4	20 mm
RND 205-00048	5	25 mm
RND 205-00049	6	30 mm
RND 205-00050	7	35 mm
RND 205-00051	8	40 mm
RND 205-00052	9	45 mm
RND 205-00053	10	50 mm
RND 205-00054	11	55 mm
RND 205-00055	12	60 mm