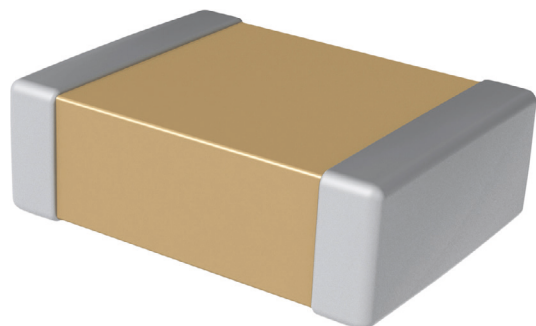


Multilayer Capacitors, SMD



Capacitor, 0402



FEATURES:

Automotive Capacitors

With lead-free termination (pure Tin)

Meets AEC-Q200 requirements

SPECIFICATION:

Construction form	0402
Ceramic type	NPO
Capacitance tolerance	±1%
Dimensions L x H x W	1 x 0.5 x 0.5 mm
Temperature range	-55...+125 °C
Height	0.5 mm
Length	1 mm
Width	0.5 mm

PRODUCT RANGE:

Art. Nr.	Capacitance	Rated voltage
RND150MT15N100F100	10 pF	10 VDC
RND150MT15N100F160	10 pF	16 VDC
RND150MT15N100F250	10 pF	25 VDC
RND150MT15N100F500	10 pF	50 VDC
RND150MT15N150F160	15 pF	16 VDC
RND150MT15N150F500	15 pF	50 VDC
RND150MT15N220F100	22 pF	10 VDC
RND150MT15N220F160	22 pF	16 VDC
RND150MT15N220F250	22 pF	25 VDC
RND150MT15N220F500	22 pF	50 VDC
RND150MT15N330F100	33 pF	10 VDC
RND150MT15N330F250	33 pF	25 VDC
RND150MT15N330F500	33 pF	50 VDC
RND150MT15N470F100	47 pF	10 VDC
RND150MT15N470F250	47 pF	25 VDC
RND150MT15N470F500	47 pF	50 VDC
RND150MT15N680F500	68 pF	50 VDC
RND150MT15N101F100	100 pF	10 VDC
RND150MT15N101F160	100 pF	16 VDC
RND150MT15N101F250	100 pF	25 VDC
RND150MT15N101F500	100 pF	50 VDC