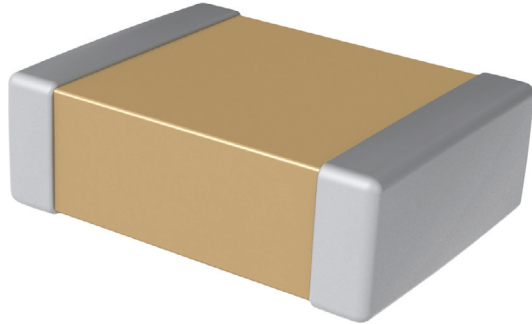


# Multilayer Capacitors, SMD



## Capacitor



### SPECIFICATION:

Ceramic type	X7R
Temperature range	-55...+125 °C

### PRODUCT RANGE:

Art. Nr.	Capacitance	Rated voltage	Construction form	Capacitance tolerance	Dimensions L x H x W	Height	Length	Width
	150 pF	1000 VDC	1206	±10%	3.2 x 1.25 x 1.6 mm	1.25 mm	3.2 mm	1.6 mm
	150 pF	2000 VDC	1206	±10%	3.2 x 1.25 x 1.6 mm	1.25 mm	3.2 mm	1.6 mm
	220 pF	50 VDC	1206	±10%	3.2 x 1.25 x 1.6 mm	1.25 mm	3.2 mm	1.6 mm
	220 pF	630 VDC	1206	±10%	3.2 x 1.25 x 1.6 mm	1.25 mm	3.2 mm	1.6 mm
	220 pF	1000 VDC	1206	±10%	3.2 x 1.25 x 1.6 mm	1.25 mm	3.2 mm	1.6 mm
	220 pF	2000 VDC	1206	±10%	3.2 x 1.25 x 1.6 mm	1.25 mm	3.2 mm	1.6 mm
	330 pF	50 VDC	1206	±10%	3.2 x 1.25 x 1.6 mm	1.25 mm	3.2 mm	1.6 mm
	330 pF	200 VDC	1206	±10%	3.2 x 1.25 x 1.6 mm	1.25 mm	3.2 mm	1.6 mm
	390 pF	50 VDC	1206	±10%	3.2 x 1.25 x 1.6 mm	1.25 mm	3.2 mm	1.6 mm
	470 pF	50 VDC	1206	±10%	3.2 x 1.25 x 1.6 mm	1.25 mm	3.2 mm	1.6 mm
	470 pF	200 VDC	1206	±10%	3.2 x 1.25 x 1.6 mm	1.25 mm	3.2 mm	1.6 mm
	470 pF	630 VDC	1206	±10%	3.2 x 1.25 x 1.6 mm	1.25 mm	3.2 mm	1.6 mm
	470 pF	1000 VDC	1206	±10%	3.2 x 1.25 x 1.6 mm	1.25 mm	3.2 mm	1.6 mm
	470 pF	2000 VDC	1206	±10%	3.2 x 1.25 x 1.6 mm	1.25 mm	3.2 mm	1.6 mm
	560 pF	50 VDC	1206	±10%	3.2 x 1.25 x 1.6 mm	1.25 mm	3.2 mm	1.6 mm
	680 pF	50 VDC	1206	±10%	3.2 x 1.25 x 1.6 mm	1.25 mm	3.2 mm	1.6 mm
	680 pF	630 VDC	1206	±10%	3.2 x 1.25 x 1.6 mm	1.25 mm	3.2 mm	1.6 mm
	680 pF	1000 VDC	1206	±10%	3.2 x 1.25 x 1.6 mm	1.25 mm	3.2 mm	1.6 mm
	680 pF	2000 VDC	1206	±10%	3.2 x 1.25 x 1.6 mm	1.25 mm	3.2 mm	1.6 mm
	1 nF	50 VDC	1206	±10%	3.2 x 1.25 x 1.6 mm	1.25 mm	3.2 mm	1.6 mm
	1 nF	100 VDC	1206	±10%	3.2 x 1.25 x 1.6 mm	1.25 mm	3.2 mm	1.6 mm
	1 nF	200 VDC	1206	±10%	3.2 x 1.25 x 1.6 mm	1.25 mm	3.2 mm	1.6 mm
	1 nF	500 VDC	1206	±10%	3.2 x 1.25 x 1.6 mm	1.25 mm	3.2 mm	1.6 mm
	1 nF	630 VDC	1206	±10%	3.2 x 1.25 x 1.6 mm	1.25 mm	3.2 mm	1.6 mm
	1 nF	1000 VDC	1206	±10%	3.2 x 1.25 x 1.6 mm	1.25 mm	3.2 mm	1.6 mm
	1 nF	2000 VDC	1206	±10%	3.2 x 1.6 x 1.6 mm	1.6 mm	3.2 mm	1.6 mm
	1.5 nF	50 VDC	1206	±10%	3.2 x 1.25 x 1.6 mm	1.25 mm	3.2 mm	1.6 mm
	1.8 nF	50 VDC	1206	±10%	3.2 x 1.25 x 1.6 mm	1.25 mm	3.2 mm	1.6 mm
	2.2 nF	10 VDC	1206	±10%	3.2 x 1.25 x 1.6 mm	1.25 mm	3.2 mm	1.6 mm
	2.2 nF	30 VDC	1206	±10%	3.2 x 1.25 x 1.6 mm	1.25 mm	3.2 mm	1.6 mm
	2.2 nF	100 VDC	1206	±10%	3.2 x 1.25 x 1.6 mm	1.25 mm	3.2 mm	1.6 mm
	2.2 nF	1000 VDC	1206	±10%	3.2 x 1.25 x 1.6 mm	1.25 mm	3.2 mm	1.6 mm
	2.2 nF	2000 VDC	1206	±10%	3.2 x 1.25 x 1.6 mm	1.25 mm	3.2 mm	1.6 mm
	2.7 nF	50 VDC	1206	±10%	3.2 x 1.25 x 1.6 mm	1.25 mm	3.2 mm	1.6 mm

Art. Nr.	Capacitance	Rated voltage	Construction form	Capacitance tolerance	Dimensions L x H x W	Height	Length	Width
	3.3 nF	100 VDC	1206	±10%	3.2 x 1.25 x 1.6 mm	1.25 mm	3.2 mm	1.6 mm
	3.3 nF	630 VDC	1206	±10%	3.2 x 1.25 x 1.6 mm	1.25 mm	3.2 mm	1.6 mm
	4.7 nF	50 VDC	1206	±10%	3.2 x 1.25 x 1.6 mm	1.25 mm	3.2 mm	1.6 mm
	4.7 nF	100 VDC	1206	±10%	3.2 x 1.25 x 1.6 mm	1.25 mm	3.2 mm	1.6 mm
	4.7 nF	500 VDC	1206	±10%	3.2 x 1.25 x 1.6 mm	1.25 mm	3.2 mm	1.6 mm
	4.7 nF	630 VDC	1206	±10%	3.2 x 1.25 x 1.6 mm	1.25 mm	3.2 mm	1.6 mm
	4.7 nF	1000 VDC	1206	±10%	3.2 x 1.25 x 1.6 mm	1.25 mm	3.2 mm	1.6 mm
	6.8 nF	50 VDC	1206	±10%	3.2 x 1.25 x 1.6 mm	1.25 mm	3.2 mm	1.6 mm
	10 nF	50 VDC	1206	±10%	3.2 x 1.25 x 1.6 mm	1.25 mm	3.2 mm	1.6 mm
	10 nF	100 VDC	1206	±5%	3.2 x 1.25 x 1.6 mm	1.25 mm	3.2 mm	1.6 mm
	10 nF	100 VDC	1206	±10%	3.2 x 1.25 x 1.6 mm	1.25 mm	3.2 mm	1.6 mm
	10 nF	200 VDC	1206	±10%	3.2 x 1.25 x 1.6 mm	1.25 mm	3.2 mm	1.6 mm
	10 nF	500 VDC	1206	±10%	3.2 x 1.25 x 1.6 mm	1.25 mm	3.2 mm	1.6 mm
	10 nF	630 VDC	1206	±10%	3.2 x 1.25 x 1.6 mm	1.25 mm	3.2 mm	1.6 mm
	10 nF	1000 VDC	1206	±10%	3.2 x 1.25 x 1.6 mm	1.25 mm	3.2 mm	1.6 mm
	12 nF	50 VDC	1206	±10%	3.2 x 1.25 x 1.6 mm	1.25 mm	3.2 mm	1.6 mm
	15 nF	50 VDC	1206	±10%	3.2 x 0.95 x 1.6 mm	0.95 mm	3.2 mm	1.6 mm
	18 nF	50 VDC	1206	±10%	3.2 x 0.95 x 1.6 mm	0.95 mm	3.2 mm	1.6 mm
	22 nF	50 VDC	1206	±10%	3.2 x 0.95 x 1.6 mm	0.95 mm	3.2 mm	1.6 mm
	22 nF	100 VDC	1206	±10%	3.2 x 1.6 x 1.6 mm	1.6 mm	3.2 mm	1.6 mm
	22 nF	200 VDC	1206	±10%	3.2 x 1.25 x 1.6 mm	1.25 mm	3.2 mm	1.6 mm
	22 nF	630 VDC	1206	±10%	3.2 x 1.6 x 1.6 mm	1.6 mm	3.2 mm	1.6 mm
	27 nF	50 VDC	1206	±10%	3.2 x 1.25 x 1.6 mm	1.25 mm	3.2 mm	1.6 mm
	33 nF	50 VDC	1206	±10%	3.2 x 1.25 x 1.6 mm	1.25 mm	3.2 mm	1.6 mm
	33 nF	100 VDC	1206	±10%	3.2 x 1.6 x 1.6 mm	1.6 mm	3.2 mm	1.6 mm
	33 nF	630 VDC	1206	±10%	3.2 x 1.6 x 1.6 mm	1.6 mm	3.2 mm	1.6 mm
	39 nF	50 VDC	1206	±10%	3.2 x 1.6 x 1.6 mm	1.6 mm	3.2 mm	1.6 mm
	47 nF	50 VDC	1206	±10%	3.2 x 1.6 x 1.6 mm	1.6 mm	3.2 mm	1.6 mm
	47 nF	100 VDC	1206	±10%	3.2 x 1.6 x 1.6 mm	1.6 mm	3.2 mm	1.6 mm
	47 nF	200 VDC	1206	±10%	3.2 x 1.6 x 1.6 mm	1.6 mm	3.2 mm	1.6 mm
	68 nF	50 VDC	1206	±10%	3.2 x 1.6 x 1.6 mm	1.6 mm	3.2 mm	1.6 mm
	100 nF	16 VDC	1206	±10%	3.2 x 1.15 x 1.6 mm	1.15 mm	3.2 mm	1.6 mm
	100 nF	50 VDC	1206	±5%	3.2 x 1.6 x 1.6 mm	1.6 mm	3.2 mm	1.6 mm
	100 nF	50 VDC	1206	±10%	3.2 x 0.8 x 1.6 mm	0.8 mm	3.2 mm	1.6 mm
	100 nF	100 VDC	1206	±5%	3.2 x 1.6 x 1.6 mm	1.6 mm	3.2 mm	1.6 mm
	100 nF	100 VDC	1206	±10%	3.2 x 1.6 x 1.6 mm	1.6 mm	3.2 mm	1.6 mm
	100 nF	200 VDC	1206	±10%	3.2 x 1.6 x 1.6 mm	1.6 mm	3.2 mm	1.6 mm
	220 nF	16 VDC	1206	±10%	3.2 x 0.95 x 1.6 mm	0.95 mm	3.2 mm	1.6 mm
	220 nF	25 VDC	1206	±10%	3.2 x 0.95 x 1.6 mm	0.95 mm	3.2 mm	1.6 mm
	220 nF	50 VDC	1206	±5%	3.2 x 0.8 x 1.6 mm	0.8 mm	3.2 mm	1.6 mm
	220 nF	50 VDC	1206	±10%	3.2 x 0.95 x 1.6 mm	0.95 mm	3.2 mm	1.6 mm
	220 nF	100 VDC	1206	±10%	3.2 x 1.6 x 1.6 mm	1.6 mm	3.2 mm	1.6 mm
	270 nF	25 VDC	1206	±10%	3.2 x 0.95 x 1.6 mm	0.95 mm	3.2 mm	1.6 mm
	330 nF	16 VDC	1206	±10%	3.2 x 0.95 x 1.6 mm	0.95 mm	3.2 mm	1.6 mm
	330 nF	25 VDC	1206	±10%	3.2 x 0.95 x 1.6 mm	0.95 mm	3.2 mm	1.6 mm
	330 nF	50 VDC	1206	±10%	3.2 x 1.25 x 1.6 mm	1.25 mm	3.2 mm	1.6 mm
	390 nF	25 VDC	1206	±10%	3.2 x 1.15 x 1.6 mm	1.15 mm	3.2 mm	1.6 mm
	470 nF	16 VDC	1206	±10%	3.2 x 1.15 x 1.6 mm	1.15 mm	3.2 mm	1.6 mm
	470 nF	25 VDC	1206	±10%	3.2 x 1.15 x 1.6 mm	1.15 mm	3.2 mm	1.6 mm
	470 nF	50 VDC	1206	±5%	3.2 x 1.6 x 1.6 mm	1.6 mm	3.2 mm	1.6 mm
	470 nF	50 VDC	1206	±10%	3.2 x 1.6 x 1.6 mm	1.6 mm	3.2 mm	1.6 mm
	560 nF	25 VDC	1206	±10%	3.2 x 1.15 x 1.6 mm	1.15 mm	3.2 mm	1.6 mm
	680 nF	16 VDC	1206	±10%	3.2 x 1.15 x 1.6 mm	1.15 mm	3.2 mm	1.6 mm
	680 nF	25 VDC	1206	±10%	3.2 x 1.15 x 1.6 mm	1.15 mm	3.2 mm	1.6 mm
	1 µF	16 VDC	1206	±10%	3.2 x 1.15 x 1.6 mm	1.15 mm	3.2 mm	1.6 mm
	1 µF	25 VDC	1206	±10%	3.2 x 1.15 x 1.6 mm	1.15 mm	3.2 mm	1.6 mm
	1 µF	50 VDC	1206	±5%	3.2 x 1.6 x 1.6 mm	1.6 mm	3.2 mm	1.6 mm
	1 µF	50 VDC	1206	±10%	3.2 x 1.6 x 1.6 mm	1.6 mm	3.2 mm	1.6 mm

Art. Nr.	Capacitance	Rated voltage	Construction form	Capacitance tolerance	Dimensions L x H x W	Height	Length	Width
	1.5 $\mu$ F	16 VDC	1206	$\pm 10\%$	3.2 x 1.15 x 1.6 mm	1.15 mm	3.2 mm	1.6 mm
	2.2 $\mu$ F	10 VDC	1206	$\pm 10\%$	3.2 x 1.15 x 1.6 mm	1.15 mm	3.2 mm	1.6 mm
	2.2 $\mu$ F	16 VDC	1206	$\pm 10\%$	3.2 x 1.15 x 1.6 mm	1.15 mm	3.2 mm	1.6 mm
	2.2 $\mu$ F	25 VDC	1206	$\pm 10\%$	3.2 x 1.6 x 1.6 mm	1.6 mm	3.2 mm	1.6 mm
	4.7 $\mu$ F	25 VDC	1206	$\pm 10\%$	3.2 x 1.6 x 1.6 mm	1.6 mm	3.2 mm	1.6 mm
	4.7 $\mu$ F	50 VDC	1206	$\pm 10\%$	3.2 x 1.6 x 1.6 mm	1.6 mm	3.2 mm	1.6 mm
	10 $\mu$ F	16 VDC	1206	$\pm 10\%$	3.2 x 1.6 x 1.6 mm	1.6 mm	3.2 mm	1.6 mm