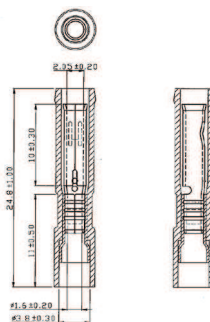


# Circular connector

## Circular Connector Sleeves, Insulated, RND



### FEATURES:

Double crimp with copper sleeve on barrel

### SPECIFICATION:

Material	Brass
Surface material	Tin-plated

### PRODUCT RANGE:

Art. Nr.	Cross-section	Colour	Diameter	Insulation material	Voltage	Thickness	Temperature range
RND 465-00001	0.5...0.75 mm <sup>2</sup>	transparent	2.05 mm	Nylon	600 V	0.3 mm	max. +105 °C
RND 465-00092	0.5...1.5 mm <sup>2</sup>	red	3.9 mm	Nylon	600 V	0.4 mm	max. +105 °C
RND 465-00093	1.5...2.5 mm <sup>2</sup>	blue	3.9 mm	Nylon	600 V	0.4 mm	max. +105 °C
RND 465-00094	1.5...2.5 mm <sup>2</sup>	blue	4.9 mm	Nylon	600 V	0.4 mm	max. +105 °C
RND 465-00095	4...6 mm <sup>2</sup>	yellow	4.9 mm	Vinyl	600 V	0.45 mm	max. +75 °C