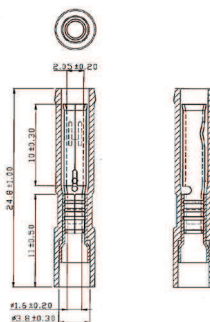


Circular connector

Circular Connector Sleeves, Insulated, RND



FEATURES:

Double crimp with copper sleeve on barrel

SPECIFICATION:

Material	Brass
Surface material	Tin-plated

PRODUCT RANGE:

Art. Nr.	Cross-section	Colour	Diameter	Insulation material	Voltage	Thickness	Temperature range
RND 465-00001	0.5...0.75 mm ²	transparent	2.05 mm	Nylon	600 V	0.3 mm	max. +105 °C
RND 465-00092	0.5...1.5 mm ²	red	3.9 mm	Nylon	600 V	0.4 mm	max. +105 °C
RND 465-00093	1.5...2.5 mm ²	blue	3.9 mm	Nylon	600 V	0.4 mm	max. +105 °C
RND 465-00094	1.5...2.5 mm ²	blue	4.9 mm	Nylon	600 V	0.4 mm	max. +105 °C
RND 465-00095	4...6 mm ²	yellow	4.9 mm	Vinyl	600 V	0.45 mm	max. +75 °C