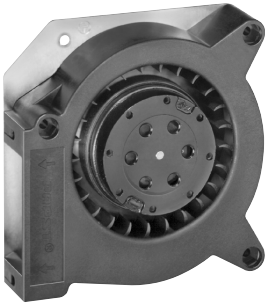


RL 90-18/00

AC centrifugal compact fan

single inlet



ebm-papst St. Georgen GmbH & Co. KG

Hermann-Papst-Straße 1

D-78112 St. Georgen

Phone +49 7724 81-0

Fax +49 7724 81-1309

info2@de.ebmpapst.com

www.ebmpapst.com

Nominal data

Type	RL 90-18/00	
Phase		1~
Nominal voltage	VAC	115
Frequency	Hz	60
Speed	min ⁻¹	2550
Power input	W	19.5
Min. ambient temperature	°C	-10
Max. ambient temperature	°C	60
Air flow	m ³ /h	42
Sound power level	B	6.0

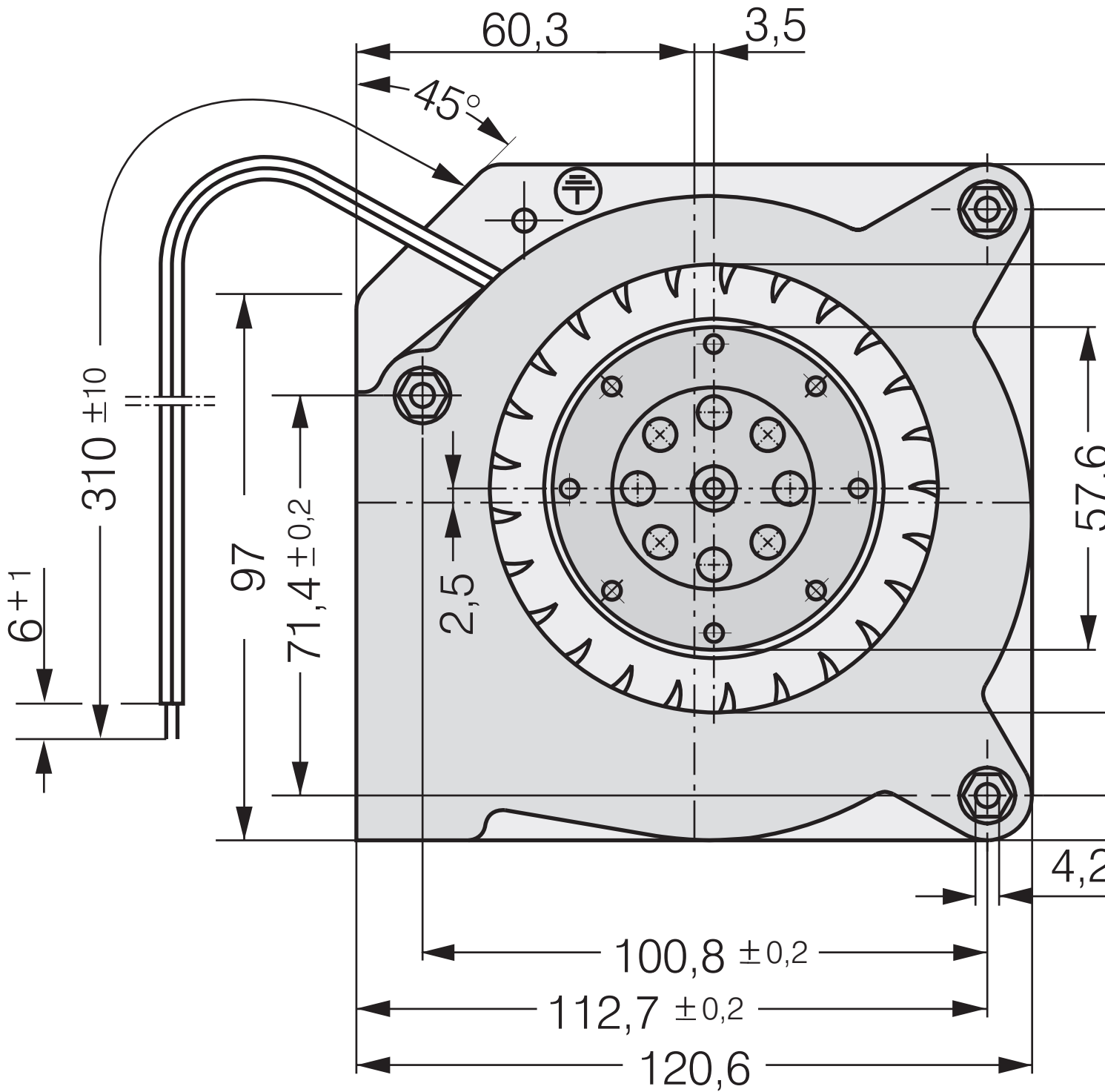
ml = max. load · me = max. efficiency · rfa = running at free air · cs = customer specs · cu = customer unit
Subject to alterations



Technical features

Dimensions	121 x 121 x 37 mm
General description	<p>AC voltage fan with external rotor motor shaded-pole motor. Protected from overload by impedance protection.</p> <p>Scroll housing and impeller made of fibreglass-reinforced plastic. Housing base of galvanized sheet steel. Housing base with flat plug 6.3 x 0.8 mm for protective earth</p> <p>Centrifugal direction of air flow, air outlet from the housing window. Rotational direction clockwise looking at rotor.</p> <p>Electrical connection to 2 single strands. Strand ends bared and tin-plated.</p> <p>Mass 680 g.</p>
Connection line	2 single strands AWG 18, TR 32
Direction of rotation	Right, looking at rotor
Direction of air flow	Centrifugal, air exhaust out of housing window
Bearing	Sintec sleeve bearing system
Lifetime L10 at 40 °C	37500 h
Lifetime L10 at maximum temperature	25000 h
Mass	0.680 kg
Housing material	Spiral housing of fibreglass-reinforced plastic, housing base of galvanized sheet steel.
Material of impeller	Fibreglass-reinforced plastic
Motor protection	Protected from overload using impedance protection
Approval	VDE, CSA, UL, CE

Product drawing



*Federmutter M4 oder 8-32UNC. Ein Speed nut M4 or 8-32UNC. Screw-i

Charts: Air flow

