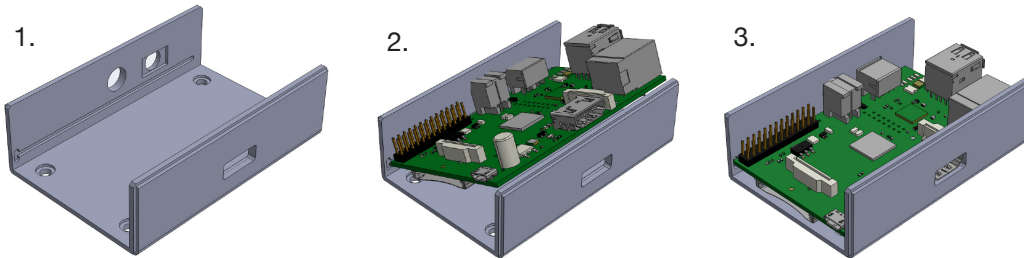


RASPBERRY PI STYLE ENCLOSURES

Fitting of the PCB, Light Pipe and Enclosure Assembly

PCB Assembly

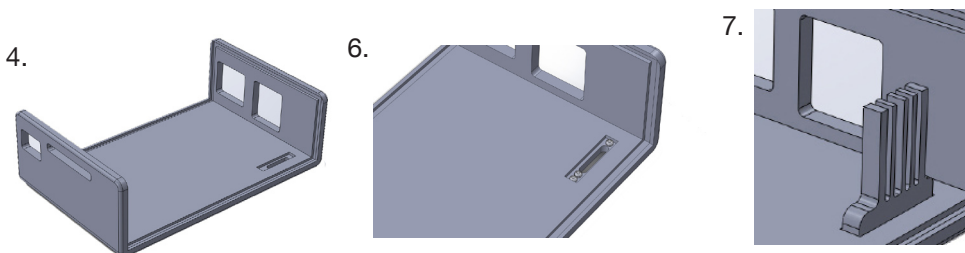
1. Place your Raspberry Pi enclosure base onto a steady surface.
2. Tilting your Raspberry Pi at 45° angle, align the audio and RCA video ports with the machined holes in the base and push until the PCB clips into the PCB groove.
3. Push the opposite side of the PCB down so that it clips into the second PCB groove in the base.



Light Pipe Assembly

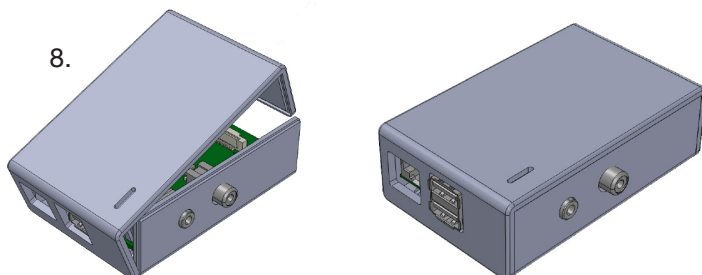
(If you are not fitting the Light pipe skip to step 8, if you are fitting the Light pipe, continue to step 4)

4. Place your Raspberry Pi top onto a steady surface.
5. Peel off the protective film on the light pipe.
6. Apply one drop of glue onto the smaller end of the recess and two drops of glue onto the other end of the light pipe location recess. (We recommend using Everbuild Stick 2 All Purpose Superglue)
7. Ensuring that the light pipe is in the correct orientation as shown, place into the recess and hold for five seconds ensuring that the light pipe is perpendicular to the enclosure top.



Enclosure Assembly

8. Hold the base in one hand (Thumb on the audio connector, fingers over the HDMI connector) Place the top cover at a 45° angle (Aligning USB connector with USB cut-out) clip over the USB and LAN connectors. Then clip the opposite end of the top onto the base.
9. Peel off the protective film on both the top and base of your enclosure. Push the supplied feet into place if required.



UNIVERSAL
ENCLOSURES

HAND
HELD
CASES

HEAVY
DUTY
ENCLOSURES

DIN
RAIL
BOXES

INTERFACE
SUPPORTS

CONTROL
STATIONS

DIECAST
& METAL
BOXES

DESKTOP &
INSTRUMENT
CASES

POTTING
BOXES

19"
ENCLOSURES

19"
SUBRACKS

CUSTOM
SIZED
ENCLOSURES

CUSTOM
SERVICES



+44 (0)1638 716101
info@camdenboss.com
www.camdenboss.com

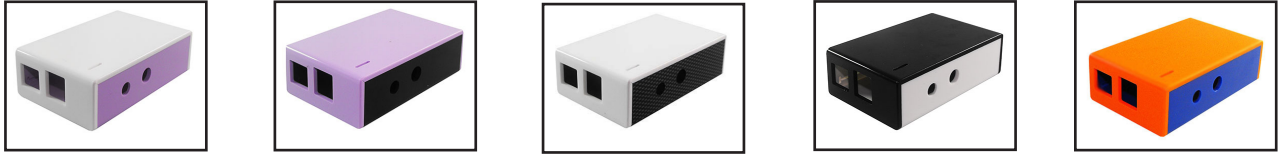
We operate a constant improvement policy,
our products are subject to change without notice.

Ver 1.0 Iss 1

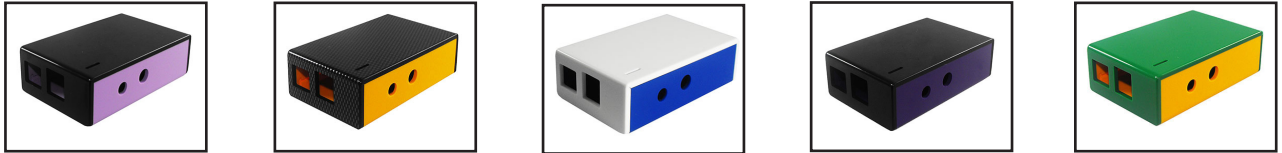
CAMDENBOSS
ELECTRONICS & ENCLOSURES

RASPBERRY PI STYLE ENCLOSURES

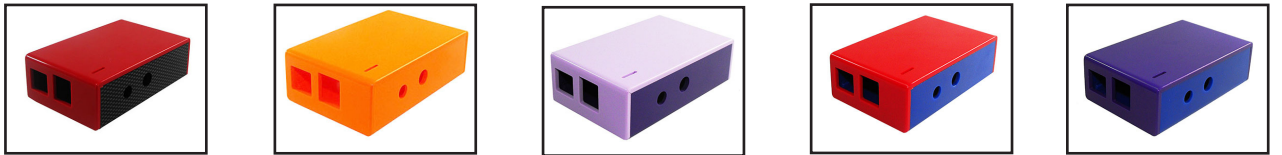
UNIVERSAL ENCLOSURES



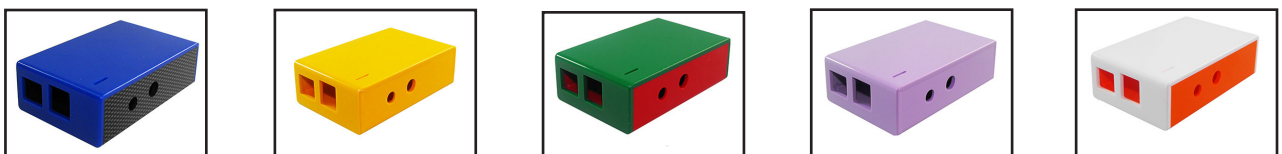
HAND HELD CASES



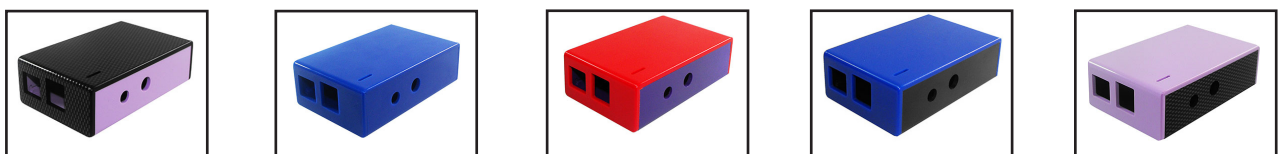
HEAVY DUTY ENCLOSURES



DIN RAIL BOXES



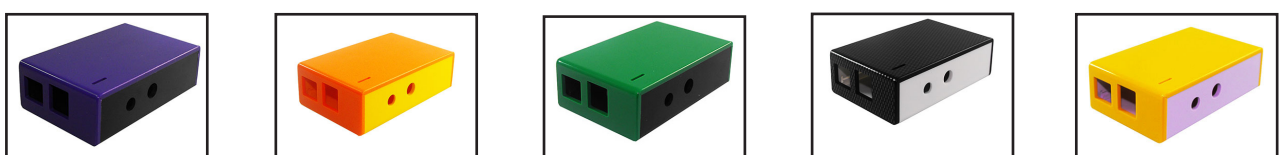
INTERFACE SUPPORTS



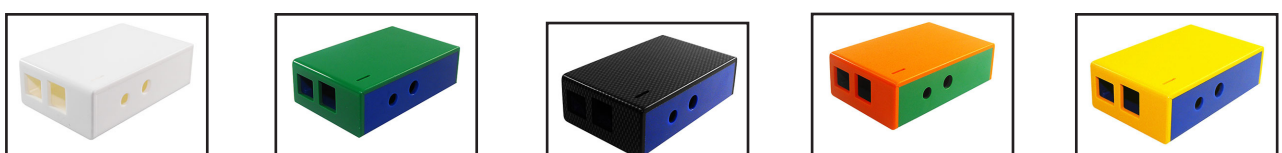
CONTROL STATIONS



DIECAST & METAL BOXES

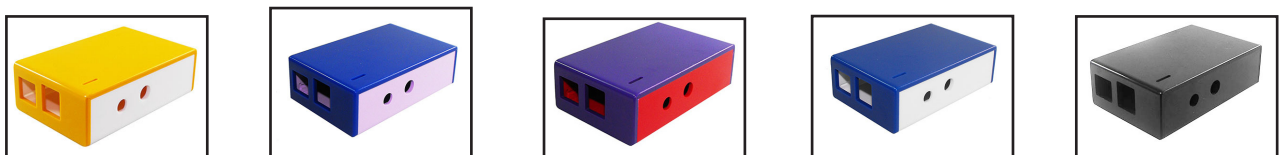


DESKTOP & INSTRUMENT CASES

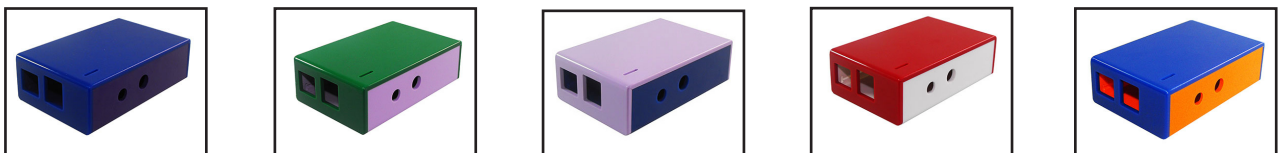


POTTING BOXES

19" ENCLOSURES



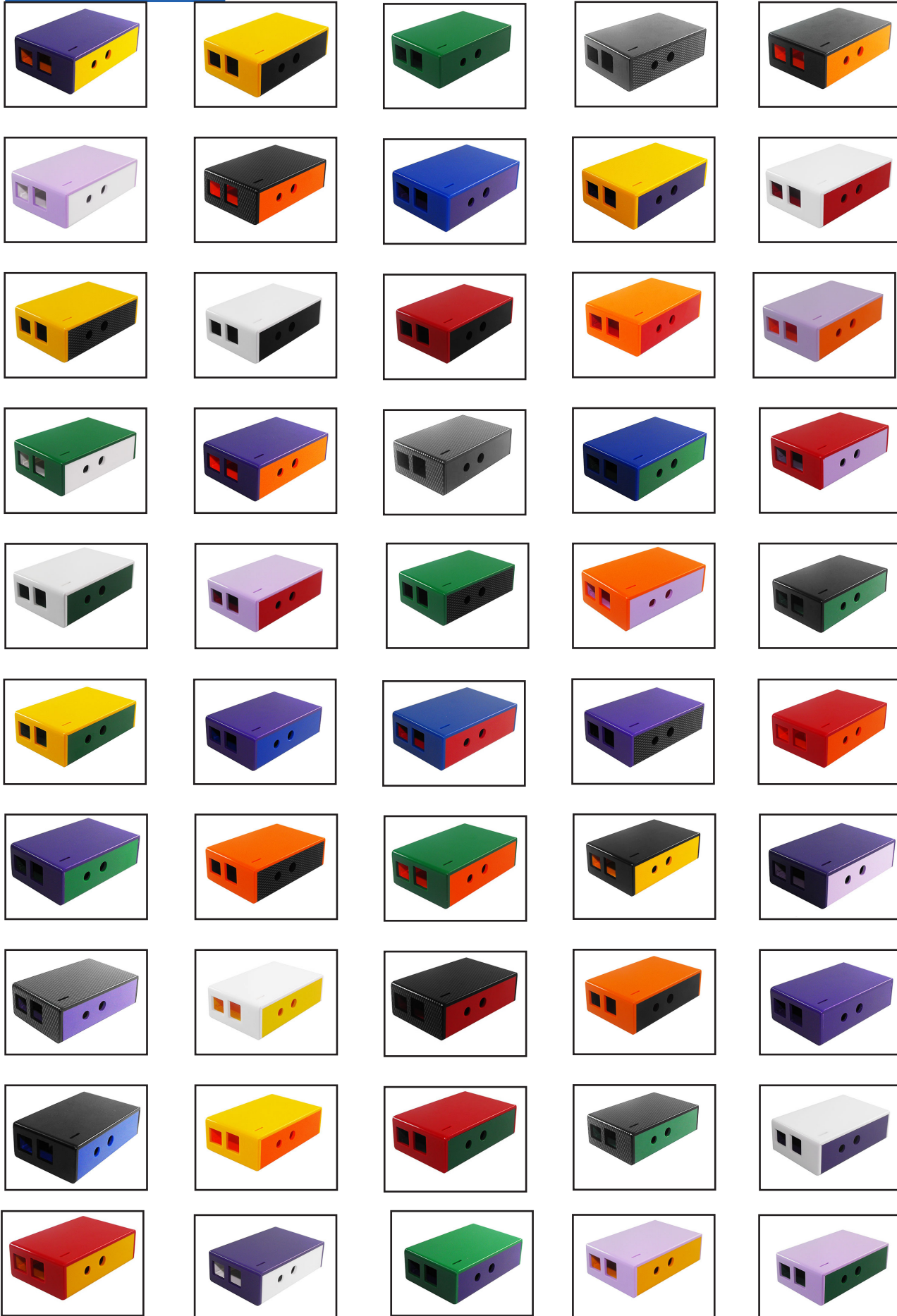
19" SUBRACKS



CUSTOM SIZED ENCLOSURES

CUSTOM SERVICES

RASPBERRY PI STYLE ENCLOSURES



UNIVERSAL ENCLOSURES

HAND HELD CASES

HEAVY DUTY ENCLOSURES

DIN RAIL BOXES

INTERFACE SUPPORTS

CONTROL STATIONS

DIECAST & METAL BOXES

DESKTOP & INSTRUMENT CASES

POTTING BOXES

19" ENCLOSURES

19" SUBRACKS

CUSTOM SIZED ENCLOSURES

CUSTOM SERVICES



+44 (0)1638 716101
 info@camdenboss.com
 www.camdenboss.com

We operate a constant improvement policy, our products are subject to change without notice.

Ver 1.0

CAMDENBOSS
 ELECTRONICS & ENCLOSURES