

Quick Installation Guide



TE100-PCIFC
1.01

Table of Contents

Español	1
1. Antes de iniciar	1
2. Cómo se instala	2
Troubleshooting	5

1. Antes de iniciar



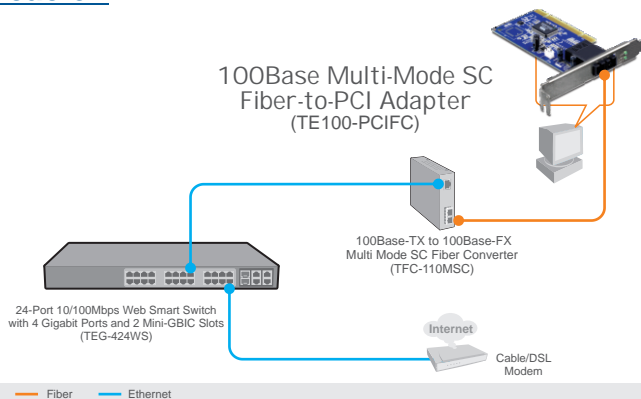
Contenidos del paquete

- TE100-PCIFC
- CD-ROM del controlador
- Guía de instalación rápida multilingüe

Requisitos del sistema

- Ranura PCI 2.2 de 32 bits
- Unidad de CD-ROM
- CPU: 300 MHz o superior/ 800 MHz o superior (Windows Vista)
- Memoria: 256MB de RAM o más/ 512MB de RAM o más (Windows Vista)
- Windows 98SE/ME/2000/2003 Server(32/64-bit) / XP(32/64-bit) / Vista (32/64-bit)
- Un cable de fibra multimodo de 62.5/125 μm
- Convertidor de fibra recomendado: TFC-110MSC o TFC-210MSC
- Conmutador Gigabit recomendado: TEG-424WS

Aplicación



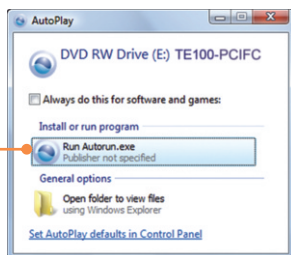
2. Cómo se instala

Nota:

1. Para la instalación del controlador de Windows 98SE y ME, consulte la guía del usuario en el CD-ROM del controlador
2. No conecte el TE100-PCIFC a su PC a menos que se le indique.

1. Inserte el CD-ROM del controlador en su unidad de CD-ROM.

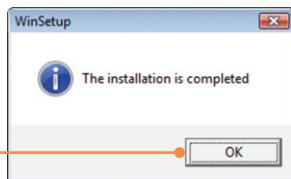
2. Haga clic en Run Autorun.exe (sólo para Windows Vista).



3. Haga clic en Install Driver (Instalar controlador) y luego haga clic en su sistema operativo.



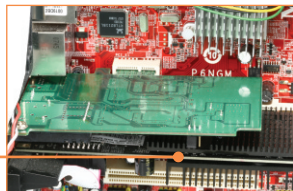
4. Haga clic en OK.



5. Apague su PC y luego abra la caja de su PC.



6. Introduzca la tarjeta PCIe de manera firme en la ranura para tarjeta PCIe disponible, después ENCIENDA el PC y espere hasta que aparezca el escritorio de Windows.



7. Los controladores se instalarán automáticamente.

Cómo conectar el TE100-PCIFC a su red

1. Conecte un cable multimodo tipo SC del TE100-PCIFC al convertidor de fibra a 10/100Mbps (Ej. TFC-110MSC)

Nota: Compruebe que los cables TX y RX están invertidos en la conexión opuesta.

2. Conecte un cable Ethernet del convertidor de fibra a un puerto Gigabit Ethernet en su conmutador (Ej. TEG-424WS).



La instalación ha sido completada

Si desea más información sobre la configuración del TE100-PCIFC y sus configuraciones avanzadas, por favor consulte la Guía del usuario del el CD-ROM de la Guía del usuario.

Registre su producto

Para asegurar los más altos niveles de servicio y apoyo al cliente, registre su producto en línea en: www.trendnet.com/register

Gracias por elegir TRENDnet

Q1: I inserted the Driver CD-ROM into my computer's CD-ROM drive and the installation menu does not appear automatically. What should I do?

A1: For Windows 2000/XP/2003 Server, if the installation menu does not appear automatically, click Start, click Run, and type D:\autorun where "D" in "D:\autorun.exe" is the letter assigned to your CD-ROM Drive, and then press the ENTER key on your keyboard. For Windows Vista, if the installation menu does not appear automatically, click Start, click the Start Search box, and type D:\autorun.exe where "D" in "D:\autorun.exe" is the letter assigned to your CD-ROM Drive, and then press the ENTER key on your keyboard.

Q2: Windows doesn't recognize my new hardware. What should I do?

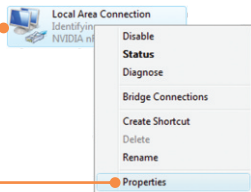
A2: First, verify that your computer meets the system requirements as specified in Section 1. Second, access your device manager to make sure the adapter is installed properly. If you see a networking device with a yellow question mark or exclamation point, you will need to reinstall the device and/or the drivers. To access the device manager on Windows 2000/XP, right-click My Computer, click Properties, click the Hardware tab, and then click Device Manager. To access the device manager on Windows Vista, right-click Computer, click Properties and then click Device Manager. Third, if the device manager fails to recognize the presence of a new networking adapter, verify that the network adapter is firmly seated in the PCI slot. Fourth, plug the adapter into another PCI slot on your computer.

Q3: Windows recognizes my new hardware, but I'm unable to connect to my network. What should I do?

A3: First, verify that the cable is securely connected from your switch or router to your network adapter. Second, verify that the LEDs on your network card are lit. Third, verify that the TCP/IP settings are set to Obtain an IP address automatically (see the steps below).

Windows Vista

1. Go into the Control Panel, click Network and Internet, click Network and Sharing Center, click Manage Network connections and then right-click the Local Area Connection icon and then click Properties.



2. Click Internet Protocol Version 4(TCP/IPv4) and then click Properties. Then click on Obtain an IP address automatically.

Windows XP/2000

1. Go into the Control Panel, double-click the Network Connections icon and then right-click the Local Area Connection icon and then click Properties.



2. Click Internet Protocol (TCP/IP) and then click Properties. Then click on Obtain an IP address automatically.

Q4: I am not getting a network connection when I connect the TE100-PCIFC to my network. What should I do?

A4: First, check the fiber cable. Make sure you are using 62.5/125 μ m multi-mode fiber cable. Second, make sure the TX and RX cables are reversed on the opposing connection.

Q5: What is the maximum distance that is supported by the adapter?

A5: 2 kilometers.

If you still encounter problems or have any questions regarding the TE100-PCIFC, please refer to the User's Guide included on the Driver CD-ROM or contact TRENDnet's Technical Support Department.

Certifications

This equipment has been tested and found to comply with FCC and CE Rules.

Operation is subject to the following two conditions:

- (1) This device may not cause harmful interference.
- (2) This device must accept any interference received. Including interference that may cause undesired operation.



Waste electrical and electronic products must not be disposed of with household waste. Please recycle where facilities exist. Check with you Local Authority or Retailer for recycling advice.



NOTE: THE MANUFACTURER IS NOT RESPONSIBLE FOR ANY RADIO OR TV INTERFERENCE CAUSED BY UNAUTHORIZED MODIFICATIONS TO THIS EQUIPMENT. SUCH MODIFICATIONS COULD VOID THE USER'S AUTHORITY TO OPERATE THE EQUIPMENT.

ADVERTENCIA

En todos nuestros equipos se mencionan claramente las características del adaptador de alimentación necesario para su funcionamiento. El uso de un adaptador distinto al mencionado puede producir daños físicos y/o daños al equipo conectado. El adaptador de alimentación debe operar con voltaje y frecuencia de la energía eléctrica domiciliar existente en el país o zona de instalación.



TRENDnet®

Product Warranty Registration

Please take a moment to register your product online.
Go to TRENDnet's website at <http://www.trendnet.com/register>

TRENDnet®

20675 Manhattan Place
Torrance, CA 90501
USA