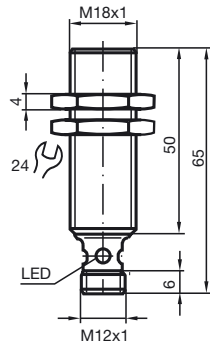
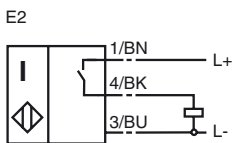


Reduction factor = 1
 5 mm embeddable
 Resistant to welding



General specifications	
Switching element function	PNP Make function
Rated operating distance s_n	5 mm
Installation	embeddable
Assured operating distance s_a	0 ... 4.05 mm
Reduction factor r_{Al}	1
Reduction factor r_{Cu}	1
Reduction factor r_{V2A}	1
Reduction factor r_{St37}	1
Nominal ratings	
Operating voltage U_B	10 ... 30 V
Switching frequency f	0 ... 350 Hz
Reverse polarity protection	Protected against reverse polarity
Short-circuit protection	pulsing
Voltage drop U_d	≤ 3 V
Design data	
Rated insulation voltage U_{BIS}	60 V
Operating current I_L	0 ... 200 mA
Off-state current I_r	0 ... 0.5 mA typ. 0.1 μ A at 25 °C
No-load supply current I_0	≤ 15 mA
Constant magnetic field B	200 mT
Alternating magnetic field B	200 mT
Indication of the switching state	Multihole-LED, yellow
Standard conformity	
Standards	IEC / EN 60947-5-2:2004
Ambient conditions	
Ambient temperature	-25 ... 70 °C (248 ... 343 K)
Mechanical specifications	
Connection type	V1-connector
Housing material	brass, teflon coated
Sensing face	PPS
Protection degree	IP67
Protection class	II

Connection type:



2005-11-10 - 187799_ENG.xml